

Shuttle Valves

SV 06

Load Shuttle Valve

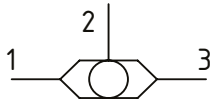
350 bar [5000 psi] • 48 l/min [12.7 US gpm]



DESCRIPTION AND OPERATION

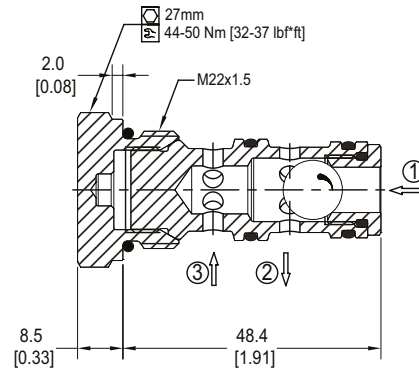
This valve senses the higher of two input pressures at 1 and 3, and routes it to the output 2.

SCHEMATIC



DIMENSIONS

mm [in]



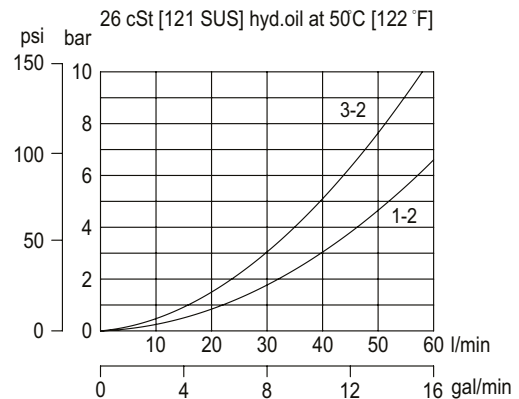
PERFORMANCE DATA

Rated pressure*	350 bar [5000 psi]
Rated flow at 7 bar [100psi]	48 l/min [12.7 US gpm]
Leakage	6 drops/min @ Rated pressure
Weight	0.11 kg [0.24 lb]
Cavity	NCS06/3

*Rated pressure based on NFPA fatigue test standard [at 1 million cycles]

PERFORMANCE CURVES

Pressure drop



MODEL CODE

SV06 - 00 - V

Housing

Code	Ports & Material	Housing Model Code
00	No Housing	No Housing
SE3/8	AL, 3/8 BSP	NCS06/3-SE3/8
SE1/2	AL, 1/2 BSP	NCS06/3-SE1/2
SE6S	AL, #6 SAE	NCS06/3-SE-6S
SE8S	AL, #8 SAE	NCS06/3-SE-8S

* Aluminum bodies are to be used for pressures less than 210 bar [3000 psi].

* Additional housings available

Seal Option

Code Seal kit

B-Omit 230000070

V-Viton 230000110