

Shuttle Valves

VS 06

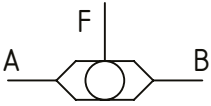
Load Shuttle Valve, Line Mounted, 1/4 BSP
350 bar [5000 psi] • 35 l/min [9 US gpm]



DESCRIPTION AND OPERATION

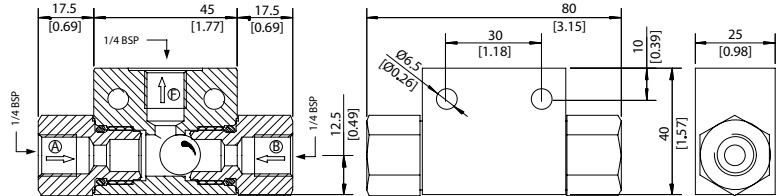
This valve senses the higher of the two input pressures and routes it to the output port.

SCHEMATIC



DIMENSIONS

mm [in]

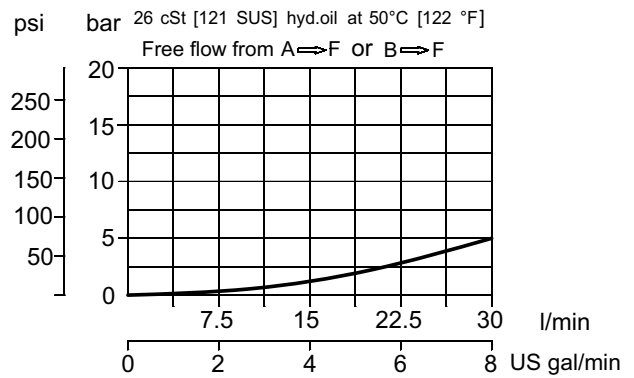


PERFORMANCE DATA

Rated pressure	350 bar [5000 psi]
Rated flow at 7 bar [100psi]	35 l/min [9 US gpm]
Leakage	6 drops/min @ Rated pressure
Weight	0.22 kg [0.49 lb]

PERFORMANCE CURVES

Pressure drop



MODEL CODE

VS06 - G - V

Seal Option

Omit-Buna-N

V-Viton