

# Shuttle Valves

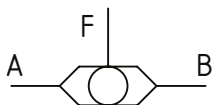
## VS 10

Load Shuttle Valve, Line Mounted, 3/8 BSP  
**350 bar [5000 psi] • 45 l/min [12 US gpm]**

### DESCRIPTION AND OPERATION

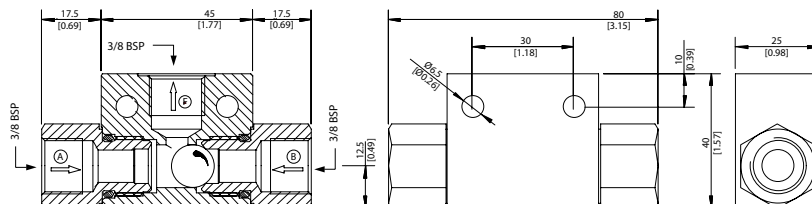
This valve senses the higher of two input pressures and routes it to the output port.

### SCHEMATIC



### DIMENSIONS

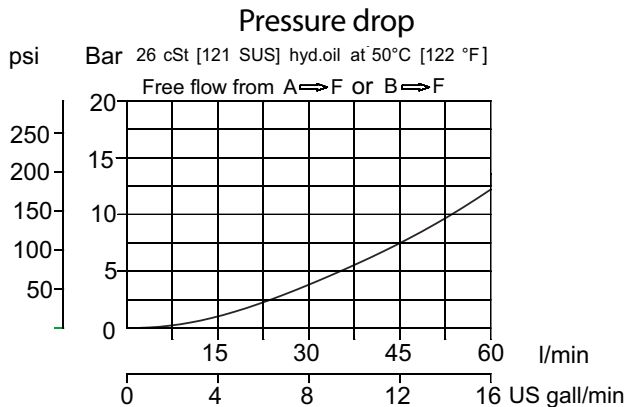
mm [in]



### PERFORMANCE DATA

<b>Rated pressure</b>	<b>350 bar [5000 psi]</b>
<b>Rated flow at 7 bar [100psi]</b>	<b>45 l/min [12 US gpm]</b>
<b>Leakage</b>	6 drops/min @ Rated pressure
<b>Weight</b>	0.19 kg [0.42 lb]

### PERFORMANCE CURVES



### MODEL CODE

**VS 10 - G - V**

**Seal Option**  
 Omit-Buna-N  
 V-Viton