

# Solenoid Valves

## S207

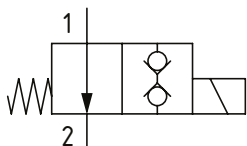
Solenoid Valve, 2-way, Poppet Type, Normally Open, Direct Acting, Double Blocking

350 bar [5000 psi] • 1 l/min [0.25 US gpm]

### OPERATION AND DESCRIPTION

This is a 2-way, 2-position, poppet type, direct acting, normally open, bi-directional solenoid valve for low flow applications. When energized, flow can take place from port 2 to 1 and from 1 to 2. In its energized condition, flow is blocked in both directions. Leakage in either direction is kept to a minimum due to the poppet design. These valves can be used to hold loads in position, provide controlled lowering or as a pilot valve for larger valves such as ventable relief valves or logic elements.

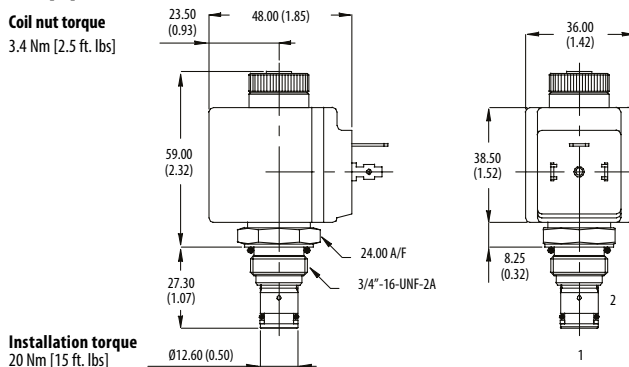
### SCHEMATIC



### DIMENSIONS

mm [in]

Coil nut torque  
3.4 Nm [2.5 ft. lbs]



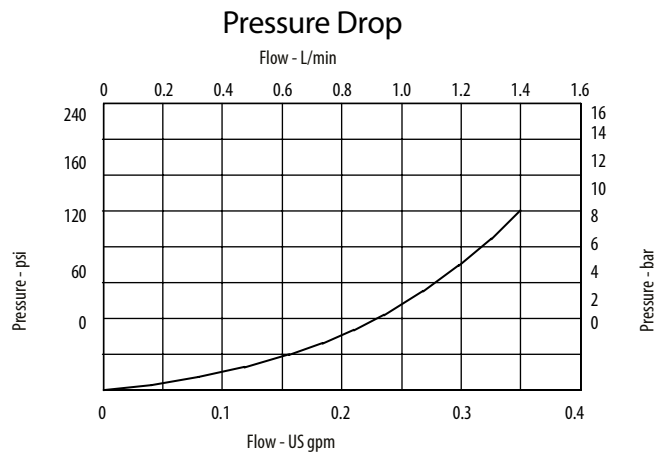
Installation torque  
20 Nm [15 ft. lbs]

### PERFORMANCE DATA

Rated Pressure*	350 bar [5000 psi]
Rated flow	1 l/min [0.25 US gpm]
Leakage	0.3 drops/min [5 dpm] @ 210 bar [3000 psi]
Coil Options	C13
Weight	0.1 kg [0.2 lb]
Cavity	SDC08-2

\*Max pressure at port 2 is 210 bar [3000 psi]

### PERFORMANCE CURVES



### MODEL CODE

S207 - V - 24 - H - 3W - 377

#### Seal Option

Code	Seal kit
V-Viton®	SK1043V

#### Coil Voltage

12 - 12 VDC  
24 - 24 VDC  
110 - 110 VAC\*  
220 - 220 VAC\*

\*External rectifier needed

#### Connector Type

H - DIN43650  
F - Flying lead  
DM - Deutsch moulded

#### Housing Material

Omit - Aluminum / No housing  
377 - Steel

#### Housing

Code	Ports	Aluminium	Steel
Omit	No Housing		
2W	1/4" BSP	A1485	
3W	3/8" BSP	A1043	A14175
6T	3/8" SAE	A15676	A14843

\* Aluminum bodies are to be used for pressures less than 210 bar [3000 psi].

\* Additional housings available