

# Solenoid Valves

## SBV11-8-C

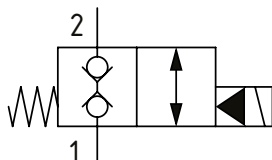
Solenoid Valve, 2-way, Poppet Type, Normally Closed, Pilot Operated, Double Blocking

350 bar [5000 psi] • 45 l/min [12 US gpm]

### OPERATION AND DESCRIPTION

This is a 2-way, 2-position, poppet type, pilot operated, normally closed, bi-directional solenoid valve. In its de-energized condition flow is blocked in both directions. Leakage in either direction is kept to a minimum due to the poppet design. When energized, flow can take place from port 2 to 1 and from 1 to 2. These valves can be used to hold loads in position or interrupt a pressure line where flow is expected to pass in both directions in the de-energized condition.

### SCHEMATIC



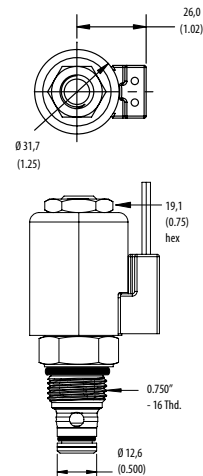
### PERFORMANCE DATA

<b>Rated Pressure</b>	<b>350 bar [5000 psi]</b>
<b>Rated flow</b>	<b>45 l/min [12 US gpm]</b>
<b>Leakage</b>	5 drops/ min @ 350 bar [5000 psi]
<b>Coil Options</b>	P series
<b>Weight</b>	0.12 kg [0.26 lb]
<b>Cavity</b>	SDC08-2

### DIMENSIONS

mm [in]

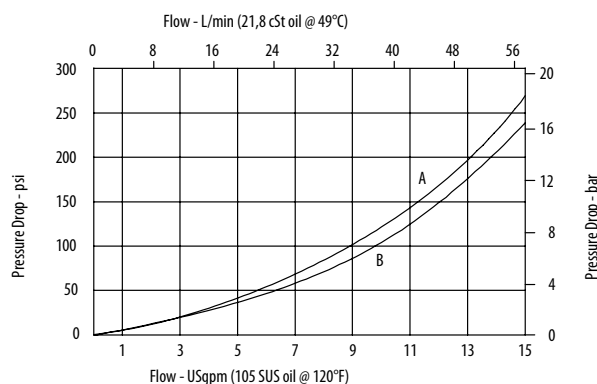
**Coil nut torque**  
5-8 Nm [4-6 ft. lbs]



**Installation torque**  
34-41 Nm [25-30 ft. lbs]

### PERFORMANCE CURVES

#### Pressure Drop



A - Port 1 to 2 • B - Port 2 to 1

### MODEL CODE

**SBV11 - 8 - V - C - M - A - 2G - 12D - W - P**

#### Seal Option

Code	Seal kit
Omit - Buna - N	02-160777
V - Viton	02-160778

#### Manual Override Option

Omit - No manual override  
M - Pull and Twist

#### Housing Material

Omit - No Housing  
A - Aluminium  
S - Steel

#### Housing

Code	Ports	Aluminium	Steel
0	No Housing		
2G	1/4" BSP	02-160727	02-160733
3G	3/8" BSP	02-160728	02-160734
4T	#4 SAE	02-160730	02-160736
6T	#6 SAE	02-160731	02-160737
8T	#8 SAE	02-160732	02-160738

\* Aluminium bodies are to be used for pressures less than 210 bar [3000 psi].

\* Additional housings available

#### Coil Series

Omit - No coil  
P - 8 Series, 23 W

#### Connector Type

Omit - No coil  
G - ISO 4400 DIN 43650  
Q - Spade terminals  
W - Flying lead  
N - Deutsch (DC only)  
Y - Amp JR (DC only)  
D - Metripack 150 male (DC only)  
J - Metripack 280 male (DC only)

#### Coil Voltage

Code	Coil Voltage
00	No Coil, nut included (p/n 565558)
12D	12 VDC
24D	24 VDC
115A	115 VAC**
230A	230 VAC**
12B	2VDC/w diode*
24B	24 VDC/w diode*

\*Optional arc suppression diode

\*\*Internally rectified

\*\*\*Other voltage options available