

Solenoid Valves

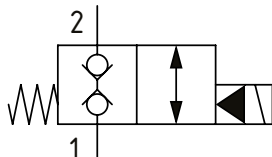
SBV11-12-C

Solenoid Valve, 2-way, Poppet Type, Normally Closed, Pilot Operated, Double Blocking
350 bar [5000 psi] • 114 l/min [30 USgpm]

OPERATION AND DESCRIPTION

This is a 2-way, 2-position, poppet type, pilot operated, normally closed, bi-directional solenoid valve. In its de-energized condition flow is blocked in both directions. Leakage in either direction is kept to a minimum due to the poppet design. When energized, flow can take place from port 2 to 1 and from 1 to 2. These valves can be used to hold loads in position or interrupt a pressure line where flow is expected to pass in both directions in the de-energized condition.

SCHEMATIC



PERFORMANCE DATA

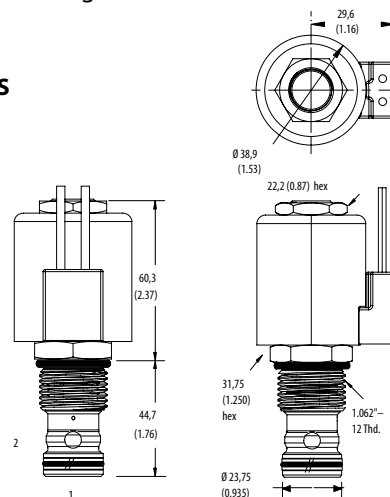
Rated Pressure	350 bar [5000 psi]
Rated flow	114 l/min [30 US gpm]
Leakage	5 drops/ min @ 350 bar [3000 psi]
Coil Options	H series
Weight	0.27 kg [0.59 lb]
Cavity	C-12-2 / C-12-2U

DIMENSIONS

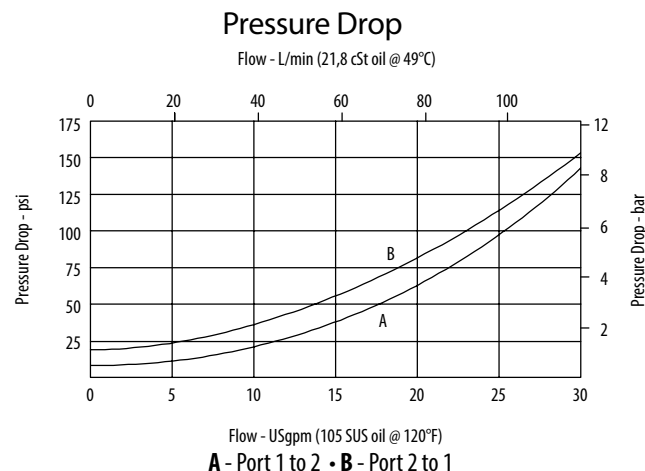
mm [in]

Coil nut torque
 5-8 Nm [4-6 ft. lbs]

Installation torque
 A - 81-95 Nm [60-70 ft lbs]
 S - 102-115 Nm [75-85 ft lbs]



PERFORMANCE CURVES



MODEL CODE

SBV11 - 12 - V - C - A - 4G - U - 12D - G - H

Seal Option		Housing Material				Coil Series	
Code	Seal kit	Omit - No Housing				Omit - No coil	
Omit-Buna - N	02-165889	A - Aluminum				H - 10 series, 29 W	
V-Viton	02-165888	S - Steel				Connector Type	
Housing		Coil Voltage					
Code	Ports	C-12-2 Aluminum Heavy Duty	C-12-2U Aluminum Heavy Duty	C-12-2 Steel Heavy Duty	C-12-2U Steel Heavy Duty	Code	Coil Voltage
Omit	No Housing					00	No Coil, nut included, (p/n 02-175698)
4G	1/2" BSP	02-161118	02-161116	02-172062	02-172512	12D	12 VDC
6G	3/4" BSP	02-161117	02-161115	02-169665	02-162922	24D	24 VDC
10T	#10 SAE	02-160640	02-160641	02-169744	02-169817	115A	115 VAC**
12T	#12 SAE	02-160644	02-160645	02-169782	02-169790	230A	230 VAC**
						12B	2VDC/w diode*
						24B	24 VDC/w diode*

* Aluminum bodies are to be used for pressures less than 210 bar [3000 psi].
 * Additional housings available

Cavity
Omit - Cavity without undercut/No housing
U - Cavity with undercut

*Optional arc suppression diode
 **Internally rectified
 ***Other voltage options available