

# Solenoid Valves

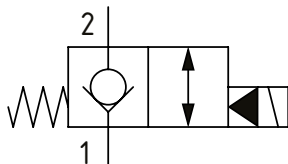
## SV13-10-C

Solenoid Valve, 2-way, Poppet Type, Normally Closed, Pilot Operated with Reverse Free Flow  
**350 bar [5000 psi] • 45 l/min [12 US gpm]**

### OPERATION AND DESCRIPTION

This is a 2-way, 2-position, poppet type, pilot operated, normally closed solenoid valve. In its de-energized condition, flow passes from port 1 to 2 but is blocked in the opposite direction. When energized, flow passes from port 2 to 1 and from 1 to 2. Due to the low leakage provided by the poppet design, these valves can be used to hold loads in position or to interrupt a pressure line where flow normally passes in both directions.

### SCHEMATIC



### PERFORMANCE DATA

<b>Rated Pressure</b>	<b>350 bar [5000 psi]</b>
<b>Rated flow</b>	<b>45 l/min [12 US gpm]</b>
<b>Leakage</b>	5 drops/min @ 350 bar [5000 psi]
<b>Coil Options</b>	H series
<b>Weight</b>	0.18 kg [0.39 lb]
<b>Cavity</b>	SDC10-2

### MODEL CODE

**SV13 - 10 - V - C - M - S - 2G - 12D - G - H**

#### Seal Option

Code	Seal kit
Omit-Buna - N	565803
V-Viton	566086

#### Manual Override Option

Omit - No manual override  
M - Pull and Twist

#### Housing Material

Omit - No housing  
S - Steel

#### Housing

Code	Ports	Steel
0	No Housing	
2G	1/4" BSP	02-175102
3G	3/8" BSP	02-175103
6T	#6 SAE	02-175100
8T	#8 SAE	02-175101

\* Aluminum bodies are to be used for pressures less than 210 bar [3000 psi].  
\* Additional housings available

#### Coil Series

Omit - No coil  
H - 10 series, 29 W

#### Connector Type

Omit - No coil  
G - ISO 4400 DIN 43650  
Q - Spade terminals  
W - Flying lead  
N - Deutsch (DC only)  
Y - Amp JR (DC only)  
D - Metripack 150 male (DC only)  
J - Metripack 280 male (DC only)

#### Coil Voltage

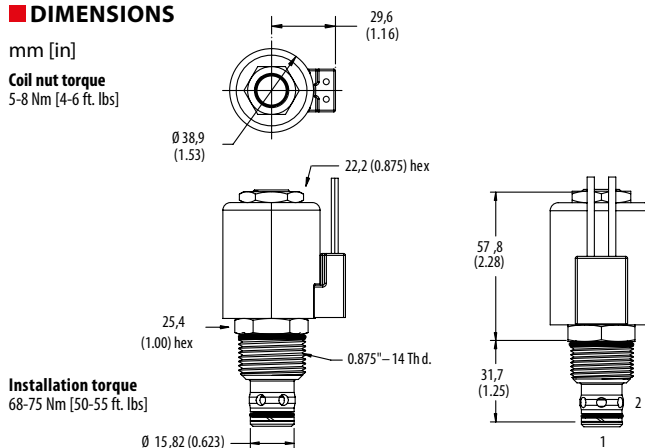
Code	Coil Voltage
00	No Coil, nut included, (p/n 02-175698)
12D	12 VDC
24D	24 VDC
115A	115 VAC**
230A	230 VAC**
12B	2VDC/w diode*
24B	24 VDC/w diode*

\*Optional arc suppression diode  
\*\*Internally rectified  
\*\*\*Other voltage options available

### DIMENSIONS

mm [in]

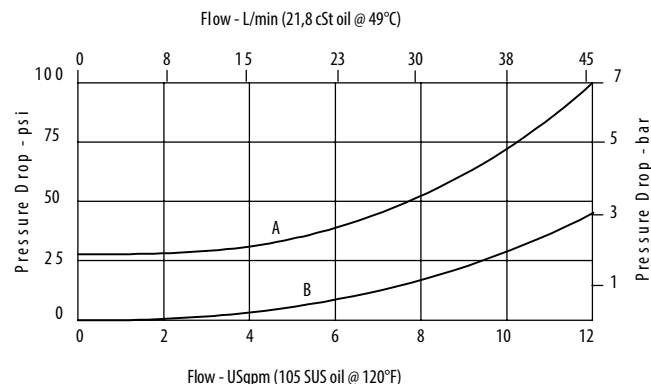
**Coil nut torque**  
5-8 Nm [4-6 ft. lbs]



**Installation torque**  
68-75 Nm [50-55 ft. lbs]

### PERFORMANCE CURVES

#### Pressure Drop



A - Port 1 to port 2 • B - Port 2 to port 1 energized