

# Solenoid Valves

## SV12-10-4

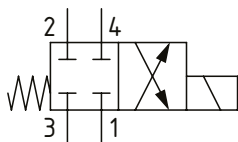
Solenoid Valve, 4-way, 2-position, Spool Type

350 bar [5000 psi] • 23 l/min [6 USgpm]

### OPERATION AND DESCRIPTION

This is a 4-way, 2-position, spool type, direct acting solenoid valve. In the de-energized condition, all ports are blocked. When energized, port 3 is open to 4 and port 2 to 1. These valves can be used to isolate a function until required. Always check the operating envelope to make sure the valve will work under the required application conditions.

### SCHEMATIC



### PERFORMANCE DATA

<b>Rated Pressure</b>	<b>350 bar [5000 psi]</b>
<b>Flow Capability</b>	<b>23 l/min [6 US gpm]</b>
<b>Leakage</b>	140 ml/min [8.5 in3] at 350 bar [5000 psi]
<b>Coil Options</b>	H series
<b>Weight</b>	0.44 kg [1 lb]
<b>Cavity</b>	SDC10-4

### MODEL CODE

**SV12 - 10 - V - 4 - M - S - 2G - 12D - G - H**

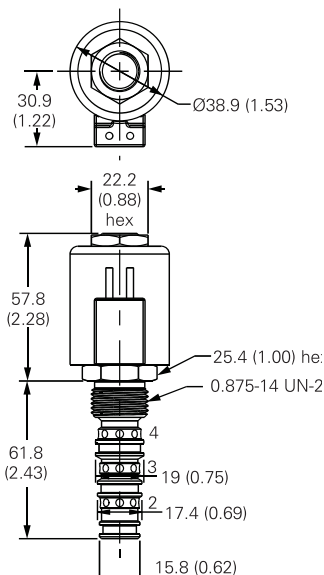
<p><b>Seal Option</b></p> <table border="1"> <tr> <th>Code</th> <th>Seal kit</th> </tr> <tr> <td>Omit-Buna - N</td> <td>889625</td> </tr> <tr> <td>V-Viton</td> <td>566080</td> </tr> </table> <p><b>Manual Override Option</b></p> <p>Omit - No manual override M - Pull and Twist</p> <p><b>Housing</b></p> <table border="1"> <thead> <tr> <th>Code</th> <th>Ports</th> <th>Steel</th> </tr> </thead> <tbody> <tr> <td>0</td> <td>No Housing</td> <td></td> </tr> <tr> <td>2G</td> <td>1/4" BSP</td> <td>02-175102</td> </tr> <tr> <td>3G</td> <td>3/8" BSP</td> <td>02-175103</td> </tr> <tr> <td>6T</td> <td>#6 SAE</td> <td>02-175100</td> </tr> <tr> <td>8T</td> <td>#8 SAE</td> <td>02-175101</td> </tr> </tbody> </table> <p><small>* Aluminum bodies are to be used for pressures less than 210 bar [3000 psi]. * Additional housings available</small></p>	Code	Seal kit	Omit-Buna - N	889625	V-Viton	566080	Code	Ports	Steel	0	No Housing		2G	1/4" BSP	02-175102	3G	3/8" BSP	02-175103	6T	#6 SAE	02-175100	8T	#8 SAE	02-175101	<p><b>Housing Material</b></p> <p>Omit - No Housing S - Steel</p> <p><b>Coil Voltage</b></p> <table border="1"> <thead> <tr> <th>Code</th> <th>Coil Voltage</th> </tr> </thead> <tbody> <tr> <td>00</td> <td>No Coil, nut included, (p/n 02-175698)</td> </tr> <tr> <td>12D</td> <td>12 VDC</td> </tr> <tr> <td>24D</td> <td>24 VDC</td> </tr> <tr> <td>115A</td> <td>115 VAC**</td> </tr> <tr> <td>230A</td> <td>230 VAC**</td> </tr> <tr> <td>12B</td> <td>2VDC/w diode*</td> </tr> <tr> <td>24B</td> <td>24 VDC/w diode*</td> </tr> </tbody> </table> <p><small>*Optional arc suppression diode **Internally rectified ***Other voltage options available</small></p>	Code	Coil Voltage	00	No Coil, nut included, (p/n 02-175698)	12D	12 VDC	24D	24 VDC	115A	115 VAC**	230A	230 VAC**	12B	2VDC/w diode*	24B	24 VDC/w diode*	<p><b>Coil Series</b></p> <p>Omit - No coil H - 10 series, 29 W</p> <p><b>Connector Type</b></p> <p>Omit - No coil G - ISO 4400 DIN 43650 W - Flying lead N - Deutsch (DC only) Y - Amp JR (DC only) D - Metripack 150 male DC only J - Metripack 280 male (DC only) E - Weather Pack (Packard) female on wire leads F - Weather Pack (Packard) female on wire leads</p>
Code	Seal kit																																									
Omit-Buna - N	889625																																									
V-Viton	566080																																									
Code	Ports	Steel																																								
0	No Housing																																									
2G	1/4" BSP	02-175102																																								
3G	3/8" BSP	02-175103																																								
6T	#6 SAE	02-175100																																								
8T	#8 SAE	02-175101																																								
Code	Coil Voltage																																									
00	No Coil, nut included, (p/n 02-175698)																																									
12D	12 VDC																																									
24D	24 VDC																																									
115A	115 VAC**																																									
230A	230 VAC**																																									
12B	2VDC/w diode*																																									
24B	24 VDC/w diode*																																									

### DIMENSIONS

mm [in]

Coil nut torque  
5-8 Nm [4-6 ft. lbs]

Installation torque  
81-95 Nm [60-70 ft. lbs]



### PERFORMANCE CURVES

