

# Solenoid Valves

## SV15-10-O

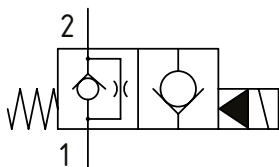
Solenoid Valve, 2-way, Poppet Type, Normally Open, Pilot Operated

350 bar [5000 psi] • 45 l/min [12 US gpm]

### OPERATION AND DESCRIPTION

This is a 2-way, 2-position, poppet type, pilot operated, normally open solenoid valve. In its de-energized condition, flow can take place from port 2 to 1 but is restricted in the other direction. When energized, flow can take place from port 1 to 2 but is blocked in the other direction. Leakage is kept to a minimum due to the poppet design. These valves can be used to hold loads in position when energized or bypass excess oil to tank in a fail-safe way.

### SCHEMATIC



### PERFORMANCE DATA

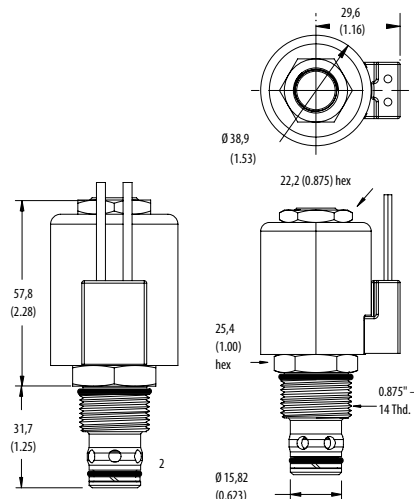
Rated Pressure	350 bar [5000 psi]
Rated flow	45 l/min [12 US gpm]
Leakage	5 drops/ min @ 350 bar [5000 psi]
Coil Options	H series
Weight	0.18 kg [0.39 lb]
Cavity	SDC10-2

### DIMENSIONS

mm [in]

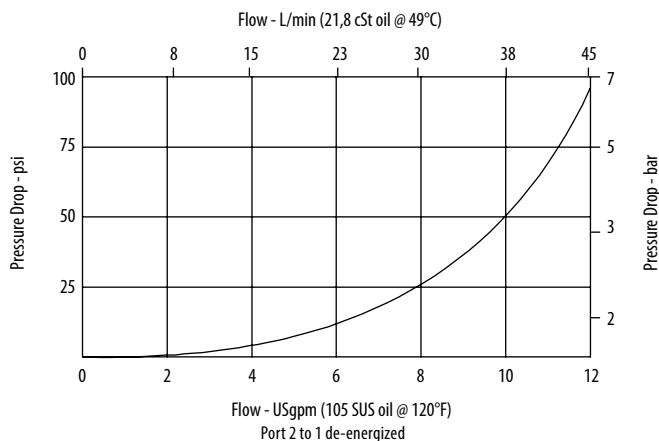
Coil nut torque  
5-8 Nm [4-6 ft. lbs]

Installation torque  
68-75 Nm [50-55 ft. lbs]



### PERFORMANCE CURVES

#### Pressure Drop



### MODEL CODE

SV15 - 10 - V - O - P - S - 2G - 12D - G - H

#### Seal Option

Code	Seal kit
Omit - Buna - N	565803
V - Viton	566086

#### Manual Override Option

Omit - No manual override  
P - Push type  
S - Screw type

#### Housing Material

Omit - No Housing  
S - Steel

#### Housing

Code	Ports	Steel
00	No Housing	
2G	1/4" BSP	02-175102
3G	3/8" BSP	02-175103
6T	#6 SAE	02-175100
8T	#8 SAE	02-175101

\* Aluminum bodies are to be used for pressures less than 210 bar [3000 psi].  
\* Additional housings available

#### Coil Series

Omit - No coil  
H - 10 series, 29 W

#### Connector Type

Omit - No coil  
G - ISO 4400 DIN 43650  
Q - Spade terminals  
W - Flying lead  
N - Deutsch (DC only)  
Y - Amp JR (DC only)  
D - Metripack 150 male (DC only)  
J - Metripack 280 male (DC only)

#### Coil Voltage

Code Coil Voltage

00	No Coil, nut included, (p/n 02-175698)
12D	12 VDC
24D	24 VDC
115A	115 VAC**
230A	230 VAC**
12B	2VDC/w diode*
24B	24VDC/w diode*

\*Optional arc suppression diode  
\*\*Internally rectified  
\*\*\*Other voltage options available