

Solenoid Valves

SV1-16-C

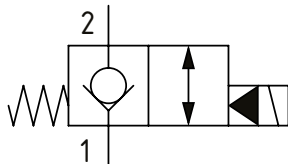
Solenoid Valve, 2-way, Poppet Type, Normally Closed, Pilot Operated with Reverse Free Flow

210 bar [3000 psi] • 132 l/min [35 US gpm]

OPERATION AND DESCRIPTION

This is a 2-way, 2-position, poppet type, pilot operated, normally closed solenoid valve. In its de-energized condition, flow passes from port 1 to 2 but is blocked in the opposite direction. When energized, flow passes from port 2 to 1 and from 1 to 2. Due to the low leakage provided by the poppet design, these valves can be used to hold loads in position or to interrupt a pressure line where flow normally passes in both directions.

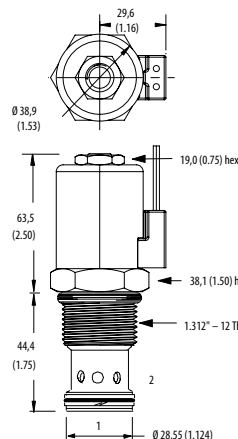
SCHEMATIC



DIMENSIONS

mm [in]

Coil nut torque
5-8 Nm [4-6 ft. lbs]

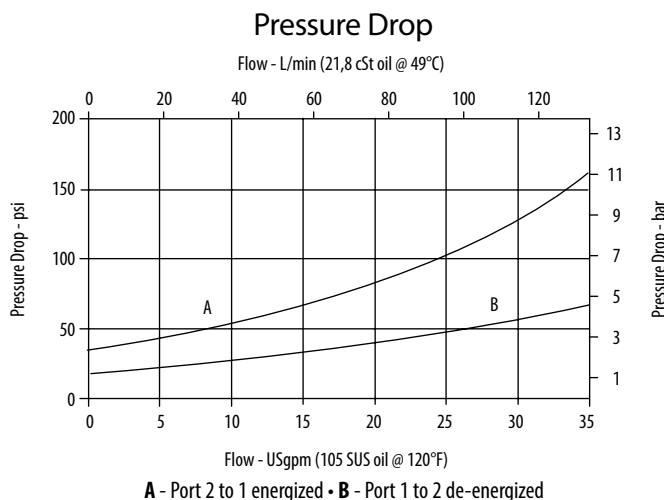


Installation torque
108-122 Nm [80-90 ft. lbs]

PERFORMANCE DATA

Rated Pressure	210 bar [3000 psi]
Rated flow	132 l/min [35 US gpm]
Leakage	5 drops/ min @ 210 bar [3000 psi]
Coil Options	J Series
Weight	1.15 kg [2.53 lb]
Cavity	SDC16-2

PERFORMANCE CURVES



MODEL CODE

SV1 - 16 - V - C - M - 6B - 12D - G

Seal Option

Code	Seal kit
Omit - Buna - N	565810
V - Viton	02-889609

Manual Override Option

Omit - No manual override
M - Pull and Twist
R - Cable type

Housing

Code	Ports	Aluminum Standard duty	Aluminum Heavy duty
0	No Housing		
6B	3/4" BSP	02-175463	
12T	#12 SAE	566149	
6G	3/4" BSP		876718
10H	#10 SAE		876717
12H	#12 SAE		566113

* Aluminum bodies are to be used for pressures less than 210 bar [3000 psi].
* Additional housings available

Connector Type

Omit - No coil
G - ISO 4400 DIN 43650
Q - Spade terminals
W - Flying lead
N - Deutsch (DC only)
Y - Amp JR (DC only)
D - Metripack 150 male (DC only)
J - Metripack 280 male (DC only)

Coil Voltage

Code	Coil Voltage
00	No Coil, nut included (p/n 565558)
12D	12 VDC
24D	24 VDC
115A	115 VAC**
230A	230 VAC**
12B	2VDC/w diode*
24B	24 VDC/w diode*

*Optional arc suppression diode
**Internally rectified
***Other voltage options available