

# Solenoid Valves

## SV3-12-O

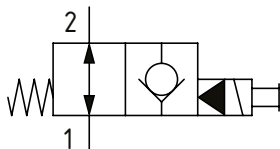
Solenoid Valve, 2-way, Poppet Type, Normally Open, Pilot Operated with Reverse Free Flow

210 bar [3000 psi] • 114 l/min [30 USgpm]

### OPERATION AND DESCRIPTION

This is a 2-way, 2-position, poppet type, pilot operated, normally open solenoid valve. When de-energized, flow can take place from port 2 to 1 and from 1 to 2. In its energized condition, flow can take place from port 1 to 2 but is blocked in the other direction. Leakage is kept to a minimum due to the poppet design. These valves can be used to hold loads in position when energized, interrupt a pressure line where flow normally passes in both directions, or bypass excess oil to tank in a fail-safe way.

### SCHEMATIC



### PERFORMANCE DATA

<b>Rated Pressure</b>	<b>210 bar [3000 psi]</b>
<b>Rated flow</b>	<b>114 l/min [30 US gpm]</b>
<b>Leakage</b>	5 drops/ min @ 210 bar [3000 psi]
<b>Coil Options</b>	J series
<b>Weight</b>	0.34 kg [0.74 lb]
<b>Cavity</b>	C-12-2/C-12-2U

### MODEL CODE

SV3 - 12 - V - O - P - A - 4G - U - 12D - G

**Seal Option**

Code	Seal kit
Omit - Buna - N	02-165889
V - Viton	02-165888

**Manual Override Option**

Omit - No manual override	<b>Housing Material</b>
P - Push type	Omit - No housing
S - Screw type	A - Aluminum

**Housing**

Code	Ports	C-12-2 Aluminum Heavy Duty	C-12-2U Aluminum Heavy Duty
0	No Housing		
4G	1/2" BSP	02-161118	02-161116
6G	3/4" BSP	02-161117	02-161115
10T	#10 SAE	02-160640	02-160641
12T	#12 SAE	02-160644	02-160645

\* Aluminum bodies are to be used for pressures less than 210 bar [3000 psi].  
\* Additional housings available

**Cavity**

Omit - Cavity without undercut/No housing
U - Cavity with undercut

**Connector Type**

Omit - No coil  
G - ISO 4400 DIN 43650  
Q - Spade terminals  
W - Flying lead  
N - Deutsch (DC only)  
Y - Amp JR (DC only)  
D - Metripack 150 male (DC only)  
J - Metripack 280 male (DC only)

**Coil Voltage**

Code	Coil Voltage
00	No Coil, nut included (p/n 565559)
12D	12 VDC
24D	24 VDC
115A	115 VAC**
230A	230 VAC**
12B	2VDC/w diode*
24B	24 VDC/w diode*

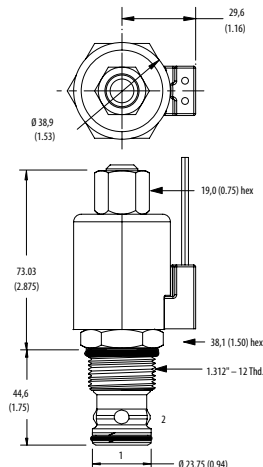
\*Optional arc suppression diode  
\*\*Internally rectified  
\*\*\*Other voltage options available

### DIMENSIONS

mm [in]

**Coil nut torque**  
5-8 Nm [4-6 ft. lbs]

**Installation torque**  
81-95 Nm [60-70 ft. lbs]



### PERFORMANCE CURVES

