

# Solenoid Valves

## SV3-16-O

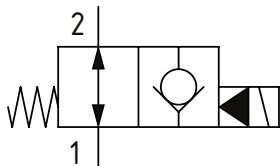
Solenoid Valve, 2-way, Poppet Type, Normally Open, Pilot Operated with Reverse Free Flow

210 bar [3000 psi] • 132 l/min [35 US gpm]

### OPERATION AND DESCRIPTION

This is a 2-way, 2-position, poppet type, pilot operated, normally open solenoid valve. When de-energized, flow can take place from port 2 to 1 and from 1 to 2. In its energized condition, flow can take place from port 1 to 2 but is blocked in the other direction. Leakage is kept to a minimum due to the poppet design. These valves can be used to hold loads in position when energized, interrupt a pressure line where flow normally passes in both directions, or bypass excess oil to tank in a fail-safe way.

### SCHEMATIC



### PERFORMANCE DATA

Rated Pressure	210 bar [3000 psi]
Rated flow	132 l/min [35 US gpm]
Leakage	5 drops/ min @ 210 bar [3000 psi]
Coil Options	J series
Weight	0.9 kg [1.98 lb]
Cavity	SDC16-2

### MODEL CODE

SV3 - 16 - V - O - P - A - 6B - 12D - G

#### Seal Option

Code	Seal kit
Omit - Buna - N	565810
V-Viton	889609

#### Manual Override Option

Omit - No manual override  
P - Push type  
S - Screw type

#### Housing Material

Omit - No Housing  
A - Aluminum

#### Housing

Code	Ports	Aluminum Standard Duty	Aluminum Heavy Duty
0	No Housing		
6B	3/4" BSP	02-175463	
12T	#12 SAE	566149	
6G	3/4" BSP		876718
10H	#10 SAE		876717
12H	#12 SAE		566113

\* Aluminum bodies are to be used for pressures less than 210 bar [3000 psi].

\* Additional housings available

#### Connector Type

Omit - No coil  
G - ISO 4400 DIN 43650  
Q - Spade terminals  
W - Flying lead  
N - Deutsch (DC only)  
Y - Amp JR (DC only)  
D - Metripack 150 male (DC only)  
J - Metripack 280 male (DC only)

#### Coil Voltage

Code	Coil Voltage
00	No Coil, nut included, (p/n 565559)
12D	12 VDC
24D	24 VDC
115A	115 VAC**
230A	230 VAC**
12B	2VDC/w diode*
24B	24 VDC/w diode*

\*Optional arc suppression diode

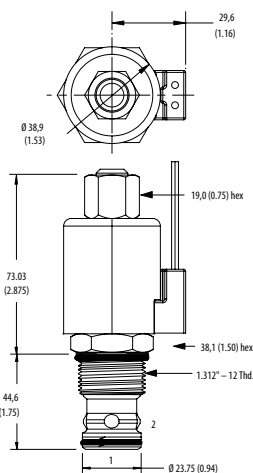
\*\*Internally rectified

\*\*\*Other voltage options available

### DIMENSIONS

mm [in]

Coil nut torque  
5-8 Nm [4-6 ft. lbs.]

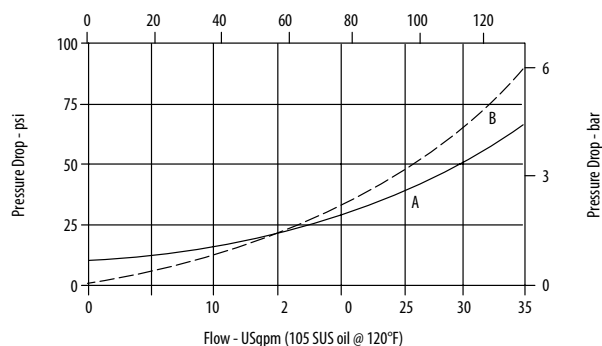


Installation torque  
108-122 Nm [80-90 ft. lbs.]

### PERFORMANCE CURVES

#### Pressure Drop

Flow - L/min (21,8 cSt oil @ 49°C)



A - Port 1 to 2 energized • B - Port 2 to 1 de-energized