

Solenoid Valves

CP521-21

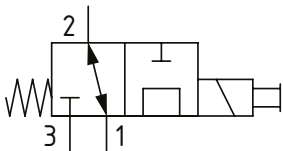
Solenoid Valve, 3-way, 2-position, Spool Type

240 bar [3500 psi] • 60 l/min [16 US gpm]

OPERATION AND DESCRIPTION

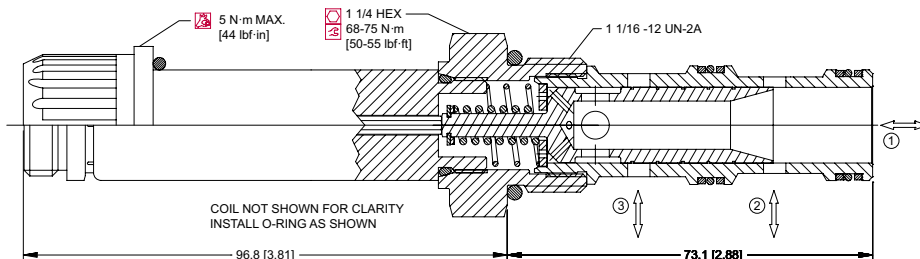
This is a 3-way, 2-position, spool type, direct acting solenoid valve. In the de-energized condition, port 1 is open to port 2 and port 3 is blocked. When energized, port 3 is open to port 1 and port 2 is blocked. These valves can be used in normally open, normally closed or selector modes. This valve has an open transition, which reduces pressure spikes when changing flow direction. Always check the operating envelope to make sure the valve will work under the required application conditions.

SCHEMATIC



DIMENSIONS

mm [in]

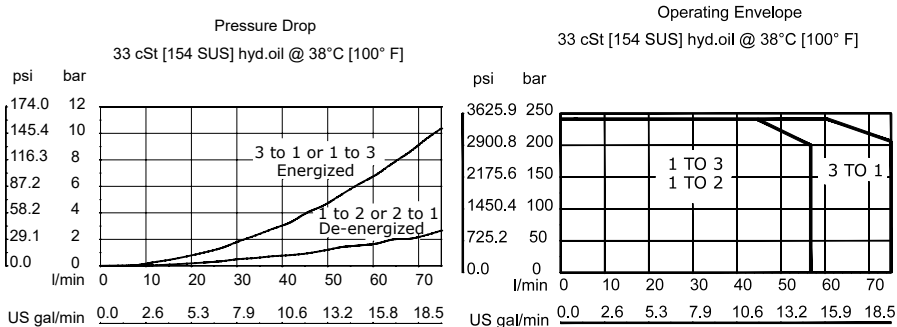


PERFORMANCE DATA

Rated Pressure*	240 bar [3500 psi]
Flow Capability	60 l/min [16 US gpm]
Coil Options	D14E [30W]
Weight	0.80 kg [1.76 lb]
Cavity	CP12-3

*Rated Pressure based on NFPA fatigue test standards (at 1 million cycles)

PERFORMANCE CURVES



MODEL CODE

CP521 - 21 - B - 10S - 24D - S

Seal Option

Code	Seal kit
B-Buna - N	120053
V-Viton	120052

Housing

Code	Ports
0	No Housing
4B	AL, 1/2 BSP CP12-3-4B
6B	AL, 3/4 BSP CP12-3-6B
10S	AL, #10 SAE CP12-3-10S
12S	AL, #12 SAE CP12-3-12S

* Aluminum bodies are to be used for pressures less than 210 bar [3000 psi].

* Additional housings available

Connector Type

- 0 - No connector
- S - Spade
- L - Lead wire
- H - DIN43650
- M2 - Metripak 150 Type 1
- DE - Deutsch
- AJ - Amp Junior
- DED - Deutsch with diode

Coil Voltage

Code	Coil Voltage
00	No Coil, nut included*
10D	10 VDC
12D	12 VDC
24D	24 VDC

*Coil nut and o-ring (p/n 321567)