

Solenoid Valves

EVH 06/D5

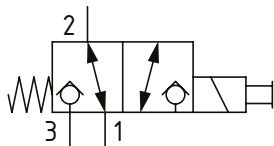
Solenoid Valve, 3-way, 2-position, Poppet Type

230 bar [3300 psi] • 25 l/min [6.6 US gpm]

OPERATION AND DESCRIPTION

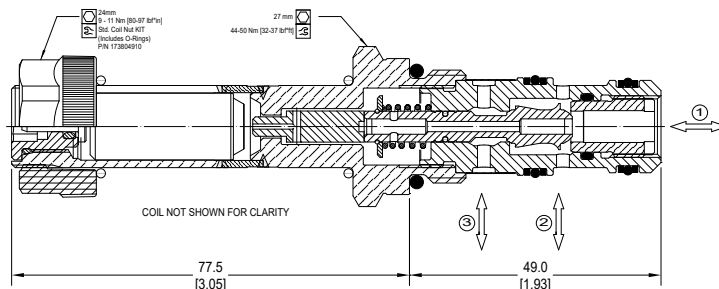
This is a 3-way, 2-position, poppet type, direct acting solenoid valve. When de-energized, the valve blocks flow from port 3 while allowing flow between port 1 and 2. When energized, the valve poppet blocks flow from port 1 while allowing flow between port 2 and 3. These valves come standard with a push pin manual override. This valve is ideal for low leakage requirements to hold a load in position.

SCHEMATIC



DIMENSIONS

mm [in]

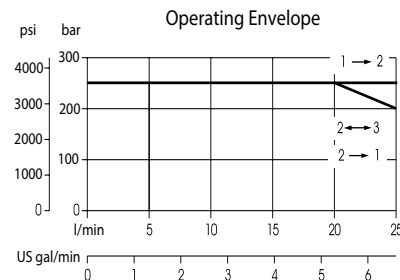
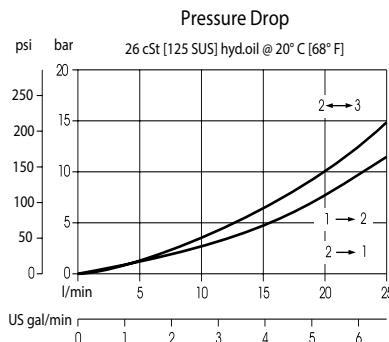


PERFORMANCE DATA

Rated Pressure*	230 bar [3300 psi]
Flow Capability	25 l/min [6.6 US gpm]
Leakage	6 drops/min @ Rated Pressure
Coil Options	M16, R16
Weight	0.44 kg [0.97 lb]
Cavity	NCS06/3

*Rated Pressure based on NFPA fatigue test standards (at 1 million cycles)

PERFORMANCE CURVES



MODEL CODE

EVH 06/D5 - 12D - DE - PB - SE6S - B

Coil Voltage

Standard Coil Code	Robust Coil Code	Coil Voltage
00	R00	No Coil, nut included*
10D	R10D	10 VDC
12D	R12D	12 VDC
20D	R20D	20 VDC
24D	R24D	24 VDC
110A		110 VAC**
220A		220 VAC**

*Standard Coil - Plastic coil nut and o-rings (p/n 17400021)

**Robust Coil - Steel coil nut and no o-rings (p/n 173804910)

**DIN only - external rectifier needed

Connector Type

Standard Coil Code	Robust Coil Code	Connector Type
00	00	No Coil
AJ		Amp Junior
AJD		Amp Junior with Diode
AS	AS	AMP SuperSeal 1.5
ASD	ASDB*	AMP SuperSeal with Diode
DE	DE	Deutsch
DED	DEDB*	Deutsch with Diode
FL	FL	Flying Leads
FLD	FLDB*	Flying Leads with Diode
DN		DIN 43650

*Bi-directional diode

Seal Option

Code	Seal kit
B-Buna - N	230000590
V-Viton	230000430

Housing

Code	Ports	Housing Model Code
00	No Housing	
SE6S	#6 SAE, AL	NCS06/3-SE-6S
SE8S	#8 SAE, AL	NCS06/3-SE-8S
SE3/8	3/8 BSP, AL	NCS06/3-SE-3/8
SE1/2	1/2 BSP, AL	NCS06/3-SE-1/2

* Aluminum bodies are to be used for pressures less than 210 bar [3000 psi].

* Additional housings available

Manual Override Option

- Omit - Push Pin
- PB - Push Button
- SPS - Screw Type
- OPS - Protected Push Pin
- PAT - Push and Twist