

Solenoid Valves

EVK 06/C5

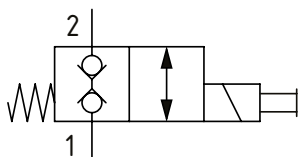
Solenoid Valve, 2-way, Poppet Type, Normally Closed, Direct Acting, Double Blocking

210 bar [3000 psi] • 40 l/min [10.6 US gpm]

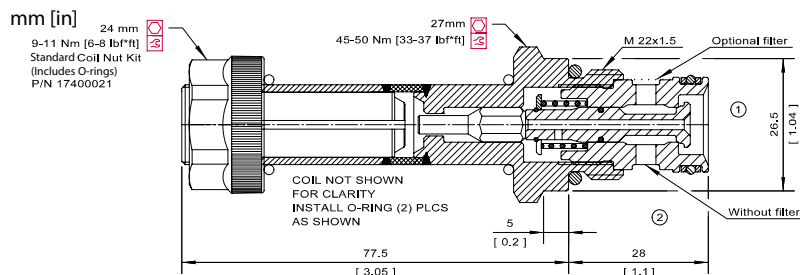
OPERATION AND DESCRIPTION

This is a 2-way, 2-position, poppet type, direct acting, normally closed, bi-directional solenoid valve. In its de-energized condition, flow is blocked in both directions. Leakage in either direction is kept to a minimum due to the poppet design. When energized, flow can take place from port 2 to 1 and from 1 to 2. These valves come standard with a push pin manual override. These valves can be used to hold loads in position or interrupt a pressure line where flow is expected to pass in both directions in the de-energized condition. They do not suffer from momentary opening due to shock pressures.

SCHEMATIC



DIMENSIONS



PERFORMANCE DATA

Rated Pressure* 210 bar [3000 psi]

Flow Capability 40 l/min [10.6 US gpm]

Leakage

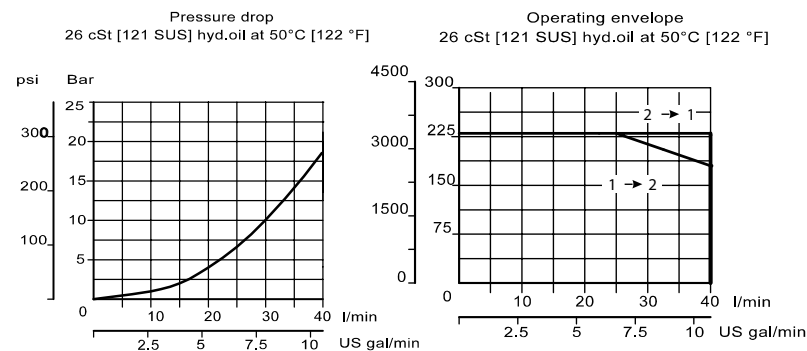
Coil Options M16, R16

Weight 0.43 kg [0.95 lb]

Cavity NCS06/2

*Rated Pressure based on NFPA fatigue test standards (at 1 million cycles)

PERFORMANCE CURVES



MODEL CODE

EVK 06/C5 - F - 12D - DE - PB - 00 - B

Filter Option

Omit - No filter
F - Filter 300 µm

Coil Voltage

Standard Coil Code	Robust Coil Code	Coil Voltage
00	R00	No Coil, nut included*
10D	R10D	10 VDC
12D	R12D	12 VDC
20D	R20D	20 VDC
24D	R24D	24 VDC
110A		110 VAC**
220A		220 VAC**

*Standard Coil - Plastic coil nut and o-rings (p/n 17400021)

**Robust Coil - Steel coil nut and no o-rings (p/n 173804910)

**DIN only - external rectifier needed

Connector Type

Standard Coil Code	Robust Coil Code	Connector Type
00	00	No Coil
AJ		Amp Junior
AJD		Amp Junior with Diode
AS	AS	AMP SuperSeal 1.5
ASD	ASDB*	AMP SuperSeal with Diode
DE	DE	Deutsch
DED	DEDB*	Deutsch with Diode
FL	FL	Flying Leads
FLD	FLDB*	Flying Leads with Diode
DN		DIN 43650

*Bi-directional diode

Seal Option

Code	Seal kit
B	Buna - N 230000440
V	Viton 230000710

Housing

Code	Ports	Housing Model Code
00	No Housing	
DG6S	#6 SAE, AI	NCS06/2 - DG -6S
DG8S	#8 SAE, AI	NCS06/2 - DG -8S
DG3/8	3/8 BSP, AI	NCS06/2 - DG -3/8
DG1/2	1/2 BSP, AI	NCS06/2 - DG -1/2

* Aluminum bodies are to be used for pressures less than 210 bar [3000 psi].

* Additional housings available

Manual Override Option

Omit - Push Pin
PB - Push Button
SPS - Screw Type
OPS - Protected Push Pin
PAT - Push and Twist