

# Solenoid Valves

## SV08-22-01

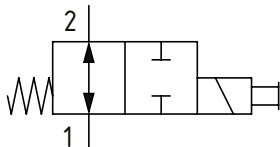
Solenoid Valve, 2-way, Spool Type, Normally Open

230 bar [3300 psi] • 16 l/min [4.2 US gpm]

### OPERATION AND DESCRIPTION

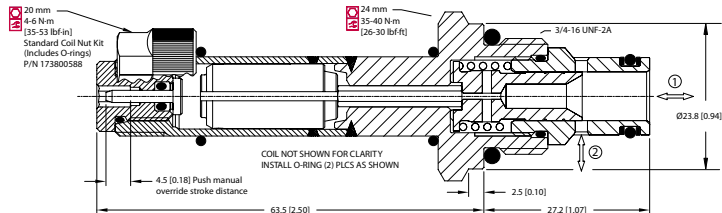
This is a 2-way, 2-position, spool type, direct acting, normally open solenoid valve. When de-energized, flow can take place from port 2 to 1 and from 1 to 2. In its energized condition, flow is blocked in both directions. The valve will be subject to normal spool leakage dependent on the pressure difference between the ports. They come standard with a push pin manual override. These valves can be used to interrupt a pressure line where flow is expected to pass in both directions in the energized condition.

### SCHEMATIC



### DIMENSIONS

mm [in]



### PERFORMANCE DATA

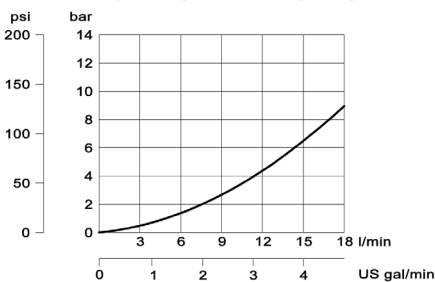
<b>Rated Pressure*</b>	<b>230 bar [3300 psi]**</b>
<b>Flow Capability</b>	<b>16 l/min [4.2 US gpm]</b>
<b>Coil Options</b>	M13, R13
<b>Weight</b>	0.29 kg [0.64 lb]
<b>Cavity</b>	SDC08-2

\*Rated Pressure based on NFPA fatigue test standards (at 1 million cycles)

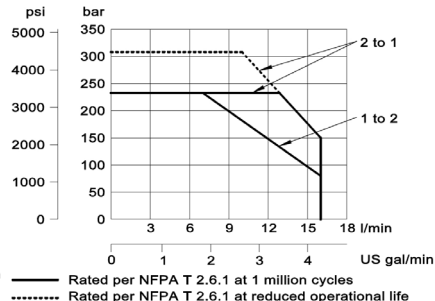
\*\*Valve can operate at 315 bar [4600 psi] for 400,000 cycles. With inlet at port 2, this can be increased to 600,000 cycles.

### PERFORMANCE CURVES

Pressure drop  
26 cSt [121 SUS] hyd.oil at 50°C [122 °F]



Operating envelope



### MODEL CODE

**SV08 - 22 - 01 - 12D - DE - PB - B - 4S**

#### Coil Voltage

Standard Coil Code	Robust Coil Code	Coil Voltage
00	R00	No Coil, nut included*
10D	R10D	10 VDC
12D	R12D	12 VDC
20D	R20D	20 VDC
24D	R24D	24 VDC
110A		110 VAC**
220A		220 VAC**

\*Standard Coil - Plastic coil nut and o-rings (p/n 173800588)

\*\*Robust Coil - Steel coil nut and no o-rings (p/n 173800539)

\*\*DIN only - external rectifier needed

#### Connector Type

Standard Coil Code	Robust Coil Code	Connector Type
00	00	No Coil
AJ		Amp Junior
AJD		Amp Junior with Diode
AS	AS	AMP SuperSeal 1.5
ASD	ASDB*	AMP SuperSeal with Diode
DE	DE	Deutsch
DED	DEDB*	Deutsch with Diode
FL	FL	Flying Leads
FLD	FLDB*	Flying Leads with Diode
DN		DIN 43650

\*Bi-directional diode

#### Housing

Code	Ports	Housing Model Code
00	No Housing	
4S	#4 SAE, AL	CP08-2-4S
6S	#6 SAE, AL	CP08-2-6S
56S	#6 SAE, Steel	CP08-2-56S
DG2B	1/4 BSP, AL	SDC08-2-DG2B
DG3B	3/8 BSP, AL	SDC08-2-DG3B
S3B	3/8 BSP, Steel	CP08-2-S3B

\* Aluminum bodies are to be used for pressures less than 210 bar [3000 psi].

\* Additional housings available

#### Seal Option

Code	Seal kit
B-Buna - N	354003119
V-Viton	354003619

#### Manual Override Option

Omit - Push Pin  
PB - Push Button  
SPS - Screw Type