

# Solenoid Valves

## SV08-34-04

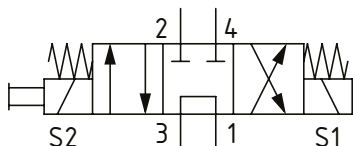
Solenoid Valve, 4-way, 3-position, Spool Type

230 bar [3300 psi] • 8 l/min [2 US gpm]

### OPERATION AND DESCRIPTION

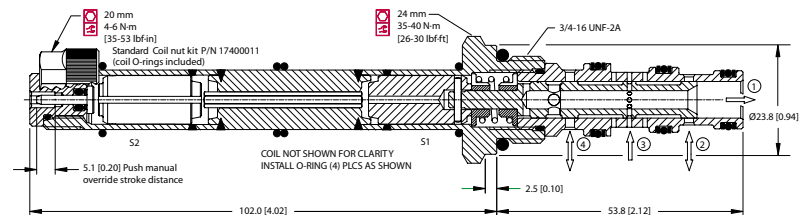
This is a 4-way, 3-position, spool type, direct acting solenoid valve. In the center condition, ports 2 and 4 are closed while port 3 is connected to port 1. By energizing one coil, port 3 opens to 2 and port 4 to 1. When energizing the other coil, port 3 opens to 4 and port 2 to 1. This valve provides a directional control function with a neutral de energized state allowing the inlet flow to pass to tank or to another function while the work ports are blocked. It can be used in any hydraulic application where an actuator needs to be controlled in both directions. Always check the operating envelope to make sure the valve will work under the required application conditions. Port 1 is not intended for use as inlet (Tank only).

### SCHEMATIC



### DIMENSIONS

mm [in]



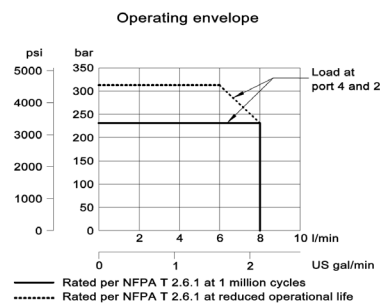
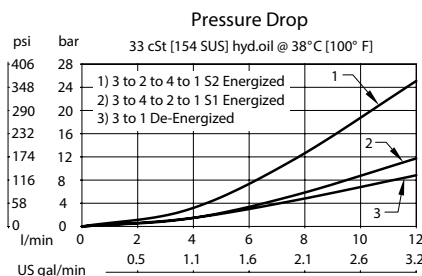
### PERFORMANCE DATA

<b>Rated Pressure*</b>	<b>230 bar [3300 psi]**</b>
<b>Flow Capability</b>	<b>8 l/min [2 US gpm]</b>
<b>Coil Options</b>	M13, R13
<b>Weight</b>	0.55 kg [1.21 lb]
<b>Cavity</b>	SDC08-4

\*Rated Pressure based on NFPA fatigue test standards (at 1 million cycles)

\*\*Valve can operate with an inlet pressure of 315 bar [4600 psi] at port 3 for 500,000 cycles

### PERFORMANCE CURVES



### MODEL CODE

**SV08 - 34 - 04 - 12D - DE - PB - B - 4S**

#### Coil Voltage

Standard Coil Code	Robust Coil Code	Coil Voltage
00	R00	No Coil, nut included*
10D	R10D	10 VDC
12D	R12D	12 VDC
20D	R20D	20 VDC
24D	R24D	24 VDC
110A		110 VAC**
220A		220 VAC**

\*Standard Coil - Plastic coil nut and o-rings (p/n 17400011)

\*\*Robust Coil - Steel coil nut and no o-rings (p/n 173800539)

\*\*DIN only - external rectifier needed

#### Connector Type

Standard Coil Code	Robust Coil Code	Connector Type
00	00	No Coil
AJ		Amp Junior
AJD		Amp Junior with Diode
AS	AS	AMP SuperSeal 1.5
ASD	ASDB*	AMP SuperSeal with Diode
DE	DE	Deutsch
DED	DEDB*	Deutsch with Diode
FL	FL	Flying Leads
FLD	FLDB*	Flying Leads with Diode
DN		DIN 43650

\*Bi-directional diode

#### Housing

Code	Ports & Material	Housing Model Code
00	No Housing	
4S	#4 SAE, AL	CP08-4-4S
6S	#6 SAE, AL	CP08-4-6S
S6S	#6 SAE, Steel	CP08-4-S6S
L2B	1/4 BSP, AL	SDC08-4-L2B
S3B	3/8 BSP, Steel	CP08-4-S3B

\* Aluminum bodies are to be used for pressures less than 210 bar [3000 psi].

\* Additional housings available

#### Seal Option

Code	Seal kit
B-Buna - N	354003319
V-Viton	354003919

#### Manual Override Option

Omit-Push Pin  
PB-Push Button  
SPS-Screw Type