

# Solenoid Valves

## SV10-23-01

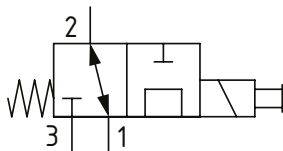
Solenoid Valve, 3-way, 2-position, Spool Type

230 bar [3300 psi] • 35 l/min [9 US gpm]

### OPERATION AND DESCRIPTION

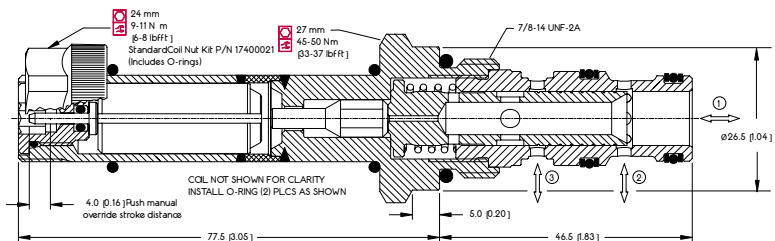
This is a 3-way, 2-position, spool type, direct acting solenoid valve. In the de-energized condition, port 1 is open to port 2 and port 3 is blocked. When energized, port 3 is open to port 1 and port 2 is blocked. These valves can be used in normally open, normally closed or selector modes. They come standard with a push pin manual override. Always check the operating envelope to make sure the valve will work under the required application conditions.

### SCHEMATIC



### DIMENSIONS

mm [in]



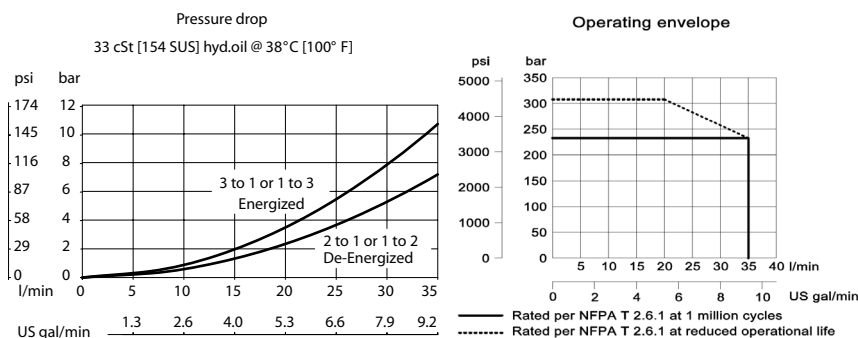
### PERFORMANCE DATA

Rated Pressure*	230 bar [3300 psi]**
Flow Capability	35 l/min [9 US gpm]
Coil Options	M16, R16
Weight	0.42 kg [0.93 lb]
Cavity	SDC10-3

\*Rated Pressure based on NFPA fatigue test standards (at 1 million cycles)

\*\*Valve can operate at 315 bar [4600 psi] for 400,000 cycles. With inlet at port 2, this can be increased to 600,000 cycles.

### PERFORMANCE CURVES



### MODEL CODE

SV10 - 23 - 01 - 12D - DE - PB - B - 6S

#### Coil Voltage

Standard Coil Code	Robust Coil Code	Coil Voltage
00	R00	No Coil, nut included*
10D	R10D	10 VDC
12D	R12D	12 VDC
20D	R20D	20 VDC
24D	R24D	24 VDC
110A		110 VAC**
220A		220 VAC**

\*Standard Coil - Plastic coil nut and o-rings (p/n 17400021)

\*\*Robust Coil - Steel coil nut and no o-rings (p/n 173804910)

\*\*DIN only - external rectifier needed

#### Connector Type

Standard Coil Code	Robust Coil Code	Connector Type
00	00	No Coil
AJ		Amp Junior
AJD		Amp Junior with Diode
AS	AS	AMP SuperSeal 1.5
ASD	ASDB*	AMP SuperSeal with Diode
DE	DE	Deutsch
DED	DEDB*	Deutsch with Diode
FL	FL	Flying Leads
FLD	FLDB*	Flying Leads with Diode
DN		DIN 43650

\*Bi-directional diode

#### Housing

Code	Ports	Housing Model Code
00	No Housing	
6S	#6 SAE, AL	CP10-3-6S
8S	#8 SAE, AL	CP10-3-8S
S8S	#8 SAE, Steel	CP10-3-S8S
DG3B	3/8 BSP, AL	SDC10-3-DG3B
DG4B	1/2 BSP, AL	SDC10-3-DG4B
S4B	1/2 BSP, Steel	CP10-3-S4B

\* Aluminum bodies are to be used for pressures less than 210 bar [3000 psi].

\* Additional housings available

#### Seal Option

Code	Seal kit
B-Buna - N	354004210
V-Viton	354003719

#### Manual Override

Omit-Push Pin  
 PB-Push Button  
 SPS-Screw Type  
 OPS-Protected Push Pin  
 PAT-Push and Twist