

Solenoid Valves

SV10-35-05

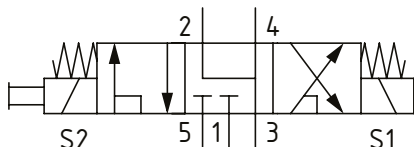
Solenoid Valve, 5-way, 3-position, Spool Type

230 bar [3300 psi] • 30 l/min [8 US gpm]

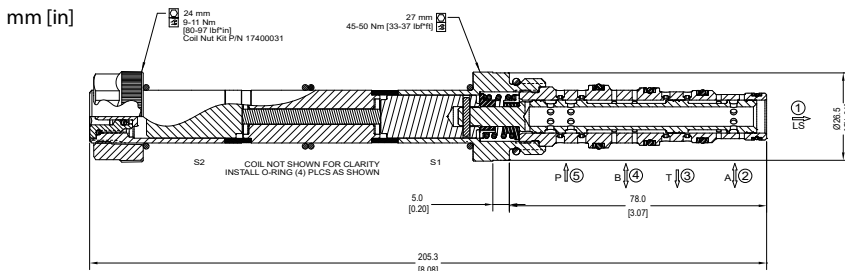
OPERATION AND DESCRIPTION

This is a 5-way, 3-position, spool type, direct acting solenoid valve. In the center condition, ports 2 and 4 are connected to port 3, and port 5 and 1 are blocked. By energizing one coil, port 5 opens to 2 and 1 and port 4 to 3. When energizing the other coil, port 5 will be open to 4 and 1, port 2 connects to 3. This valve provides a directional control function with a neutral de-energized state with the service lines open to tank allowing pressure to decay. Port 5 and port 1, which is normally used as a load sense port, are closed. The valve can be used in any hydraulic application where an actuator needs to be controlled in both directions needing a load sense line to activate a pump controller. Always check the operating envelope to make sure the valve will work under the required application conditions.

SCHEMATIC



DIMENSIONS



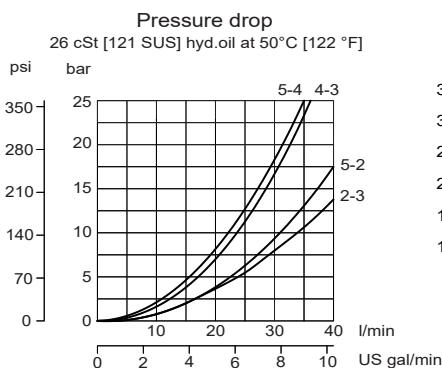
PERFORMANCE DATA

Rated Pressure*	230 bar [3300 psi]**
Flow Capability	30 l/min [8 US gpm]
Coil Options	M16, R16
Weight	0.9 kg [1.98 lb]
Cavity	SDC10-5

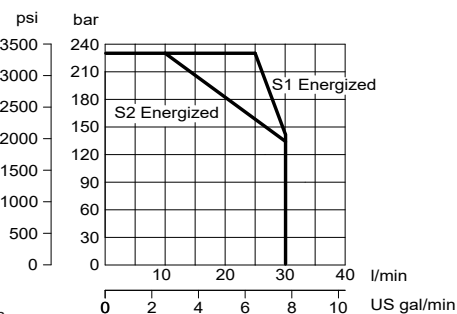
*Rated Pressure based on NFPA fatigue test standards (at 1 million cycles)

**Valve can operate with an inlet pressure of 315 bar [4600 psi] at port 3 for 400,000 cycles

PERFORMANCE CURVES



Operating envelope



MODEL CODE

SV10 - 35 - 05 - 12D - DE - PB - B - 6S

Coil Voltage

Standard Coil Code	Robust Coil Code	Coil Voltage
00	R00	No Coil, nut included*
10D	R10D	10 VDC
12D	R12D	12 VDC
20D	R20D	20 VDC
24D	R24D	24 VDC
110A		110 VAC**
220A		220 VAC**

*Standard Coil - Plastic coil nut and o-rings (p/n 17400031)

**Robust Coil - Steel coil nut and no o-rings (p/n 173804910)

**DIN only - external rectifier needed

Connector Type

Standard Coil Code	Robust Coil Code	Connector Type
00	00	No Coil
AJ		Amp Junior
AJD		Amp Junior with Diode
AS	AS	AMP SuperSeal 1.5
ASD	ASDB*	AMP SuperSeal with Diode
DE	DE	Deutsch
DED	DEDB*	Deutsch with Diode
FL	FL	Flying Leads
FLD	FLDB*	Flying Leads with Diode
DN		DIN 43650

*Bi-directional diode

Housing

Code	Ports & Material	Housing Model Code
00	No Housing	
6S	#6 SAE, AL	SDC10-5-6S
8S	#8 SAE, AL	SDC10-5-8S
S8S	#8 SAE, Steel	SDC10-5-S8S
L3B	3/8 BSP, AL	SDC10-5-L3B
L4B	1/2 BSP, AL	SDC10-5-L4B
S4B	1/2 BSP, Steel	SDC10-5-S4B

* Aluminum bodies are to be used for pressures less than 210 bar [3000 psi].

* Additional housings available

Seal Option

Code	Seal kit
B-Buna - N	11192395
V-Viton	11192396

Manual Override Option

Omit-Push Pin

PB-Push Button

SPS-Screw Type

OPS-Protected Push Pin

PAP-Push and Pull*

*For PAP override, load sense pressure must be less than 150 bar