

Solenoid Valves

SV14-10-O

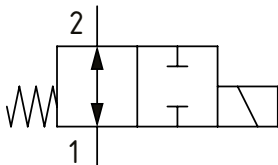
Solenoid Valve, 2-way, Spool Type, Normally Open

350 bar [5000 psi] • 23 l/min [6 US gpm]

OPERATION AND DESCRIPTION

This is a 2-way, 2-position, spool type, direct acting, normally open solenoid valve. When de-energized, flow can take place from port 2 to 1 and from 1 to 2. In its energized condition, flow is blocked in both directions. The valve will be subject to normal spool leakage dependent on the pressure difference between the ports. These valves can be used to interrupt a pressure line where flow is expected to pass in both directions in the energized condition.

SCHEMATIC



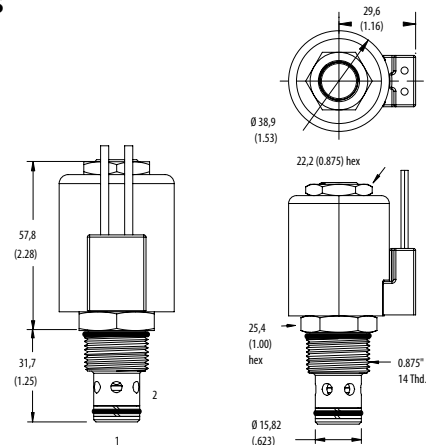
PERFORMANCE DATA

| | |
|------------------------|--|
| Rated Pressure | 350 bar [5000 psi] |
| Flow Capability | 23 l/min [6 US gpm] |
| Leakage | 140 ml/min (8.5 in ³ /min) @ 350 bar [5000 psi] |
| Coil Options | H series |
| Weight | 0.18 kg [0.39 lb] |
| Cavity | SDC10-2 |

DIMENSIONS

mm [in]

Coil nut torque
5-8 Nm [4-6 ft. lbs]

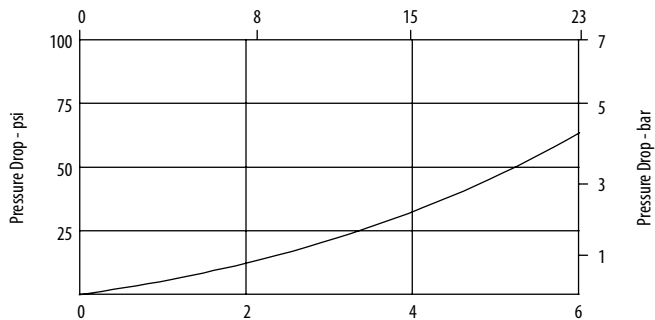


Installation torque
68-75 Nm [50-55 ft. lbs]

PERFORMANCE CURVES

Pressure Drop

Flow - L/min (21,8 cSt oil @ 49°C)



Flow - USgpm (105 SUS oil @ 120°F)

Port 2 to port 1 or Port 1 to port 2 de-energized

MODEL CODE

SV14 - 10 - V - O - M - S - 2G - 12D - G - H

Seal Option

| Code | Seal kit |
|-----------------|----------|
| Omit - Buna - N | 566806 |
| V - Viton | 889627 |

Manual Override Option

Omit - No manual override
M - Pull and Twist

Housing Material

Omit - No housing
S - Steel

Housing

| Code | Ports | Steel |
|------|------------|-----------|
| 0 | No Housing | |
| 2G | 1/4" BSP | 02-175102 |
| 3G | 3/8" BSP | 02-175103 |
| 6T | #6 SAE | 02-175100 |
| 8T | #8 SAE | 02-175101 |
| 6H | #6 SAE | |
| 8H | #8 SAE | |

* Aluminum bodies are to be used for pressures less than 210 bar [3000 psi].

* Additional housings available

Coil Series

Omit - No coil
H - 10 series, 29 W

Connector Type

Omit - No coil
G - ISO 4400 DIN 43650
Q - Spade terminals
W - Flying lead
N - Deutsch (DC only)
Y - Amp JR (DC only)
D - Metripack 150 male (DC only)
J - Metripack 280 male (DC only)

Coil Voltage

| Code | Coil Voltage |
|------|--|
| 00 | No Coil, nut included, (p/n 02-175698) |
| 12D | 12 VDC |
| 24D | 24 VDC |
| 115A | 115 VAC** |
| 230A | 230 VAC** |
| 12B | 2VDC/w diode* |
| 24B | 24 VDC/w diode* |

*Optional arc suppression diode

**Internally rectified

***Other voltage options available