

Solenoid Valves

SV15-23-04

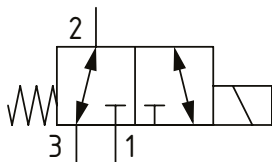
Solenoid Valve, 3-way, 2-position, Spool Type

230 bar [3300 psi] • 50 l/min [13.2 US gpm]

OPERATION AND DESCRIPTION

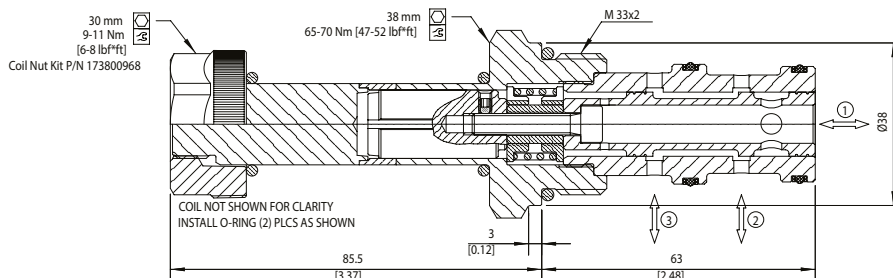
This is a 3-way, 2-position, spool type, direct acting solenoid valve. In the de-energized condition, port 3 is open to port 2 and port 1 is blocked. When energized, port 2 is open to port 1 and port 3 is blocked. These valves can be used in normally open, normally closed or selector modes. Always check the operating envelope to make sure the valve will work under the required application conditions.

SCHEMATIC



DIMENSIONS

mm [in]



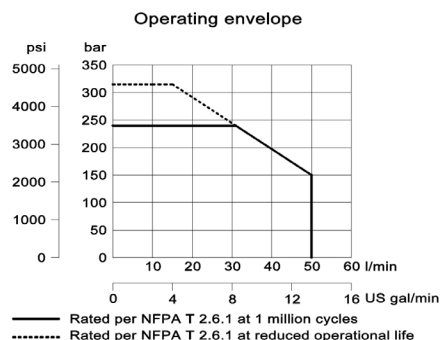
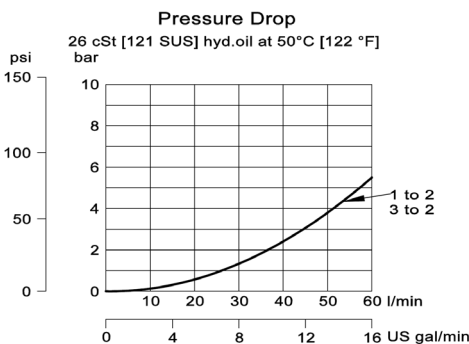
PERFORMANCE DATA

Rated Pressure*	230 bar [3300 psi]**
Flow Capability	50 l/min [13.2 US gpm]
Coil Options	M19
Weight	0.89 kg [1.96 lb]
Cavity	NCS 12/3

*Rated Pressure based on NFPA fatigue test standards (at 1 million cycles)

**Valve can operate at 315 bar [4600 psi] for 100,000 cycles. With inlet at port 2, this can be increased to 300,000 cycles.

PERFORMANCE CURVES



MODEL CODE

SV15 - 23 - 04 - 12D - DE - B - 8S

Coil Voltage

Standard Coil Code	Robust Coil Code	Coil Voltage
00	R00	No Coil, nut included*
10D	R10D	10 VDC
12D	R12D	12 VDC
20D	R20D	20 VDC
24D	R24D	24 VDC
110A		110 VAC**
220A		220 VAC**

*Standard Coil - Plastic coil nut and o-rings (p/n 173800968)

**DIN only - external rectifier needed

Connector Type

Code	Connector Type
00	No Coil
AJ	Amp Junior
AJD	Amp Junior with Diode
DE	Deutsch
DED	Deutsch with Diode
FL	Flying Leads
DN	DIN 43650

Housing

Code	Ports	Housing Model Code
00	No Housing	
8S	#8 SAE, AL	NCS 12/3-SE-8S
12S	#12 SAE, AL	NCS 12/3-DG-12S
4B	1/2 BSP, AL	NCS 12/3-DG-1/2
6B	3/4 BSP, AL	NCS 12/3-DG-3/4

* Aluminum bodies are to be used for pressures less than 210 bar [3000 psi].

* Additional housings available

Seal Option

Code	Seal kit
B	Buna - N 11115764
V	Viton 11115765