

Solenoid Valves

SV15-24-02

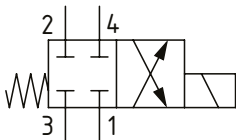
Solenoid Valve, 4-way, 2-position, Spool Type

230 bar/3300 psi • 60 l/min [16 US gpm]

OPERATION AND DESCRIPTION

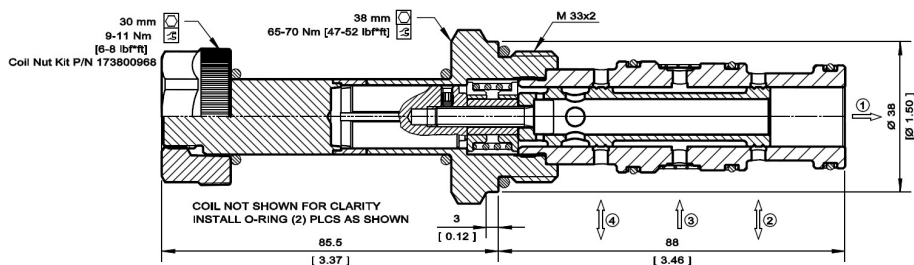
This is a 4-way, 2-position, spool type, direct acting solenoid valve. In the de-energized condition, all ports are blocked. When energized, port 3 is open to 4 and port 2 to 1. These valves can be used to isolate a function until required. Always check the operating envelope to make sure the valve will work under the required application conditions. Port 1 is not intended for use as inlet (Tank only)

SCHEMATIC



DIMENSIONS

mm [in]



PERFORMANCE DATA

Rated Pressure* 230 bar [3300 psi]**

Flow Capability 60 l/min [16 US gpm]

Coil Option M19

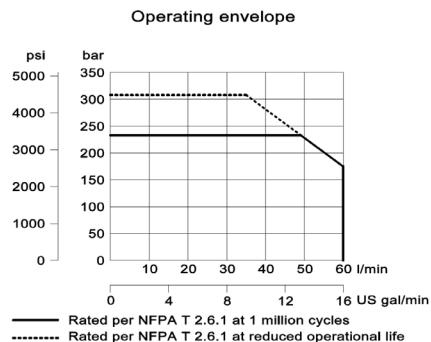
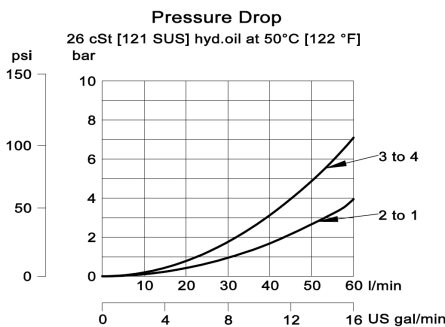
Weight 0.95 kg [2.09 lb]

Cavity NCS 12/4

*Rated Pressure based on NFPA fatigue test standards (at 1 million cycles)

**Valve can operate with an inlet pressure of 315 bar [4600 psi] at port 3 for 300,000 cycles.

PERFORMANCE CURVES



MODEL CODE

SV15 - 24 - 02 - 12D - DE - B - F - 8S

Coil Voltage

Code	Coil Voltage
00	No Coil, nut included*
10D	10 VDC
12D	12 VDC
20D	20 VDC
24D	24 VDC
110A	110 VAC**
220A	220 VAC**

*Standard Coil - Plastic coil nut and o-rings (p/n 173800968)

**DIN only - external rectifier needed

Connector Type

Code	Connector Type
00	No Coil
AJ	Amp Junior
AJD	Amp Junior with Diode
DE	Deutsch
DED	Deutsch with Diode
FL	Flying Leads
DN	DIN 43650

Housing

Code	Ports & Material	Housing Model Code
00	No Housing	
8S	#8 SAE, AL	NCS12/4-L-8S
12S	#12 SAE, AL	NCS12/4-L-12S
4B	1/2 BSP, AL	NCS12/4-L-1/2
6B	3/4 BSP, AL	NCS12/4-L-3/4

* Aluminum bodies are to be used for pressures less than 210 bar [3000 psi].

* Additional housings available

Filter Option

Omit - No filter
F - Filter 300 µm

Seal Option

Code	Seal kit
B-Buna - N	11115884
V-Viton	11115885