

Solenoid Valves

SV15-24-03

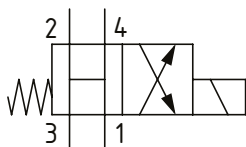
Solenoid Valve, 4-way, 2-position, Spool Type

230 bar [3300 psi] • 50 l/min [13.2 US gpm]

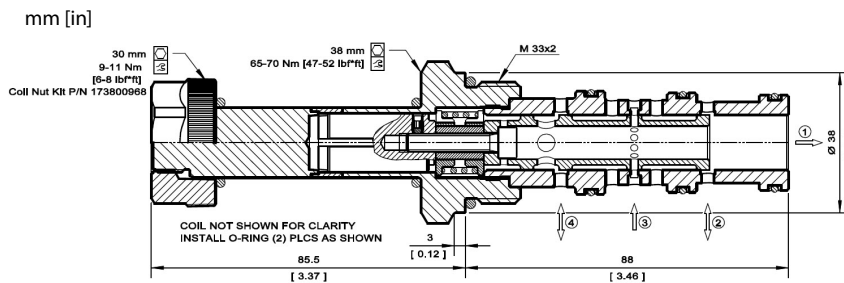
OPERATION AND DESCRIPTION

This is a 4-way, 2-position, spool type, direct acting solenoid valve. In the de-energized condition, all ports are open. When energized, port 3 is open to 4 and port 2 to 1. These valves can be used to isolate a function until required. The open center will allow all pressure in all ports to decay when de-energized. Always check the operating envelope to make sure the valve will work under the required application conditions. Port 1 is not intended for use as inlet (Tank only).

SCHEMATIC



DIMENSIONS



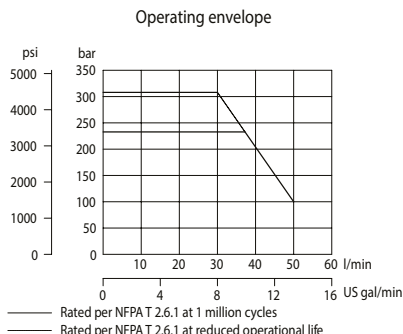
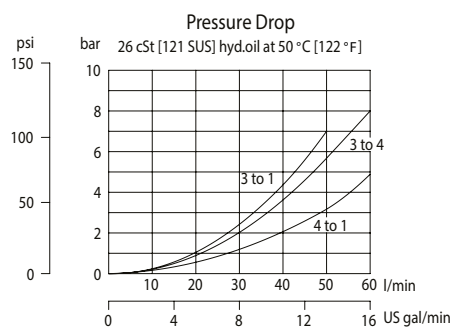
PERFORMANCE DATA

| | |
|-----------------|------------------------|
| Rated Pressure* | 230 bar [3300 psi]** |
| Flow Capability | 50 l/min [13.2 US gpm] |
| Coil Option | M19 |
| Weight | 0.95 kg [2.09 lb] |
| Cavity | NCS 12/4 |

*Rated Pressure based on NFPA fatigue test standards (at 1 million cycles)

**Valve can operate with an inlet pressure of 315 bar [4600 psi] at port 3 for 300,000 cycles.

PERFORMANCE CURVES



MODEL CODE

SV15 - 24 - 03 - 12D - DE - B - 8S

Coil Voltage

| Code | Coil Voltage |
|------|------------------------|
| 00 | No Coil, nut included* |
| 10D | 10 VDC |
| 12D | 12 VDC |
| 20D | 20 VDC |
| 24D | 24 VDC |
| 110A | 110 VAC** |
| 220A | 220 VAC** |

*Standard Coil - Plastic coil nut and o-rings (p/n 173800968)

**DIN only - external rectifier needed

Connector Type

| Code | Connector Type |
|------|-----------------------|
| 00 | No Coil |
| AJ | Amp Junior |
| AJD | Amp Junior with Diode |
| DE | Deutsch |
| DED | Deutsch with Diode |
| FL | Flying Leads |
| DN | DIN 43650 |

Housing

| Code | Ports & Material | Housing Model Code |
|------|------------------|--------------------|
| 00 | No Housing | |
| 8S | #8 SAE, AL | NCS12/4-L-8S |
| 12S | #12 SAE, AL | NCS12/4-L-12S |
| 4B | 1/2 BSP, AL | NCS12/4-L-1/2 |
| 6B | 3/4 BSP, AL | NCS12/4-L-3/4 |

* Aluminum bodies are to be used for pressures less than 210 bar [3000 psi].

* Additional housings available

Seal Option

| Code | Seal kit |
|------------|----------|
| B-Buna - N | 11115884 |
| V-Viton | 11115885 |