

# Solenoid Valves

## SV15-24-04

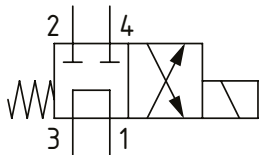
Solenoid Valve, 4-way, 2-position, Spool Type

230 bar [3300 psi] • 50 l/min [13.2 US gpm]

### OPERATION AND DESCRIPTION

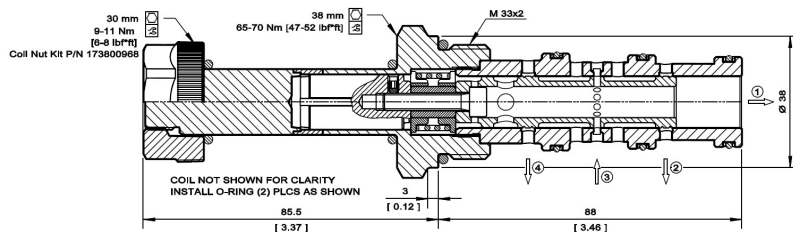
This is a 4-way, 2-position, spool type, direct acting solenoid valve. In the de-energized condition, port 3 is open to port 1 and ports 2 and 4 are blocked. When energized, port 3 is open to 4 and port 2 to 1. These valves can be used to control a unidirectional function when required. Always check the operating envelope to make sure the valve will work under the required application conditions.

### SCHEMATIC



### DIMENSIONS

mm [in]



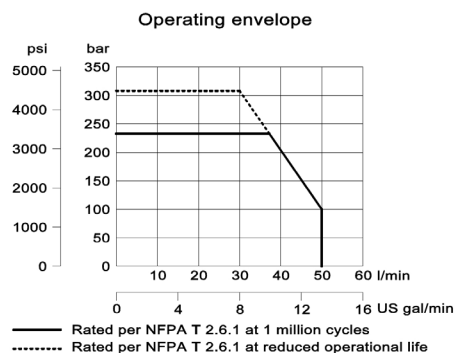
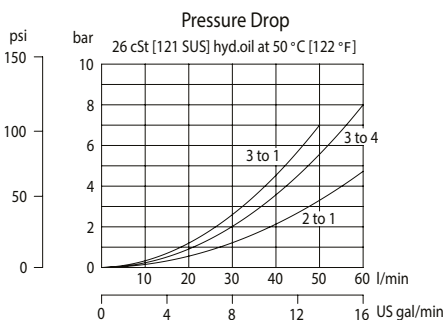
### PERFORMANCE DATA

<b>Rated Pressure*</b>	<b>230 bar [3300 psi]**</b>
<b>Flow Capability</b>	<b>50 l/min [13.2 US gpm]</b>
<b>Coil Options</b>	<b>M19</b>
<b>Weight</b>	<b>0.95 kg [2.09 lb]</b>
<b>Cavity</b>	<b>NCS 12/4</b>

\*Rated Pressure based on NFPA fatigue test standards (at 1 million cycles)

\*\*Valve can operate with an inlet pressure of 315 bar [4600 psi] at port 3 for 300,000 cycles.

### PERFORMANCE CURVES



### MODEL CODE

**SV15 - 24 - 04 - 12D - DE - BV - 8S**

#### Coil Voltage

Code	Coil Voltage
00	No Coil, nut included*
10D	10 VDC
12D	12 VDC
20D	20 VDC
24D	24 VDC
110A	110 VAC**
220A	220 VAC**

\*Standard Coil - Plastic coil nut and o-rings (p/n 173800968)

\*\*DIN only - external rectifier needed

#### Connector Type

Code	Connector Type
00	No Coil
AJ	Amp Junior
AJD	Amp Junior with Diode
DE	Deutsch
DED	Deutsch with Diode
FL	Flying Leads
DN	DIN 43650

#### Housing

Code	Ports & Material	Housing Model Code
00	No Housing	
8S	#8 SAE, AL	NCS12/4-L-8S
12S	#12 SAE, AL	NCS12/4-L-12S
4B	1/2 BSP, AL	NCS12/4-L-1/2
6B	3/4 BSP, AL	NCS12/4-L-3/4

\* Aluminum bodies are to be used for pressures less than 210 bar [3000 psi].

\* Additional housings available

#### Seal Option

Code	Seal kit
B-Buna - N	11115884
V-Viton	11115885