

# Solenoid Valves

## SVP08-CDB

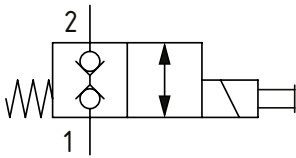


Solenoid Valve, 2-way, Poppet Type, Normally Closed, Direct Acting, Double Blocking  
**230 bar [3300 psi] • 25 l/min [6.6 US gpm]**

### OPERATION AND DESCRIPTION

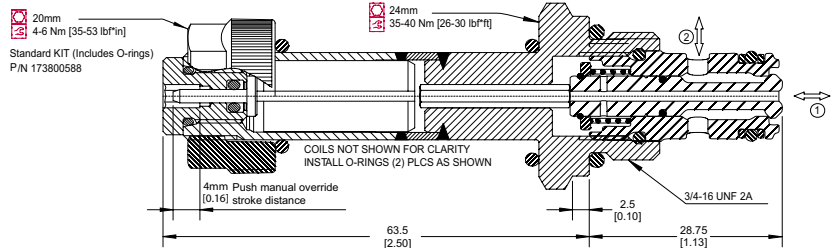
This is a 2-way, 2-position, poppet type, direct acting, normally closed, bi-directional solenoid valve. In its de-energized condition, flow is blocked in both directions. Leakage in either direction is kept to a minimum due to the poppet design. When energized, flow can take place from port 2 to 1 and from 1 to 2. These valves come standard with a push pin manual override. These valves can be used to hold loads in position or interrupt a pressure line where flow is expected to pass in both directions in the de-energized condition. They do not suffer from momentary opening due to shock pressures.

### SCHEMATIC



### DIMENSIONS

mm [in]

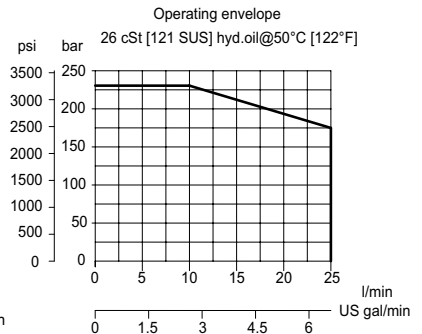
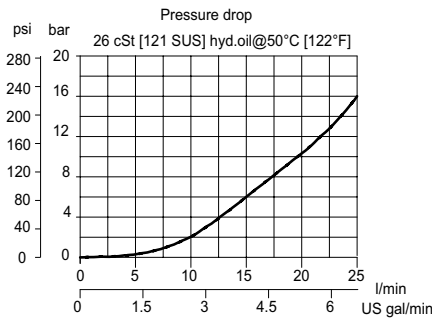


### PERFORMANCE DATA

<b>Rated Pressure*</b>	<b>230 bar [3300 psi]</b>
<b>Flow Capability</b>	<b>25 l/min [6.6 US gpm]</b>
<b>Leakage</b>	6 drops/min @ Rated Pressure
<b>Coil Options</b>	M13, R13
<b>Weight</b>	0.32 kg [0.71 lb]
<b>Cavity</b>	SDC08-2

\*Rated Pressure based on NFPA fatigue test standards (at 1 million cycles)

### PERFORMANCE CURVES



### MODEL CODE

**SVP08 - CDB - 12D - DE - PB - B - F - 4S**

#### Coil Voltage

Standard Coil Code	Robust Coil Code	Coil Voltage
00	R00	No Coil, nut included*
10D	R10D	10 VDC
12D	R12D	12 VDC
20D	R20D	20 VDC
24D	R24D	24 VDC
110A		110 VAC**
220A		220 VAC**

\*Standard Coil - Plastic coil nut and o-rings (p/n 173800588)

\*Robust Coil - Steel coil nut and no o-rings (p/n 173800539)

\*\*DIN only - external rectifier needed

#### Connector Type

Standard Coil Code	Robust Coil Code	Connector Type
00	00	No Coil
AJ		Amp Junior
AJD		Amp Junior with Diode
AS	AS	AMP SuperSeal 1.5
ASD	ASDB*	AMP SuperSeal with Diode
DE	DE	Deutsch
DED	DEDB*	Deutsch with Diode
FL	FL	Flying Leads
FLD	FLDB*	Flying Leads with Diode
DN		DIN 43650

\*Bi-directional diode

#### Housing

Code	Ports	Housing Model Code
00	No Housing	
4S	#4 SAE, AL	CP08-2-4S
6S	#6 SAE, AL	CP08-2-6S
56S	#6 SAE, Steel	CP08-2-56S
DG2B	1/4 BSP, AL	SDC08-2-DG2B
DG3B	3/8 BSP, AL	SDC08-2-DG3B
53B	3/8 BSP, Steel	CP08-2-53B

\* Aluminum bodies are to be used for pressures less than 210 bar [3000 psi].

\* Additional housings available

#### Filter Option

Omit - No filter  
 F - Filter 300 µm

#### Seal Option

Code	Seal kit
B-Buna - N	354001619
V-Viton	354001719

#### Manual Override Option

Omit - Push Pin  
 PB - Push Button  
 SPS - Screw Type