

Solenoid Valves

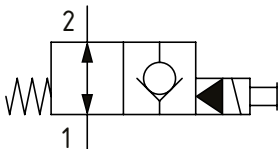
SVP10-NOR

Solenoid Valve, 2-way, Poppet Type, Normally Open, Pilot Operated with Reverse Free Flow
230 bar [3300 psi] • 80 l/min [21 US gpm]

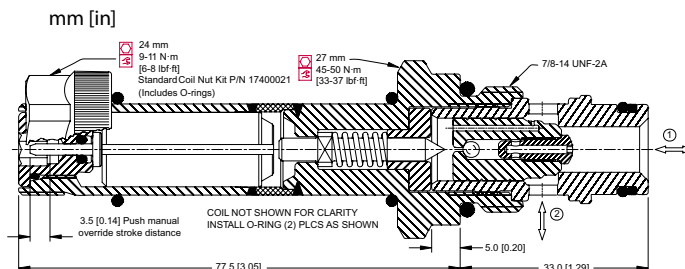
OPERATION AND DESCRIPTION

This is a 2-way, 2-position, poppet type, pilot operated, normally open solenoid valve. When de-energized, flow can take place from port 2 to 1 and from 1 to 2. In its energized condition, flow can take place from port 1 to 2 but is blocked in the other direction. Leakage is kept to a minimum due to the poppet design. Some models have the option of a filter around port 2, and these come standard with a push pin manual override. These valves can be used to hold loads in position when energized, interrupt a pressure line where flow normally passes in both directions, or bypass excess oil to tank in a fail-safe way.

SCHEMATIC



DIMENSIONS



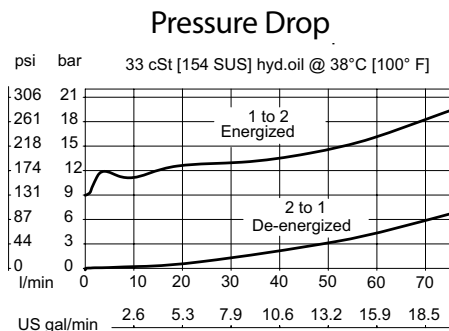
PERFORMANCE DATA

Rated Pressure*	230 bar [3300 psi]**
Rated flow	80 l/min [21 US gpm]
Leakage	6 drops/min @ Rated Pressure
Coil Options	M16, R16
Weight	0.43 kg [0.95 lb]
Cavity	SDC10-2

*Rated Pressure based on NFPA fatigue test standards (at 1 million cycles)

**Valve can operate at 315 bar [4600 psi] on port 2 for 300,000 cycles.

PERFORMANCE CURVES



MODEL CODE

SVP10 - NOR - 12D - DE - PB - B - F - 6S

Coil Voltage

Standard Coil Code	Robust Coil Code	Coil Voltage
00	R00	No Coil, nut included*
10D	R10D	10 VDC
12D	R12D	12 VDC
20D	R20D	20 VDC
24D	R24D	24 VDC
110A		110 VAC**
220A		220 VAC**

*Standard Coil - Plastic coil nut and o-rings (p/n 17400021)

*Robust Coil - Steel coil nut and no o-rings (p/n 173804910)

**DIN only - external rectifier needed

Connector Type

Standard Coil Code	Robust Coil Code	Connector Type
00	00	No Coil
AJ		Amp Junior
AJD		Amp Junior with Diode
AS	AS	AMP SuperSeal 1.5
ASD	ASDB*	AMP SuperSeal with Diode
DE	DE	Deutsch
DED	DEDB*	Deutsch with Diode
FL	FL	Flying Leads
FLD	FLDB*	Flying Leads with Diode
DN		DIN 43650

*Bi-directional diode

Housing

Code	Ports	Housing Model Code
00	No Housing	
6S	#6 SAE, AL	CP10-2-6S
8S	#8 SAE, AL	CP10-2-8S
S8S	#8 SAE, Steel	CP10-2-S8S
DG3B	3/8 BSP, AL	SDC10-2-DG3B
DG4B	1/2 BSP, AL	SDC10-2-DG4B
S4B	1/2 BSP, Steel	CP10-2-S4B

* Aluminum bodies are to be used for pressures less than 210 bar [3000 psi].

* Additional housings available

Filter Option

Omit - No filter
 F - Filter 300 µm

Seal Option

Code	Seal kit
B-Buna - N	354000719
V-Viton	354000819

Manual Override Option

Omit - Push Pin
 PB - Push Button
 SPS - Screw Type
 OPS - Protected Push Pin
 PAT - Push and Twist