

Proportional Valves

PFR21H

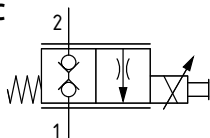
Proportional Flow Control Valve, Poppet Type, Normally Closed, Direct Acting, Partially Compensated

210 bar [3000 psi] • 20 l/min [5.3 US gpm]

DESCRIPTION AND OPERATION

This is a 2-way, poppet type, normally closed, partially pressure compensated proportional flow control valve. In the de-energized condition, flow is blocked in both directions. Energizing the coil will proportionally push the poppet away from its seat, opening port 2 to 1. This valve is ideal as a lowering valve for single acting cylinders.

SCHEMATIC



PERFORMANCE DATA

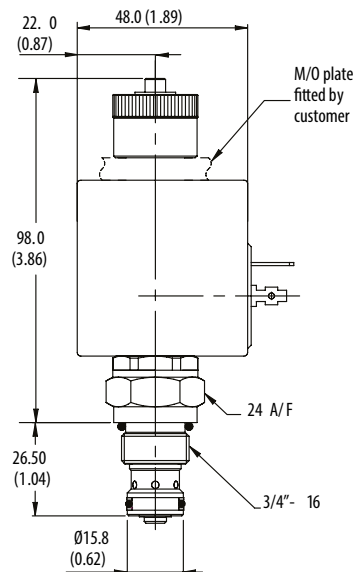
Rated pressure	210 bar [3000 psi]
Max regulated flow	20 l/min [5.3 US gpm]
Leakage	10 drops/min @ 210 bar [3000 psi]
Recommended PWM frequency	200 Hz
Threshold current	38-60% of rated current
Coil Options	C16
Weight	0.2 kg [0.44 lb]
Cavity	A6701

DIMENSIONS

mm [in]

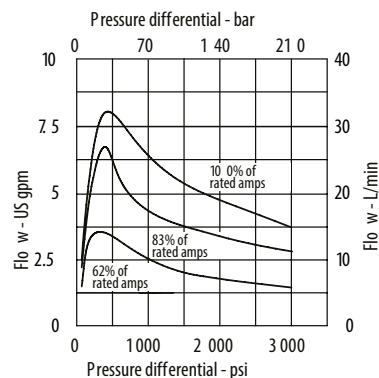
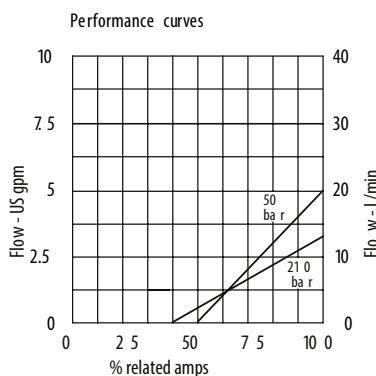
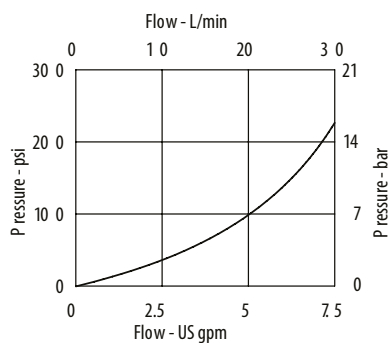
Coil Nut Torque
3.4 Nm [2.5 ft. lbs]

Installation torque
A - 30 Nm [22 ft. lbs]



PERFORMANCE CURVES

Pressure drop
Viscosity = 32 cSt (150 SSU)
PFR21H @ 100%



MODEL CODE

PFR21H - N - 6 - H - 24 - 3W

Seal Option

Code	Seal kit
N - Nitrile	SK1138
V - Viton	SK1138V

Manual Override Option

6 - Screw

Connector Type

Omit - No Coil
H - DIN 43650
F - Flying Lead
DM - Deutsch moulded

Coil Voltage

Omit - No Coil
12 - 12 VDC
24 - 24 VDC

Housing

Code	Ports	Aluminum
Omit	No housing	
2W	1/4" BSP	A12592
3W	3/8" BSP	A7450
6T	3/8" SAE	A19355

* Aluminum bodies are to be used for pressures less than 210 bar [3000 psi].
* Additional housings available