

# Proportional Valves

## PPAR1-10

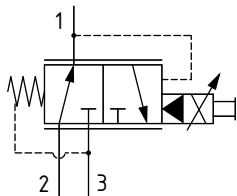
Proportional Pressure Reducing, Relieving, Pilot Operated

210 bar [3000 psi] • 30 l/min [8 US gpm]

### DESCRIPTION AND OPERATION

This is a pilot operated, proportional pressure reducing / relieving valve. In the de-energized condition, the inlet port 2 is open to the reduced port 1, which will be at the minimum setting. By energizing the coil, the pressure in port 1 will increase proportionally to the current applied. Flow through port 2 to 1 is restricted to limit the pressure in port 1. In the case of over pressurization in port 1, the spool will open port 1 to port 3, which acts as a relief valve to limit the pressure in port 1.

### SCHEMATIC

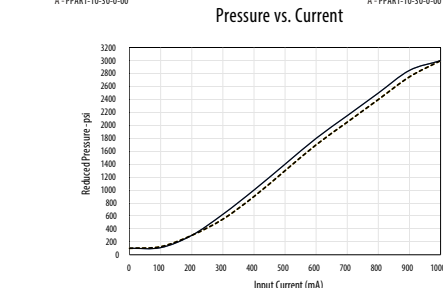
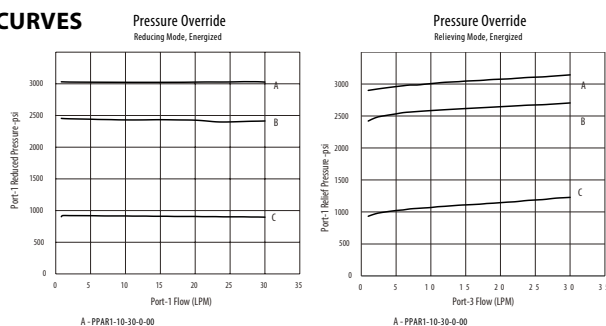


### PERFORMANCE DATA

Rated pressure*	210 bar [3000 psi]
Rated flow	30 l/min [8 US gpm]
Pressure Range	7-210 bar [100-3000 psi]
Maximum hysteresis	5%
Maximum control current	1.0 A [12 VDC coil] 0.5 A [24 VDC coil]
Coil Options	J series
Weight	0.44 kg [0.98 lb]
Cavity	SDC10-3

\*Rated pressure based on NFPA fatigue test standards (at 1 million cycles)

### PERFORMANCE CURVES



### MODEL CODE

PPAR1 - 10 - V - 100 - S - 3B - 12D - G - J

#### Seal Option

Code	Seal kit
Omit - Buna - N	565804
V - Viton	889599

#### Max Pressure Setting

Code x 100 - Pressure setting in psi [100 psi increments within specified Pressure Range]  
Pressure Range: 7-210 bar [100-3000 psi]  
Example:

Code	Bar	Psi
100	100	[1450]

#### Manual Override Option

Omit - No manual override  
S - Screw type

#### Coil series

Omit - No coil  
J - J series, 23 W

#### Connector Type

Omit - No coil  
G - DIN 43650  
Q - Spade Terminals  
W - Leadwire  
N - Deutsch  
Y - Amp JR

#### Coil Voltage

00 - No coil, nut included (p/n 565559)  
12D - 12 VDC  
24D - 24 VDC

#### Housing

Code	Ports	Aluminum heavy duty	Aluminum standard duty
0	No housing		
3B	3/8" BSP		02-173358
6T	#6 SAE		566162
2G	1/4" BSP	876702	
3G	3/8" BSP	876714	
6H	#6 SAE	876704	
8H	#8 SAE	876711	

\* Aluminum bodies are to be used for pressures less than 210 bar [3000 psi].

\* Additional housings available

### DIMENSIONS

