

Proportional Valves

PFR24A

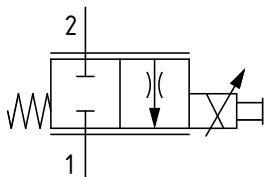
Proportional Flow Control Valve, Spool Type, Normally Closed, Direct Acting, Pressure Compensated

210 bar [3000 psi] • 28 l/min [7.4 US gpm]

DESCRIPTION AND OPERATION

This is a 2-way, spool type, normally closed, pressure compensated proportional flow control valve. In the de-energized condition, the valve is closed in both directions. Energizing the coil will open the valve proportionally between port 2 and port 1, controlling the flow regardless of changes in differential pressure. The valve also provides some compensation when flow takes place from port 1 to 2.

SCHEMATIC



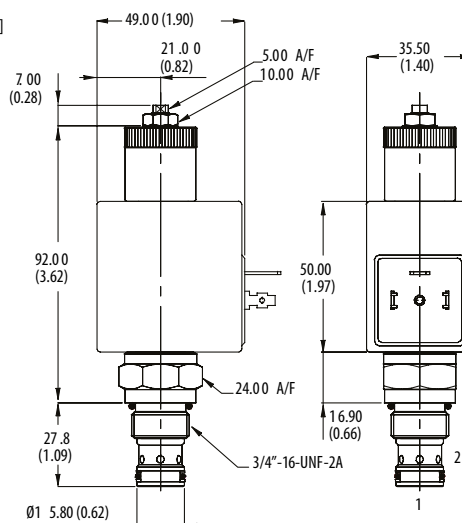
PERFORMANCE DATA

Rated pressure	210 bar [3000 psi]
Max Regulated Flow	28 l/min [7.4 US gpm]
Leakage	200 ml/min@ 210 bar [3000 psi]
Maximum Hysteresis	4%
Recommended PWM frequency	200 Hz
Threshold current	25-30% of rated current
Coil Options	C16
Weight	0.2 kg [0.44 lb]
Cavity	A6701

DIMENSIONS

mm [in]

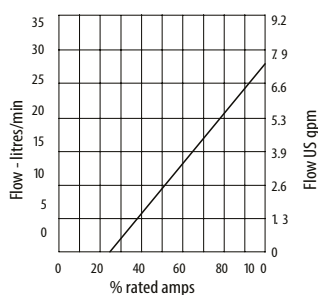
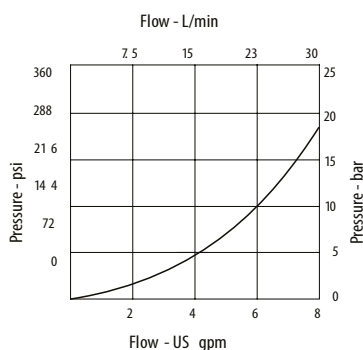
Coil Not Torque
3.4 Nm [2.5 ft lbs]



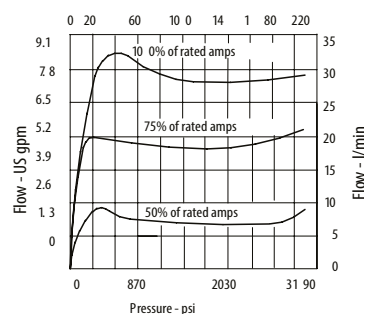
Installation torque
A - 30 Nm (22 lbs ft)

PERFORMANCE CURVES

Pressure drop curves



Pressure differential - bar



MODEL CODE

PFR24A - N - 6 - H - 24 - 3W

Seal Option

Code	Seal kit	Manual Override Option
N - Nitrile	SK1138	6 - Screw Type
V - Viton	SK1138V	

Connector Type

Omit - No coil	Coil Voltage
H - DIN 43650	Omit - No coil
F - Flying Lead	12 - 12 VDC
DM - Deutsch moulded	24 - 24 VDC

Housing

Code	Ports	Aluminium
Omit		No housing
2W	1/4" BSP	A12592
3W	3/8" BSP	A7450
6T	3/8" SAE	A19355

* Aluminum bodies are to be used for pressures less than 210 bar [3000 psi].

* Additional housings available