

Proportional Valves

PPR09-POD

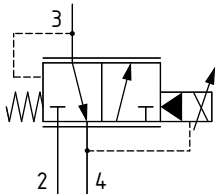
Proportional Pressure Reducing, Relieving, Pilot Operated, Normally Open to Drain

50 bar [725 psi] • 25 l/min [6.6 US gpm]

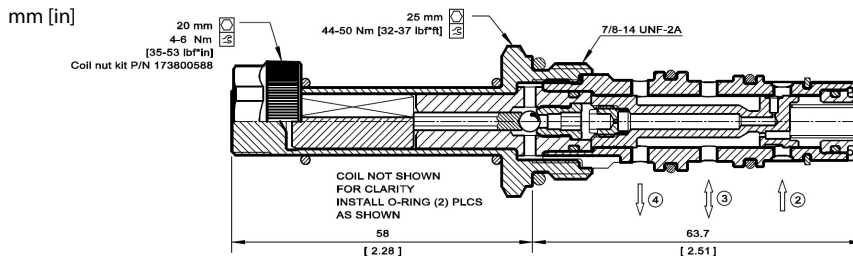
DESCRIPTION AND OPERATION

This is a pilot operated, proportional pressure reducing / relieving valve. In the de-energized condition, the inlet port 2 is blocked, while the reduced pressure in port 3 will be at the minimum setting and open to the tank port 4. By energizing the coil, the pressure in port 3 will increase proportionally to the current applied. Flow through port 2 to 3 is restricted to limit the pressure in port 3. In the case of over pressurization in port 3, the spool will open port 3 to port 4, which acts as a relief valve to limit the pressure in port 3. These valves are ideal for clutch control or as pilot valves for large directional control valves.

SCHEMATIC



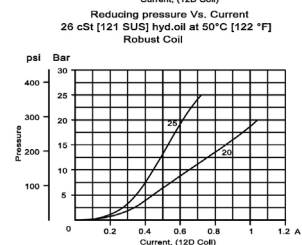
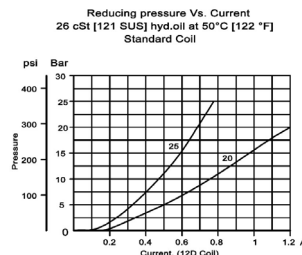
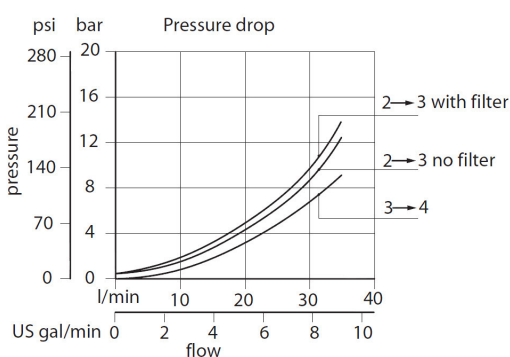
DIMENSIONS



PERFORMANCE DATA

Rated pressure	50 bar [725 psi]
Rated flow @ 7 bar [100 psi]	25 l/min [6.6 US gpm]
Maximum Hysteresis	6%
Threshold current	0.15 A [12 VDC coil] 0.08 A [24 VDC coil]
Maximum control current	1.2 A [12 VDC coil] 0.6 A [24 VDC coil]
Coil Options	M13, R13
Weight	0.34 kg [0.75 lb]
Cavity	SDC10-4

PERFORMANCE CURVES



MODEL CODE

PPR09 - POD - 25 - 12D - DN - V - F - 00

Max Pressure Option

Code	Pressure Range
20	0-20 bar (0-290 psi)
25	0-25 bar (0-360 psi)

Coil Voltage

Standard Coil Code	Robust Coil Code	Coil Voltage
00	R00	No Coil, nut included*
12D	R12D	12 VDC
24D	R24D	24 VDC

*Standard Coil - Plastic coil nut and o-rings (p/n 173800588)

*Robust Coil - Steel coil nut and no o-rings (p/n 173800539)

Connector Type

Standard Coil Code	Robust Coil Code	Connector Type
00	R00	No Coil
AJ		Amp Junior
AS	AS	AMP SuperSeal 1.5
DE	DE	Deutsch
FL	FL	Flying Leads
DN		DIN 43650

Housing

Code	Ports & Material	Housing Model Code
00	No housing	
6S	AL, #6 SAE	CP10-4-6S
8S	AL, #8 SAE	CP10-4-8S
L3B	AL, 3/8 BSP	SDC10-4-L3B
L4B	AL, 1/2 BSP	SDC10-4-L4B

* Aluminum bodies are to be used for pressures less than 210 bar [3000 psi].

* Additional housings available

Filter Option

00 - No Filter
F - Filter, 300 um

Seal Option

Code	Seal kit
B - Buna - N	230000760
V - Viton	230001030