

# Proportional Valves

## PPR10-PAC

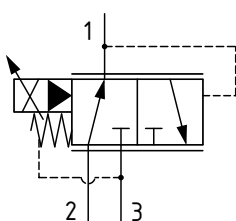
Proportional Pressure Reducing, Relieving, Pilot Operated

250 bar [3600 psi] • 38 l/min [10 US gpm]

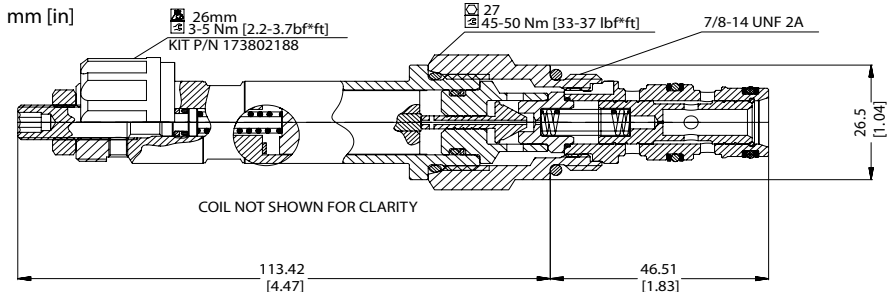
### DESCRIPTION AND OPERATION

This is a pilot operated, proportional pressure reducing / relieving valve. In the de-energized condition, the inlet port 2 is blocked, while the reduced pressure in port 1 will be at the maximum setting. By energizing the coil, the pressure in port 1 will decrease proportionally to the current applied. Flow through port 2 to 1 is restricted to limit the pressure in port 1. In the case of over pressurization in port 1, the spool will open port 1 to port 3, which acts as a relief valve to limit the pressure in port 1.

### SCHEMATIC



### DIMENSIONS

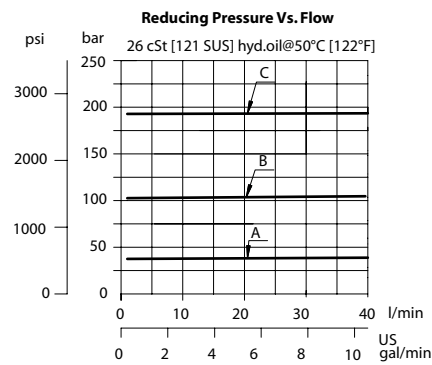
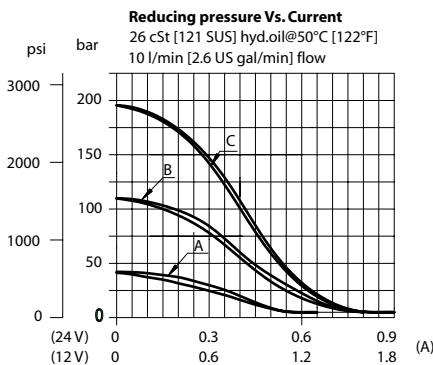


### PERFORMANCE DATA

Rated pressure*	250 bar [3600 psi]
Rated flow	38 l/min [10 US gpm]
Maximum Hysteresis	10%
Threshold current	0 A [12 VDC coil] 0 A [24 VDC coil]
Maximum control current	1.4 A [12 VDC coil] 0.7 A [24 VDC coil]
Coil Options	M19P
Weight	0.62 kg [1.37 lb]
Cavity	SDC10-3

\*Rated pressure based on NFPA fatigue test standards (at 1 million cycles)

### PERFORMANCE CURVES



### MODEL CODE

**PPR10 - PAC - 40 - A - 12D - DN - B - 00**

#### Max Pressure Setting

Code - Pressure setting in bar (5 bar increments within specified Pressure Range)  
Example:

Code	Bar	Psi
60	60	[870]

#### Pressure Range

Code	Pressure Range
A*	20-60 bar [290-870 psi] Standard Setting 40 bar [580 psi]
B	70-150 bar [1015-2175 psi] Standard Setting 100 bar [1960 psi]
C	160-210 bar [2320-3000 psi] Standard Setting 200 bar [2900 psi]

\*Max inlet pressure = 150 bar [2175 psi]

#### Coil Voltage

00 - No coil, nut included\*  
12D - 12 VDC  
24D - 24 VDC

\*Plastic coil nut and o-rings (p/n 173802188)

#### Housing

Code	Ports & Material	Housing Model Code
00	No housing	
6S	AL, #6 SAE	CP10-3-6S
8S	AL, #8 SAE	CP10-3-8S
SE3B	AL, 3/8" BSP	SDC10-3-SE3B
SE4B	AL, 1/2" BSP	SDC10-3-SE4B

\* Aluminum bodies are to be used for pressures less than 210 bar [3000 psi].  
\* Additional housings available

#### Seal Option

Code	Seal kit
B - Buna - N	354004210
V - Viton	354003719

#### Connector Type

00 - No coil  
AJ - AMP Jr  
DE - Deutsch  
DN - DIN 43650 (ISO 4400)  
FL - Lead wires