

Proportional Valves

PRV08-DAC

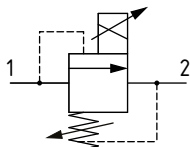
Proportional Relief Valve, Poppet Type, Direct Acting, Normally Closed

215 bar [3100 psi] • 3.8 l/min [1 US gpm]

DESCRIPTION AND OPERATION

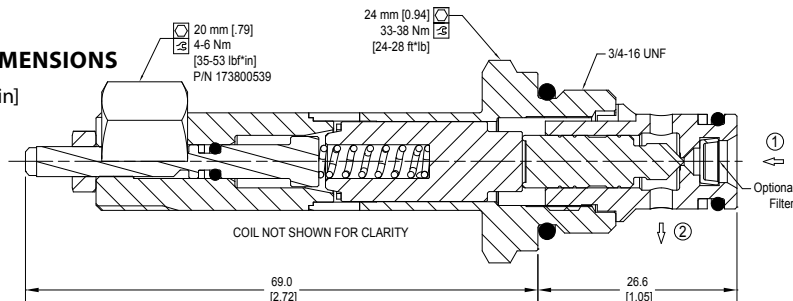
This is a direct acting, poppet type, normally closed, proportional relief valve. In the de-energized condition, the pressure setting will be at a maximum. As current is applied to the coil, the pressure setting of the valve will decrease proportionally. This valve is ideal for use as a pilot valve to control larger logic elements.

SCHEMATIC



DIMENSIONS

mm [in]



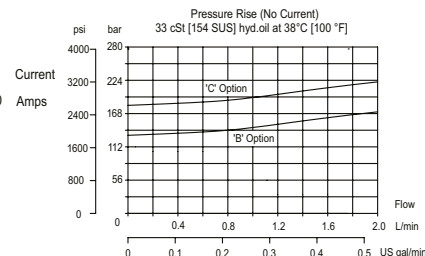
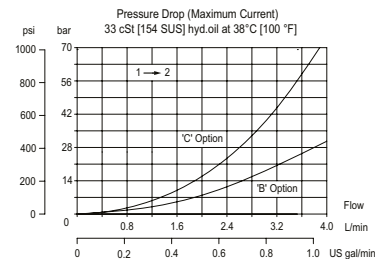
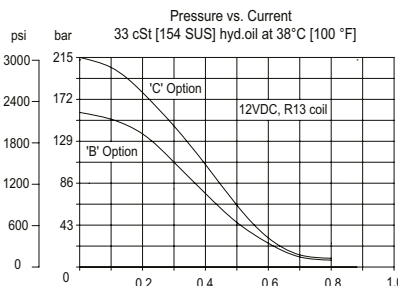
*Adjustment nut torque
4 Nm [36 in lbs]

PERFORMANCE DATA

| | |
|---------------------------|---|
| Rated pressure* | 215 bar [3100 psi] |
| Rated flow | 3.8 l/min [1 US gpm] |
| Max recommended flow | 155 bar option: 3.78 l/min [1.0 US gal/min] 215 bar option: 2.84 l/min [0.75 US gal/min] |
| Recommended PWM frequency | 50 Hz |
| Maximum Hysteresis | 5% |
| Threshold current | 0 A [12 VDC coil] 0 A [24 VDC coil] |
| Maximum control current | 0.8 A [12 VDC coil] 0.4 A [24 VDC coil] |
| Coil Options | M13, R13 |
| Weight | 0.1 kg [0.23 lb] |
| Cavity | SDC08-2 |

*Rated pressure based on NFPA fatigue test standards (at 1 million cycles)

PERFORMANCE CURVES



MODEL CODE

PRV08 - DAC - 215 - C - E - 12D - AJ - V - F - S6S

Max Pressure Setting

Code - Pressure setting in bar
(5 bar increments within specified Pressure Range)
Example:

| Code | Bar | Psi |
|------|-----|-------|
| 65 | 65 | [940] |

Pressure Range

| Code | Pressure Range |
|------|-----------------------------|
| B | 65-155 bar [940-2250 psi] |
| C | 155-215 bar [2250-3100 psi] |

Adjustment Option

E - External

Coil Voltage

| Standard Coil Code | Robust Coil Code | Coil Voltage |
|--------------------|------------------|------------------------|
| 00 | R00 | No Coil, nut included* |
| 12D | R12D | 12 VDC |
| 24D | R24D | 24 VDC |

*Standard Coil - Plastic coil nut and o-rings (p/n 173800588)

*Robust Coil - Steel coil nut and no o-rings (p/n 173800539)

Connector Type

| Standard Coil Code | Robust Coil Code | Connector Type |
|--------------------|------------------|-------------------|
| 00 | R00 | No Coil |
| AJ | | Amp Junior |
| AS | AS | AMP SuperSeal 1.5 |
| DE | DE | Deutsch |
| FL | FL | Flying Leads |
| DN | | DIN 43650 |

Housing

| Code | Ports & Material | Housing Model Code |
|------|------------------|--------------------|
| 00 | No housing | |
| 4S | #4 SAE, AL | CP08-2-4S |
| 6S | #6 SAE, AL | CP08-2-6S |
| DG2B | 1/4 BSP, AL | SDC08-2-DG2B |
| DG3B | 3/8 BSP, AL | SDC08-2-DG3B |
| S4S | #4 SAE, DUCTILE | CP08-2-S4S |
| S6S | #6 SAE, DUCTILE | CP08-2-S6S |

* Aluminum bodies are to be used for pressures less than 210 bar [3000 psi].

* Additional housings available

Filter Option

F - Filter
Omit - No Filter

Seal Option

| Code | Seal kit |
|--------------|----------|
| B - Buna - N | 11191986 |
| V - Viton | 11191987 |