

# Proportional Valves

## PSV12-NO

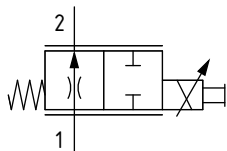
Proportional Flow Control Valve, Spool Type, Normally Open, Direct Acting, Non-Compensated

260 bar [3800 psi] • 100 l/min [26 US gpm]

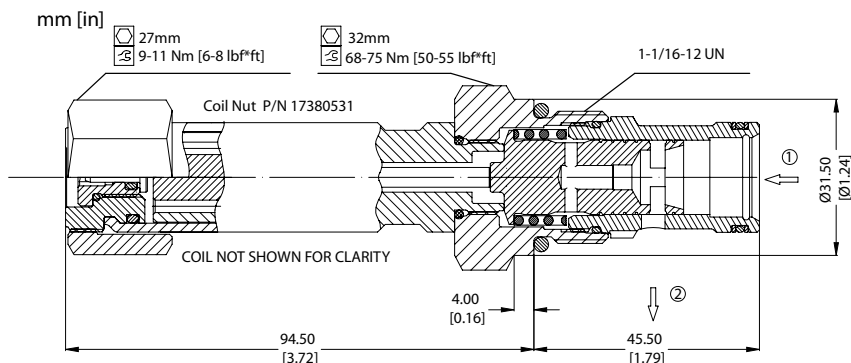
### DESCRIPTION AND OPERATION

This is a 2-way, spool type, normally open, non-compensated proportional flow control valve. In the de-energized condition, flow can pass in either direction. Energizing the coil will proportionally close port 1 to 2. Used in conjunction with a compensator, the valve will act as the control orifice for a pressure compensated flow regulator.

### SCHEMATIC



### DIMENSIONS

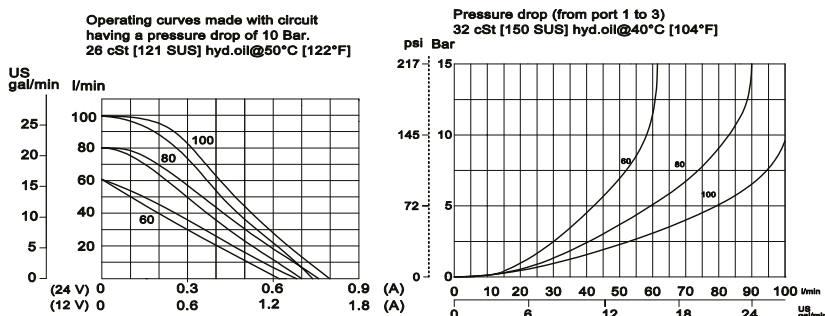


### PERFORMANCE DATA

Rated pressure*	260 bar [3800 psi]
Rated flow @10 bar [145 psi]	100 l/min [26 US gpm]
Leakage	420 ml/min [25.6 in <sup>3</sup> /min] @rated pressure
Maximum Hysteresis	5%
Threshold current	0.3 A [12 VDC coil] 0.15 A [24 VDC coil]
Maximum control current	1.8 A [12 VDC coil] 0.9 A [24 VDC coil]
Coil Options	D14E [35 Watt]
Weight	0.76 kg [1.68 lb]
Cavity	SDC12-2

\*Rated pressure based on NFPA fatigue test standards (at 1 million cycles)

### PERFORMANCE CURVES



### MODEL CODE

#### PSV12 - NO - 100 - 12D - DE - SPS - B - 10S

##### Rated flow at 10 bar [145 psi]

Code	Flow
60	60 l/min [16 US gpm]
80	80 l/min [21 US gpm]
100	100 l/min [26 US gpm]

##### Coil Voltage

00 - No coil, nut included  
12D - 12 VDC  
24D - 24 VDC

\*Aluminum coil nut (p/n 17380531)

##### Connector Type

00 - No coil  
AJ - AMP Junior  
DE - Deutsch  
DN - DIN 43650

##### Manual Override Option

Omit - Push Pin  
SPS - Screw Type

##### Housing

Code	Ports & Material	Housing Model Code
Omit	No housing	
10S	AL, #10 SAE	CP12-2-10S
12S	AL, #12 SAE	CP12-2-12S
DG4B	AL, 1/2 BSP	SDC12-2-DG4B
DG6B	AL, 3/8 BSP	SDC12-2-DG6B

\* Aluminum bodies are to be used for pressures less than 210 bar [3000 psi].

\* Additional housings available

##### Seal Option

Code	Seal kit
B - Buna - N	354008319
V - Viton	354008419