

Proportional Valves

PSV16-NC

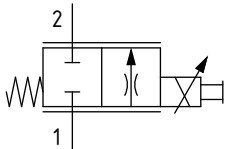
Proportional Flow Control Valve, Spool Type, Normally Closed, Direct Acting, Non-Compensated

260 bar [3800 psi] • 100 l/min [26 US gpm]

DESCRIPTION AND OPERATION

This is a 2-way, spool type, normally closed, non-compensated proportional flow control valve. In the de-energized condition, flow is blocked in both directions. Energizing the coil will proportionally open port 1 to 2. Used in conjunction with a compensator, the valve will act as the control orifice for a pressure compensated flow regulator.

SCHEMATIC

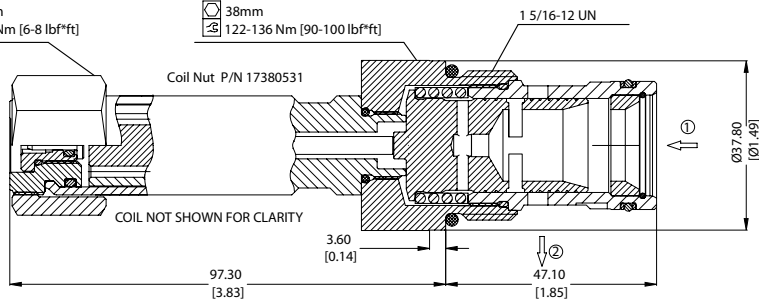


DIMENSIONS

mm [in]

27mm
9-11 Nm [6-8 lbf*ft]

38mm
122-136 Nm [90-100 lbf*ft]

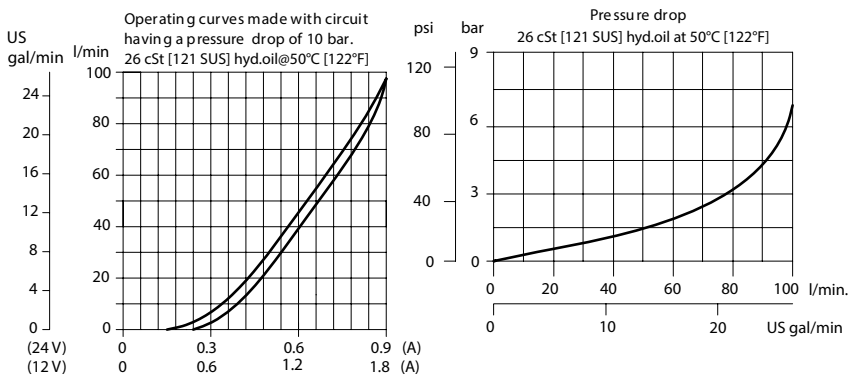


PERFORMANCE DATA

Rated pressure*	260 bar [3800 psi]
Rated flow @ 10 bar [145 psi]	100 l/min [26 US gpm]
Leakage	420 ml/min [25.6 in ³ /min] @ rated pressure
Maximum Hysteresis	5%
Threshold current	0.5 A [12 VDC coil] 0.25 A [24 VDC coil]
Maximum control current	1.8 A [12 VDC coil] 0.9 A [24 VDC coil]
Coil Options	D14E [35 Watt]
Weight	0.87 kg [1.92 lb]
Cavity	SDC16-2

*Rated pressure based on NFPA fatigue test standards (at 1 million cycles)

PERFORMANCE CURVES



MODEL CODE

PSV16 - NC - 100 - 12D - DN - SPS - B - 12S

Rated Flow at 10 bar [145 psi]

Code	Flow
100	100 l/min [26 US gpm]

Coil Voltage

00 - No coil, nut included
12D - 12 VDC
24D - 24 VDC

*Aluminum coil nut (p/n 17380531)

Connector Type

00 - No coil
AJ - AMP Junior
DE - Deutsch
DN - DIN 43650

Manual Override Option

Omit - Push Pin
SPS - Screw Type

Housing

Code	Ports & Material	Housing Model Code
00	No Housing	
DG6B	AL, 3/4 BSP	SDC16-2-DG-6B
DG8B	AL, #1 BSP	SDC16-2-DG-8B
12S	AL, #12 SAE	CP16-2-12S
16S	AL, #16 SAE	CP16-2-16S

* Aluminum bodies are to be used for pressures less than 210 bar [3000 psi].

* Additional housings available

Seal Option

Code	Seal kit
B - Buna - N	354008719
V - Viton	354008819