

# Proportional Valves

## XRP 06

Proportional Pressure Reducing, Relieving, Pilot Operated

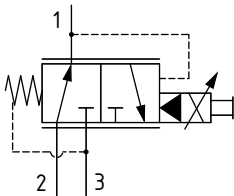
315 bar [4600 psi] • 25 l/min [6.6 US gpm]



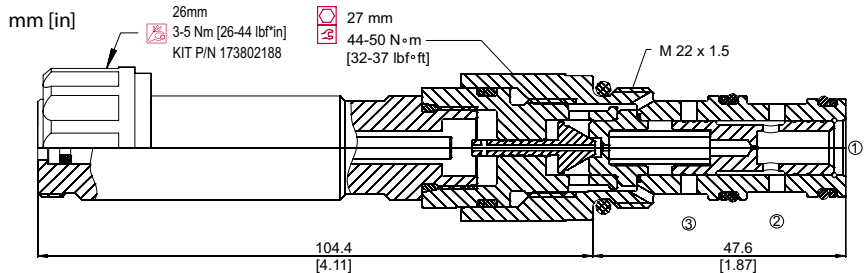
### DESCRIPTION AND OPERATION

This is a pilot operated, proportional pressure reducing / relieving valve. In the de-energized condition, the inlet port 2 is open to the reduced port 1, which will be at the minimum setting. By energizing the coil, the pressure in port 1 will increase proportionally to the current applied. Flow through port 2 to 1 is restricted to limit the pressure in port 1. In the case of over pressurization in port 1, the spool will open port 1 to port 3, which acts as a relief valve to limit the pressure in port 1.

### SCHEMATIC



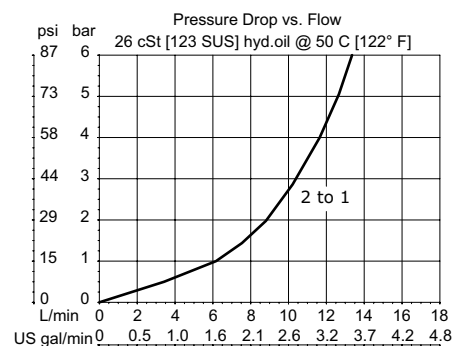
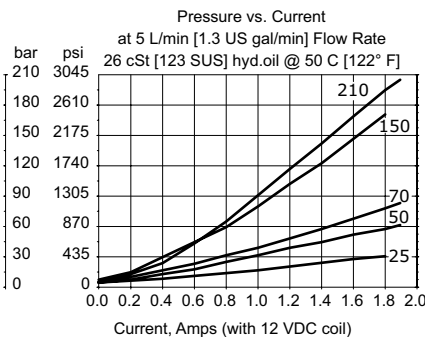
### DIMENSIONS



### PERFORMANCE DATA

Rated pressure	315 bar [4600 psi]
Rated flow	25 l/min [6.6 US gpm]
Maximum Hysteresis	3%
Threshold current	0 A [12 VDC coil] 0 A [24 VDC coil]
Maximum control current	1.8 A [12 VDC coil] 0.9 A [24 VDC coil]
Coil Options	M19P
Weight	0.55 kg [1.21 lb]
Cavity	NCS 06/3

### PERFORMANCE CURVES



### MODEL CODE

**XRP 06 - 70 - 12D - DE - EN - 00 - V**

#### Max Pressure Option

Code	Pressure Range
25	6-25 bar [90-360 psi]
50	6-55 bar [90-800 psi]
70	5-75 bar [90-1100 psi]
150	8-155 bar [120-2200 psi]
210	9-210 bar [130-3000 psi]

#### Coil Voltage

00 - No coil, nut included\*  
12D - 12 VDC  
24D - 24 VDC

\*Standard Coil - Plastic coil nut and o-rings (p/n 173802188)

#### Connector Type

00 - No connector  
AJ - AMP Jr  
DE - Deutsch  
DN - DIN 43650 (ISO 4400)  
FL - Lead wires

#### Seal Option

Code	Seal kit
V - Viton	230000110
Omit - Buna - N	230000070

#### Housing

Code	Ports & Material	Housing Model Code
00	No Housing	
SE6S	AL, #6 SAE	NCS06/3-SE-6S
SE8S	AL, #8 SAE	NCS06/3-SE-8S
SE3/8	AL, 3/8 BSP	NCS06/3-SE-3/8
SE1/2	AL, 1/2 BSP	NCS06/3-SE-1/2

\* Aluminum bodies are to be used for pressures less than 210 bar [3000 psi].  
\* Additional housings available

#### Manual Override Option

00 - Push pin  
EN - Screw Type