

SC10CLX

LBP/MBP Compressor

R404A/R507

220-240V 50/60Hz

Data Sheet (Replaces CF.54.S2.02)

General

Compressor	SC10CLX
Code number	104L2533
Code number	104L2536

Application

Application	LBP/MBP	
Evaporating temperature range	°C	50Hz: -35 to 5 60Hz: -35 to -5
Voltage range	V/Hz	LBP/MBP: 198 - 254 /50 LBP: 198 - 254 /60
Motor type	CSIR	
Max. ambient temperature	°C	38
Comp. cooling at ambient temp.	32°C	F ₂
	38°C	F ₂

Design

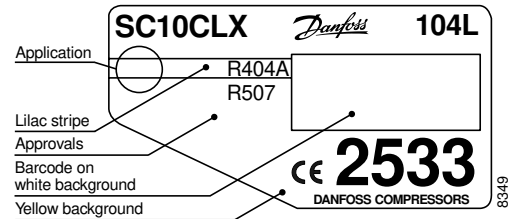
Displacement	cm ³	10.29
Oil quantity	cm ³	550
Maximum refrigerant charge	g	1300
Free gas vol. in compressor	cm ³	1460
Weight without electrical equipment	kg	13.1

Motor

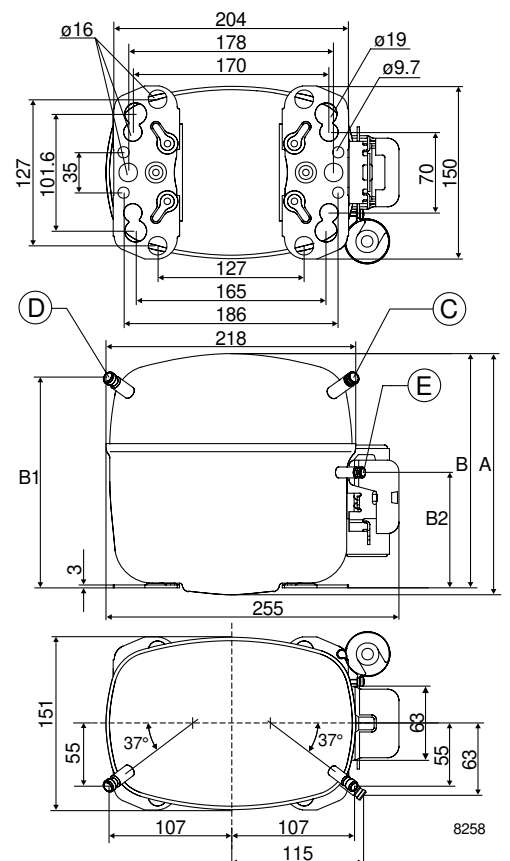
Motor size	watt	385
LRA (rated after 4 sec. UL984) HST	A	14.8
Cut-in current HST	A	14.8
Resistance, main and start winding (25°C)	Ω	5.0/13.7
Approvals	UL984/CSA-C22.2	

Dimensions

		104L2533	104L2536
Height	mm	A	209
		B	203
		B1	183
		B2	100
Suction connector	location/I.D. mm	C 8.2 ±0.09	8.2 ±0.09
Process connector	location/I.D. mm	D 6.2 ±0.09	6.5 ±0.09
Discharge connector	location/I.D. mm	E 6.2 ±0.09	6.5 ±0.09
Compressors on a pallet	pcs.	80	



- S = Static cooling normally sufficient
- O = Oil cooling
- F₁ = Fan cooling 1.5 m/s
(compressor compartment temperature equal to ambient temperature)
- F₂ = Fan cooling 3.0 m/s necessary



Capacity (EN 12900/CECOMAF)

watt

Evap. temp in °C	-35	-30	-25	-23.3	-20	-15	-10	-5	0	5
SC10CLX, 50Hz	166	255	360	400	483	625	789	977	1190	1430
SC10CLX, 60Hz	224	335	455	499	588	738	906	1096		

Capacity (ASHRAE)

watt

Evap. temp in °C	-35	-30	-25	-23.3	-20	-15	-10	-5	0	5
SC10CLX, 50Hz	192	296	418	464	561	727	919	1139	1389	1673
SC10CLX, 60Hz	260	388	528	579	683	857	1054	1277		

Power consumption

watt

Evap. temp in °C	-35	-30	-25	-23.3	-20	-15	-10	-5	0	5
SC10CLX, 50Hz	258	302	352	369	404	457	508	556	597	631
SC10CLX, 60Hz	304	370	430	450	489	552	623	707		

Current consumption

A

Evap. temp in °C	-35	-30	-25	-23.3	-20	-15	-10	-5	0	5
SC10CLX, 50Hz	2.00	2.15	2.32	2.38	2.51	2.72	2.94	3.19	3.45	3.73
SC10CLX, 60Hz	2.19	2.36	2.55	2.62	2.77	3.02	3.30	3.61		

COP (EN 12900/CECOMAF)

W/W

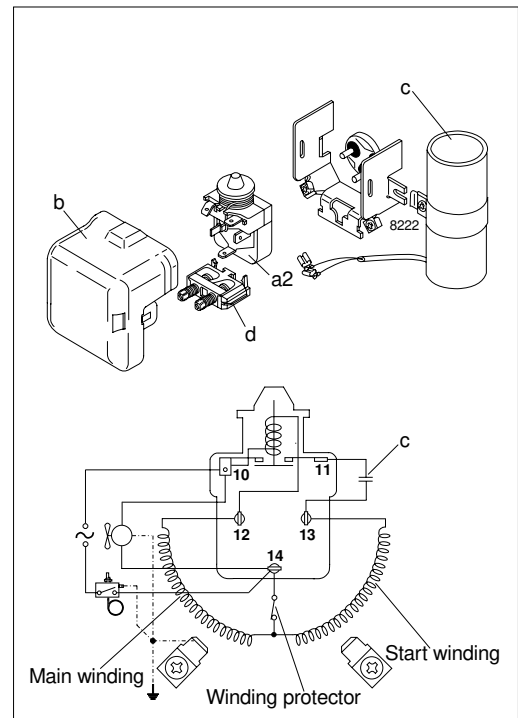
Evap. temp in °C	-35	-30	-25	-23.3	-20	-15	-10	-5	0	5
SC10CLX, 50Hz	0.64	0.84	1.02	1.08	1.20	1.37	1.55	1.76	1.99	2.27
SC10CLX, 60Hz	0.74	0.90	1.06	1.11	1.20	1.34	1.45	1.55		

COP (ASHRAE)

W/W

Evap. temp in °C	-35	-30	-25	-23.3	-20	-15	-10	-5	0	5
SC10CLX, 50Hz	0.75	0.98	1.19	1.26	1.39	1.59	1.81	2.05	2.33	2.65
SC10CLX, 60Hz	0.85	1.05	1.23	1.29	1.40	1.55	1.69	1.81		

Test conditions	EN 12900/CECOMAF	ASHRAE
Condensing temperature	45°C	45°C
Ambient and suction gas temp.	32°C	32°C
Liquid temperature	45°C	32°C
50Hz: Fan cooling $F_{p, 220V}$		
60Hz: Fan cooling $F_{p, 220V}$		



Accessories

Devices	Fig.	SC10CLX
Starting Relay	a2	117U6005
Cover	b	103N2008
Starting capacitor 80 µF	c	117U5019
Cord relief	d	103N1004
Mounting accessories		
Bolt joint for one compressor		118-1917
Bolt joint in quantities		118-1918
Snap-on in quantities		118-1919

Danfoss can accept no responsibility for possible errors in catalogues, brochures and other printed material. Danfoss reserves the right to alter its products without notice. This also applies to products already on order provided that such alterations can be made without subsequential changes being necessary in specifications already agreed. All trademarks in this material are property of the respective companies. Danfoss and the Danfoss logotype are trademarks of Danfoss A/S. All rights reserved.

