

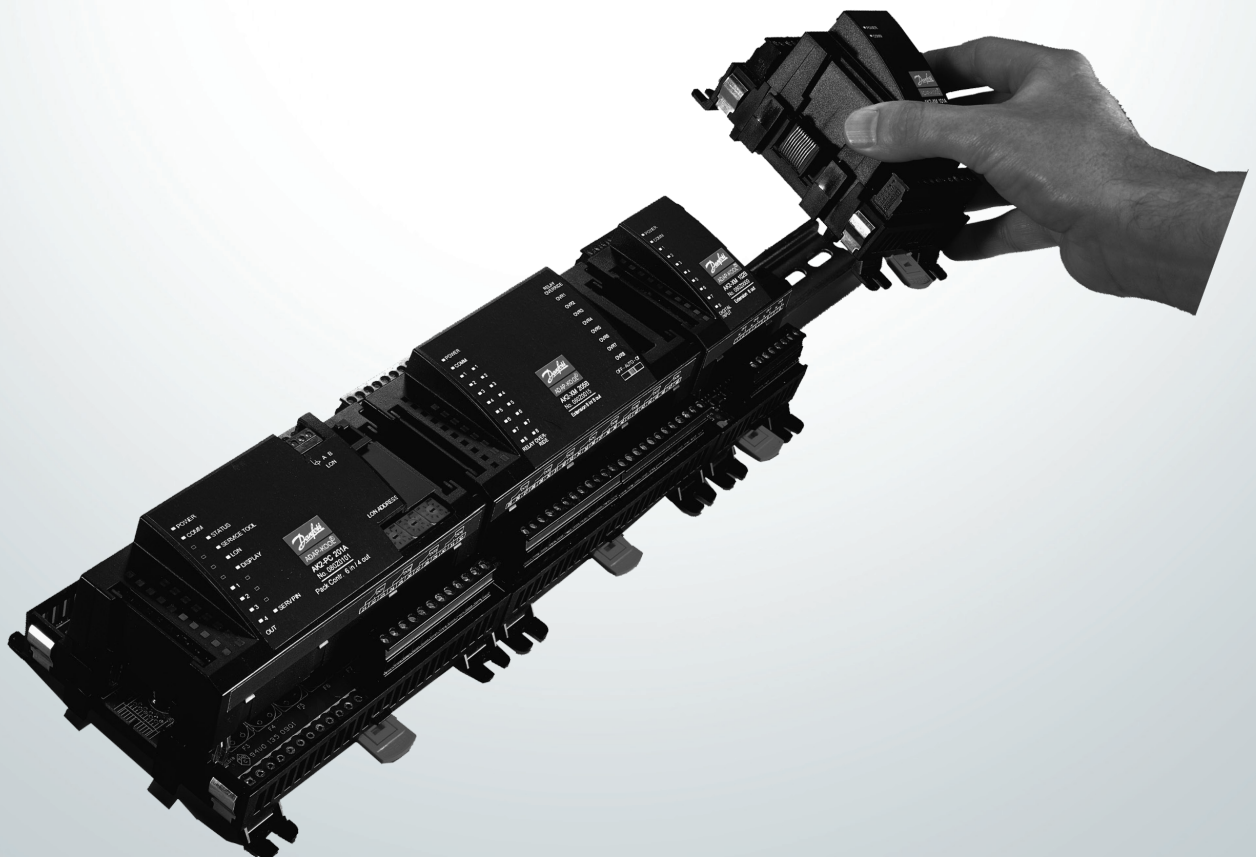
ENGINEERING  
TOMORROW

*Danfoss*

User Guide

# Monitoring unit AK-LM 330

ADAP-KOOL® Refrigeration control systems



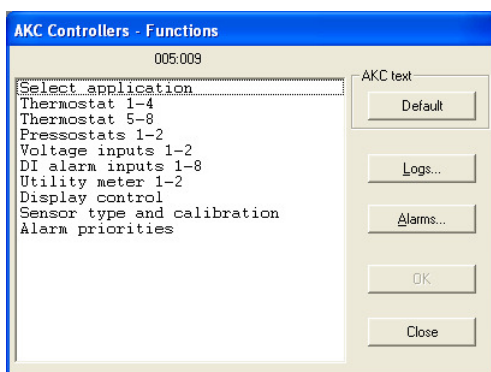
## Menu list

This menu function can be used together with system software type AKM. The description is divided up into function groups that can be displayed on the PC screen. Within each group it is now possible to show the measured values, or settings. Regarding the use of AKM, reference is made to the AKM Manual.

## Validity

**This menu operation (from September 2012) applies to controller type AK-LM 330, code Nos 080Z0170 with programme version 1.4x.**

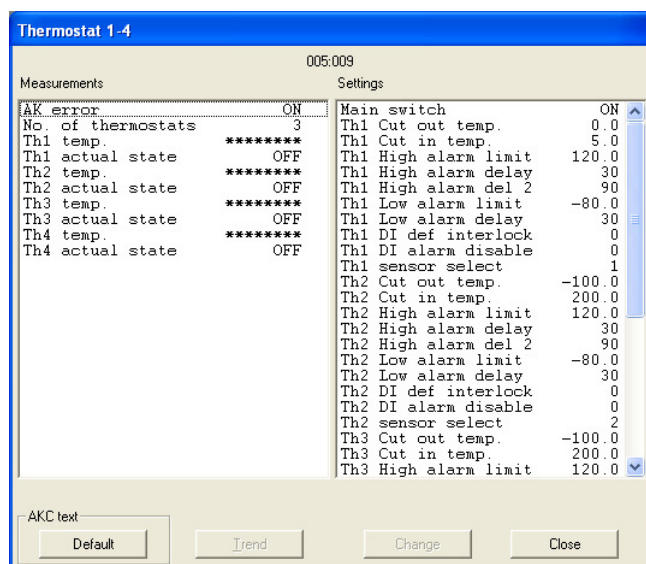
## Function groups



The operation is divided up into several function groups. When a selection has been made, push "OK", and you may continue to the next display. By way of example, "Thermostat 1-4" has been selected here.

From the measure line the different values can be read. The values are constantly updated.

In the list of settings the set values can be seen. If a setting has to be changed, select the parameter and proceed via "OK".



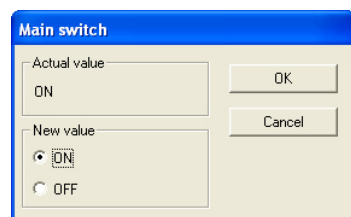
## Measurements

The various measurements can be read directly. If a graphic display of the measurements is required, up to eight of them can be shown. Select the required measurements and push "Trend".

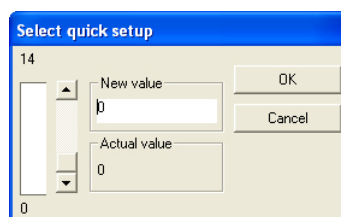
## Settings

Settings can only be made for the daily operation. Configuration settings cannot be seen, changed or written out. They can only be made from the Service Tool programme.

There are four kinds of settings, ON/OFF settings, settings with a variable value, time settings and "reset alarms".



Set the required value and push "OK"



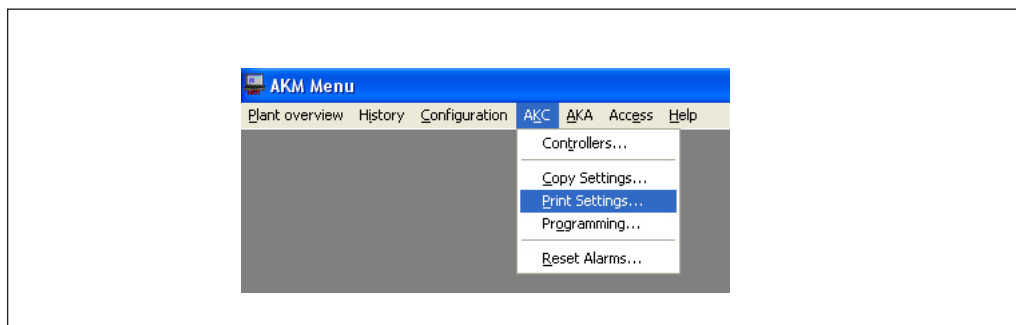
Enter the new value or move the sliding scale up or down. The new value will apply, when "OK" is pushed.

Go through the individual functions one by one and make the required settings. When settings have been made for one controller, the set values may be used as a basis in the other controllers of the same type and with the same software version. Copy the settings by using the copy settings function in the AKM programme, and adjust subsequently any settings where there are deviations.

**NB! If a list is required for noting down the individual settings, a printout can be made of it with a function in the AKM programme. Read the next section, "Documentation".**

## Documentation

Documentation of the settings of the individual controllers can be made with the print function in the AKM programme. Select the controller for which documentation of the settings is required and select the "Print Settings" function (cf. also the AKM Manual).



## Functions

Shown below are function groups with corresponding measurements and settings. A printout of the given settings can be made using the AKM function "Print Settings" (see above).

## Note

It has been necessary to make a selection from the numerous measurements and settings coming from the controller.

There is not room for all these in the AKM programme controls.

It can display:

- 8 thermostats
- 2 pressostats
- 2 volt inputs
- 8 digital alarm inputs
- 2 consumption gauges

If it is necessary to obtain access to all measurements and settings, see Using Service Tool, type AK-ST 500.

## Select application

Measurements	AK error	When "ON", the controller is in alarm condition.
Settings	Main switch	Main switch:           ON:   Regulation OFF:   Controller stopped
	Configuration lock	Locking configuration To implement changes of certain parameters, the configuration lock must be "open". Note: "Main switch" must be turned "OFF" to open configuration 0: Open 1: Locked
	Select quick setup	Selection of predefined configurations. When this is selected, all the controller settings and the definitions of input and output will be adjusted to fit the selected application. (see manual for more details on individual predefined settings).

## Thermostat 1 - 4

Measurements	AK error	When "ON", the controller is in alarm condition.
	No. of thermostats	The number of thermostats that have been defined can be read here. <b>1 to 8 can be read and operated in the following menus.</b> <b>9 or more can only be read and operated from the Service Tool AK-ST</b>
	Th1 temp. Th 1 actual state	Temperature Measurements on the sensor defined in "Thermostat 1" The thermostat's actual value is shown here. ON or OFF.
Settings	2, 3, 4	There are similar settings for the other thermostats.
	Main switch	Main switch:           ON:   Regulation OFF:   Controller stopped
	Th1 Cut out temp	Cut out value for relay which is defined in "Thermostat 1"
	Th1 Cut in temp	Cut in value for relay which is defined in "Thermostat 1"
	Th1 High alarm limit	High alarm limit "Thermostat 1"
	Th1 High alarm delay	Delay time for high alarm "Thermostat 1" (normal regulation)
	Th1 High alarm del 2	Delay time 2 for high alarm "Thermostat 1" (e.g. after a defrost / cooling down)
	Th1 Low alarm limit	Low alarm limit "Thermostat 1"
	Th1 Low alarm delay	Delay time for low alarm "Thermostat 1"
	Th1 DI def interlock	Definition of switch to "Delay time 2" with DI signal 0: not used 1-16: Here, it is defined which DI input is to activate the long delay time.
	Th1 DI alarm disable	Definition of disarming alarm with DI signal 0: Not used 1-16: Here, the DI input that is to deactivate the alarm function is defined
	Th1 Sensor select	Here, the sensor that is to be used for "Thermostat 1" is defined
	2, 3, 4	There are similar settings for the other thermostats.

## Thermostat 5 - 8

Measurements	AK error	When "ON", the controller is in alarm condition.
	5, 6, 7, 8	Same function as for "Thermostat 1".
Settings	Main switch	Main switch:           ON:   Regulation OFF:   Controller stopped
	5, 6, 7, 8	Same function as for "Thermostat 1".

## Pressostats 1 - 2

Measurements	AK error	When "ON", the controller is in alarm condition.
	No. of pressostats	The number of pressostats that have been defined can be read here. <b>1 to 2 can be read and operated in the following menus.</b> <b>3 or more can only be read and operated from the Service Tool AK-ST 500.</b>
	P1 pressure. P1 actual state	Pressure reading for the transmitter defined in "Pressostat 1" The pressostat's actual value is shown here. ON or OFF.
	2	There are similar readings for "Pressostat 2".
Settings	Main switch	Main switch:           ON:   Regulation OFF:   Controller stopped
	P1 Cut out pressure P1 Cut in pressure P1 High alarm limit P1 High alarm delay P1 Low alarm limit P1 Low alarm delay P1 Sensor select	Cut out value for relay "Pressostat 1" Cut in value for relay "Pressostat 1" High alarm limit "Pressostat 1" Delay time for high alarm "Pressostat 1" Low alarm limit "Pressostat 1" Delay time for low alarm "Pressostat 1" The transmitter that is to send the signal to "Pressostat 1" is defined here.
	2	There are similar settings for "Pressostat 2".

## Voltage inputs

Measurements	AK error	When "ON", the controller is in alarm condition.
	No. of voltage input	The number of voltage functions that have been defined can be read here. <b>1 to 2 can be read and operated in the following menus.</b> <b>3 or more can only be read and operated from the Service Tool AK-ST 500.</b>
	V1 value V1 actual state	The voltage measurement for the function defined in "Volt 1" The function's actual value is shown here. ON or OFF.
	2	There are similar readings for "Volt 2".
Settings	Main switch	Main switch:           ON:   Regulation OFF:   Controller stopped
	V1 Cut out V1 Cut out delay V1 Cut in V1 Cut in delay V1 High alarm limit V1 High alarm delay V1 Low alarm limit V1 Low alarm delay V1 Volt signal type	Cut out value for relay which is defined in "Volt 1" Delay time for cut out of relay Cut in value for relay which is defined in "Volt 1" Delay time for cut in of relay High alarm limit "Volt 1" Delay time for high alarm "Volt 1" Low alarm limit "Volt 1" Delay time for low alarm "Volt 1" The voltage area that is to send the signal to "Volt 1" is defined here. 0-5 V: Defined with setting = 9 1-5 V: Defined with setting = 11 0-10 V: Defined with setting = 10 2-10 V: Defined with setting = 12 (The received voltage is converted to a value which is defined by the following: Lower voltage value = Min. read out. Higher voltage value = Max. read out. It is these limits that form the function's setting values)
	V1 Min read out V1 Max read out	Definition of the reading at the voltage area's lowest value Definition of the reading at the voltage area's highest value.
	2	There are similar settings for "Volt 2".

## DI alarm inputs 1-8

Measurements	AK error	When "ON", the controller is in alarm condition.
	No of DI input	The number of DI inputs that have been defined can be read here. <b>1 to 8 can be read and operated in the following menus.</b> <b>9 or more can only be read and operated from the Service Tool AK-ST 500.</b>
	DI1 status	The signal's actual value for DI1 is shown here. On or Off (On = alarm)
	DI1 No. of cycles/24h	The number of signals that have been changed to "On" within the last 24 hours can be read here.
	DI1 On time/24h	The amount of time during which the signal has been "On" within the last 24 hours (shown in %) can be read here.
Settings	2, 3, 4, 5, 6, 7,8	There are similar readings for the other DI inputs.
	Main switch	Main switch:           ON:   Regulation OFF:   Controller stopped
	DI1 alarm fct.	When "On", the DI1 alarm function is active.
	DI1 alarm delay	Delay time for alarm "DI 1"
	DI1 Input polarity	The input signal's normal situation and alarm situation is defined here On: Alarm, when the signal to the input is connected (short circuit/volt supply) Off: Alarm, when the signal to the input is cut off
	DI1 Total no. of cyc.	Readings for the total number of changes to "On". The value can be reset
	DI1 Total ON time	Readings for total On time. The value can be reset
	2, 3, 4, 5, 6, 7,8	There are similar settings for the other DI inputs.

## Utility meter 1-2

Measurements	AK error	When "ON", the controller is in alarm condition.
	No. of util meters	Here, it is possible to read how many power reading functions have been defined. <b>1 to 2 can be read and operated in the following menus.</b> <b>3 or more can only be read and operated from the Service Tool AK-ST 500.</b>
	UM1 Total consump.	Readings for the total consumption registered by "Utility Meter 1"
	UM1 Today consump.	Readings for today's consumption registered by "Utility Meter 1"
	UM1 Last week cons.	Readings for last week's consumption registered by "Utility Meter 1"
	UM1 Actual load	Readings for actual load registered by "Utility Meter 1"
	UM1 Average load	Readings for average load registered by "Utility Meter 1"
	2	There are similar readings for "Utility Meter 2".
Settings	Main switch	Main switch:           ON:   Regulation OFF:   Controller stopped
	Load period	Set period time for synchronising pulses
	UM1 Start	The measurements can be started and stopped here.
	UM1 Pulses/unit	Define how many pulses are to be received for each unit of measure
	UM1 Scale factor	Set scale factor, if required
	UM1 Preset counter	The counter can be reset here.
	2	There are similar settings for "Utility Meter 2".

## Display control

Measurements	AK error	When "ON", the controller is in alarm condition.
Settings	Main switch  Display control A Display control B Display control C Display control D	Main switch:           ON: Regulation OFF: Controller stopped  Set what should be read in "Display A" Set what should be read in "Display B" Set what should be read in "Display C" Set what should be read in "Display D"  No reading = 0 "Thermostat 1" to be defined with setting = 1 "Thermostat 2" to be defined with setting = 2 "Thermostat 3" to be defined with setting = 3 "Thermostat 4" to be defined with setting = 4 "Thermostat 5" to be defined with setting = 5 "Thermostat 6" to be defined with setting = 6 "Thermostat 7" to be defined with setting = 7 "Thermostat 8" to be defined with setting = 8 "Thermostat 9" to be defined with setting = 9 "Thermostat 10" to be defined with setting = 10 "Pressostat 1" to be defined with setting = 11 "Pressostat 2" to be defined with setting = 12 "Pressostat 3" to be defined with setting = 13 "Pressostat 4" to be defined with setting = 14 "Pressostat 5" to be defined with setting = 15 "DI1 Alarm" to be defined with setting = 16 "DI2 Alarm" to be defined with setting = 17 "DI3 Alarm" to be defined with setting = 18 "DI4 Alarm" to be defined with setting = 19 "DI5 Alarm" to be defined with setting = 20 "DI6 Alarm" to be defined with setting = 21 "DI7 Alarm" to be defined with setting = 22 "DI8 Alarm" to be defined with setting = 23 "DI9 Alarm" to be defined with setting = 24 "DI10 Alarm" to be defined with setting = 25 "DI11 Alarm" to be defined with setting = 26 "DI12 Alarm" to be defined with setting = 27 "DI13 Alarm" to be defined with setting = 28 "DI14 Alarm" to be defined with setting = 29 "DI15 Alarm" to be defined with setting = 30 "DI16 Alarm" to be defined with setting = 31

## Sensor type and calibration

Measurements	AK error	When "ON", the controller is in alarm condition.
Settings	Main switch  Saux 1 offset 2,3,4,5,6,7,8  Paux 1 offset Paux 2 offset Saux 1 sensor type  2,3,4,5,6,7,8  Paux 1 sensor type	Main switch:           ON: Regulation OFF: Controller stopped  Correction of the signal from the sensor "Saux 1" if necessary Do for Saux 2,3,4,5,6,7,8  Correction of the signal from the pressure transmitter "Paux 1" if necessary Correction of the signal from the pressure transmitter "Paux 2" if necessary Definition of the sensor type for the input "Saux 1" Pt 1000 ohm defined with setting = 0 PTC 1000 ohm defined with setting = 2 Do for Saux 2,3,4,5,6,7,8  Definition of pressure transmitter type and pressure area for "Paux 1" AKS 32 -6 defined with setting = 1 AKS 32 -9 defined with setting = 4 AKS 32 -12 defined with setting = 7

AKS 32 -20 defined with setting = 10  
 AKS 32 -34 defined with setting = 13  
 AKS 32 -50 defined with setting = 16  
 AKS 32R -6 defined with setting = 2  
 AKS 32R -9 defined with setting = 5  
 AKS 32R -12 defined with setting = 8  
 AKS 32R -20 defined with setting = 11  
 AKS 32R -34 defined with setting = 14  
 AKS 32R -50 defined with setting = 17  
 AKS 2050 -59 defined with setting = 31  
 AKS 2050 -99 defined with setting = 32  
 AKS 2050 -159 defined with setting = 33  
 User-defined defined with setting = 0. + settings via Service Tool.

2 Do for Paux 2.

## Alarm priorities

Measurements	AK error	When "ON", the controller is in alarm condition.
Settings	Main switch	Main switch:      ON: Regulation OFF: Controller stopped  The alarm priority of the following alarms can be changed: High priority is defined with setting = 1 Medium priority is defined with setting = 2 Low priority is defined with setting = 3 Overriding the alarms is defined with setting = 0
	Stand by mode	(Interrupted regulation) See the above introduction
	Saux 1 error 2,3,4,5,6,7,8	See the above introduction As for Saux 1
	Paux 1 error 2,3,4,5,6,7,8	See the above introduction As for Paux 1
	DI1 2,3,4,5,6,7,8	See the above introduction As for DI1
	Th.1 High alarm Th 1 Low alarm 2,3,4,5,6,7,8	See the above introduction See the above introduction As for Th. 1
	P1 Low alarm P1 High alarm 2	See the above introduction See the above introduction As for P1
	V1 High alarm V1 Low alarm 2	See the above introduction See the above introduction As for V1