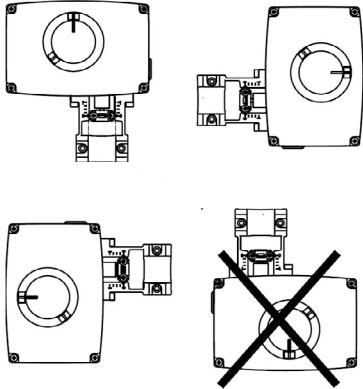


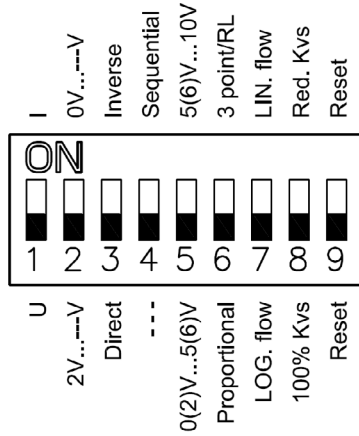
Orientation



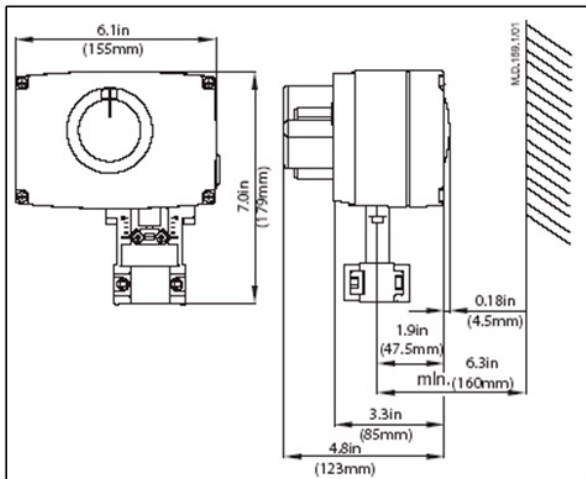
Installation of the valve with the actuator is allowed in a horizontal or pointing in an upwards position. The installation of the actuator pointing down is not allowed.

DIP switches

- **SW 1:** Not used
- **SW 2:** Input signal range selector
 - 0-10 V / 2-10 V
 - 0-20 mA / 4-20 mA
- **SW 3:** Direct or Inverse reaction
 - Valve opens as input signal increases
 - Valve closes as input signal increases
- **SW 4:** Splitting the signal for actuator operation
- **SW 5:** Designation of actuator input signal operation
- **SW 6:** Input signal
 - 3-point Floating
 - Proportional
- **SW 7:** Actuator characteristic
 - Linear or equal-percentage
- **SW 8:** Not used
- **SW 9:** Reset learning of stem travel

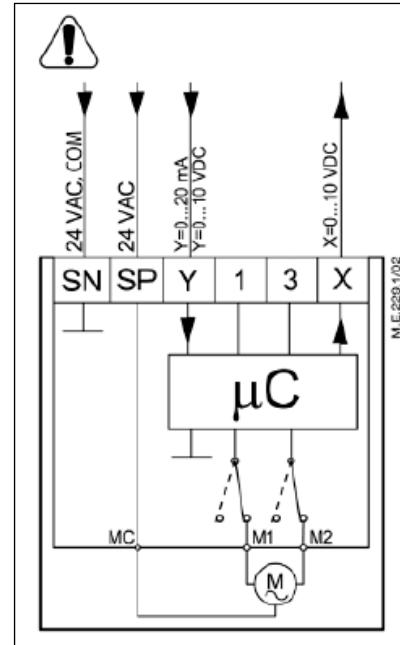


Dimensions

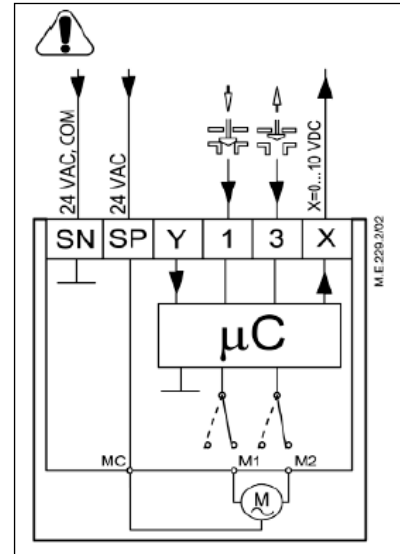


Wiring

Proportional



3-point Floating



- SP** 24 VAC/DC Power supply
- SN** Neutral Common
- Y** 0-10 V Input signal
 (2-10 V)
 0-20 mA
 (4-20 mA)
- X** 0-10 V Output signal
 (2-10 V)
- 1, 3** Override input signal
 (can not be used for 3-point control)