

Solenoid Valves



SLP13-10-O

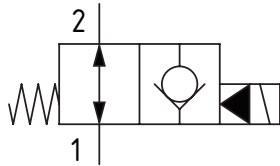
Solenoid Valve, 2-way, Poppet Type, Normally Open, Pilot Operated with Reverse Free Flow

350 bar [5000 psi] • 95 l/min [25 US gpm]

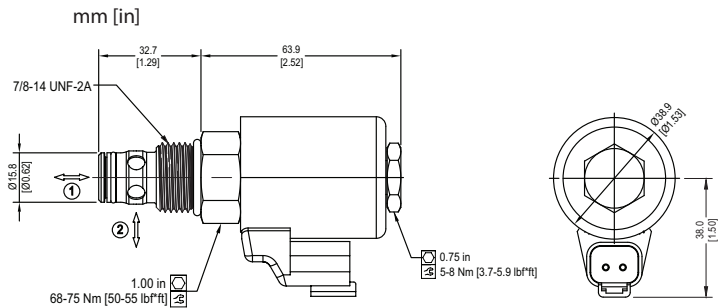
■ OPERATION AND DESCRIPTION

This is a 2-way, 2-position, poppet type, normally open solenoid valve. In its de-energized condition flow can take place from port 2 to 1 and from 1 to 2. When energized, flow can take place from port 1 to 2, but flow is blocked from port 2 to 1 with minimum leakage due to the poppet design. These valves can be used to hold loads in position or to interrupt a pressure line where flow normally passes in both directions. Due to its low power coil and low pressure drop, these valves are suitable for high ambient temperature applications, as space savers in a HIC design, or where reducing power consumption is important.

■ SCHEMATIC



■ DIMENSIONS

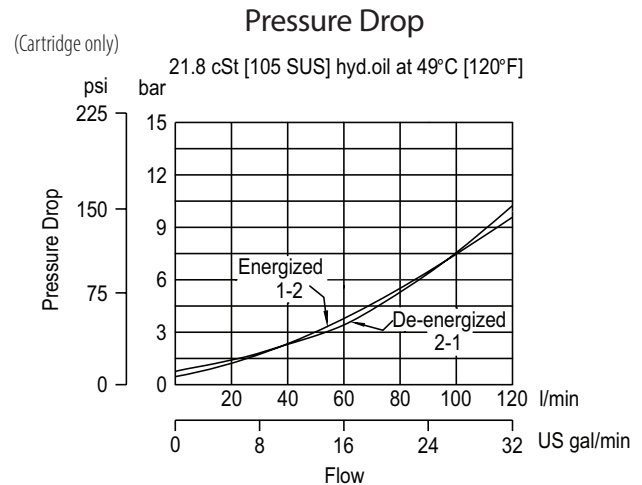


■ PERFORMANCE DATA

Rated pressure*	350 bar [5000 psi]
Rated flow	95 l/min [25 US gpm]
Leakage	10 drops/min @ 350 bar [5000 psi]
Coil Options	K series, 10 W
Weight	0.16 kg [0.35 lb]
Cavity	SDC10-2

*Note: Rated pressure based on NFPA fatigue test standard [at 1 million cycles]

■ PERFORMANCE CURVES



■ MODEL CODE

SLP13 - 10 - V - O - S - 2G - 12D - N - K

Seal Option

Code	Seal Kit
Omit-Buna	565803
V-Viton	566086

Housing Material

Omit - No housing
A - Aluminum
S - Steel

Housing

Code	Ports	Aluminum Standard Duty	Aluminum Heavy Duty	Steel Heavy Duty
0	No Housing			
3B	3/8" BSP	02-175462		
2G	1/4" BSP		876702	02-175102
3G	3/8" BSP		876703	02-175103
6H	#6 SAE		876700	
8H	#8 SAE		876701	
6T	#6 SAE	566151		02-175100
8T	#8 SAE			02-175101

* Aluminum bodies are to be used for pressures less than 210 bar [3000 psi]

* Additional housings available

Coil Series

Omit - No coil
K - K series, 10W

Connector Type

Omit - No coil
N - Deutsch

* Additional connectors available. Contact technical support.

Coil Voltage

00 - No Coil
12D - 12 VDC
24D - 24 VDC