

Shuttle Valves

SH08-R

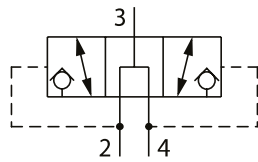
Load Shuttle Valve, Reverse Direction
230 bar [3300 psi] • 5 l/min [1.3 US gpm]



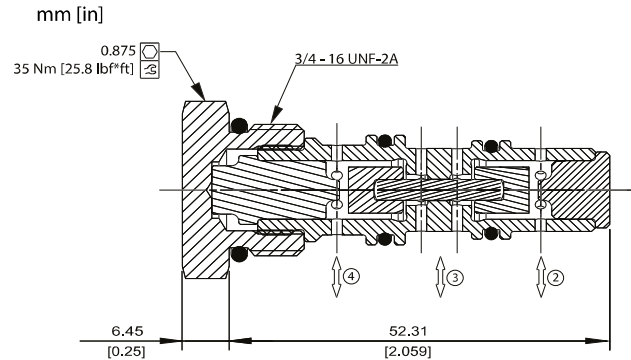
DESCRIPTION AND OPERATION

This valve that senses the lower of two input pressures at 1 and 3 and routes it to the output 2.

SCHEMATIC



DIMENSIONS

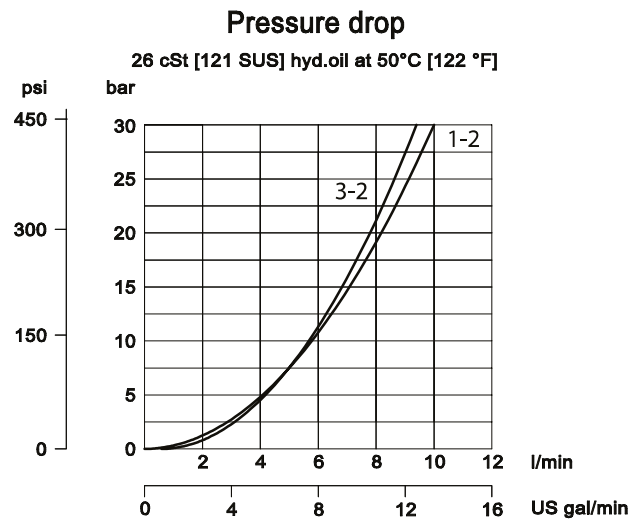


PERFORMANCE DATA

Rated pressure	230 bar [3300 psi]
Rated flow at 7 bar [100psi]	5 l/min [1.3 US gpm]
Leakage	6 drops/min @ Rated pressure
Weight	0.2 kg [0.44 lb]
Cavity	SDC08-4

*Rated pressure based on NFPA fatigue test standard [at 1 million cycles]

PERFORMANCE CURVES



MODEL CODE

SH08 - R - B - 4S

Seal Option

Code	Seal kit
Omit-Buna-N	11362953
V-Viton	11362954

Housing

Code	Ports & Material	Housing Model Code
00	No Housing	
4S	#4 SAE, AL	CP08-4-4S
L2B	1/4 BSP, AL	SDC08-4-L2B

* Aluminum bodies are to be used for pressures less than 210 bar [3000 psi].

* Additional housings available