

Accessories

CP600-5

Hand Pump

207 bar [3000 psi] • 1.2 ml/stroke

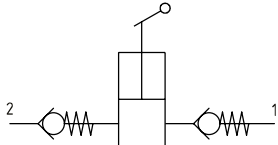


DESCRIPTION AND OPERATION

This is a manually operated, unidirectional hand pump. Activating the valve will force oil out through a check valve and into the system. Retracting the valve will draw oil into the chamber through a second check valve. This hand pump has been designed to be used on machines which require emergency release of brakes or for pilot supply for emergency lowering of access platforms. It can also be utilized in lubrication circuits.

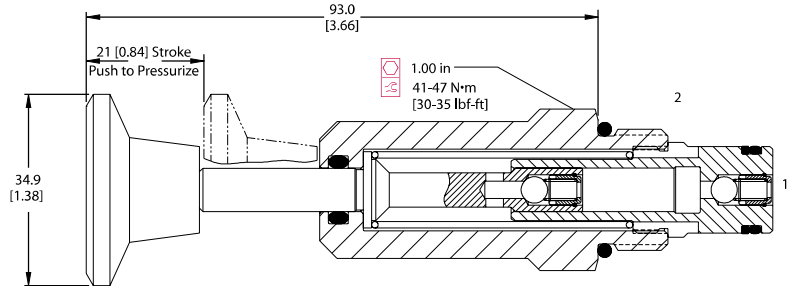
For smooth operation, inlet lines should not be excessively long, and the vertical distance between pump and tank level no more than 300 mm (12 inch).

SCHEMATIC



DIMENSIONS

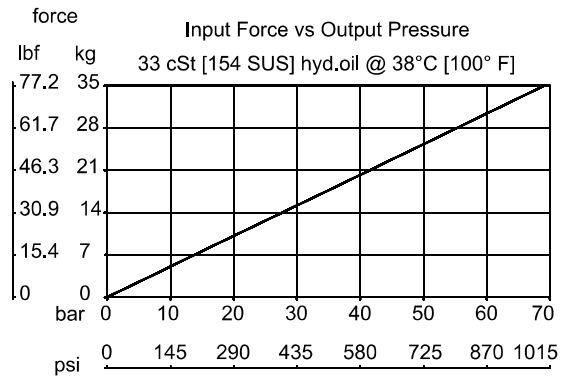
mm [in]



PERFORMANCE DATA

Rated pressure	207 bar [3000 psi]
Displacement	1.2 ml/stroke only
Leakage	6 drops/min @ Rated pressure
Pump force	34N [7.7 lbf]
Weight	0.24 kg [0.52 lbs]
Cavity	SDC10-2

PERFORMANCE CURVES



MODEL CODE

CP600 - 5 - B - 6S

Seal Option

Code	Seal kit
B-Buna-N	120015
V-Viton	120016

Housing

Code	Ports & Material	Housing Model Code
0	No Housing	
6S	AL, #6 SAE	CP10-2-6S
8S	AL, #8 SAE	CP10-2-8S
DG3B	AL, 3/8 BSP	SDC10-2-DG-3B
DG4B	AL, 1/2 BSP	SDC10-2-DG-4B

* Aluminum bodies are to be used for pressures less than 210 bar [3000 psi].

* Additional housings available