

Accessories

CP602-5

Hand Pump
210 bar [3000 psi] • 9.2 ml/stroke

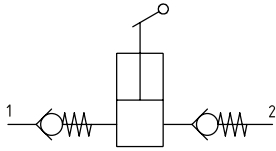


DESCRIPTION AND OPERATION

This is a manually operated, unidirectional hand pump. Activating the valve will force oil out through a check valve and into the system. Retracting the valve will draw oil into the chamber through a second check valve. This hand pump has been designed to be used on machines which require emergency release of brakes or for pilot supply for emergency lowering of access platforms. It can also be utilized in lubrication circuits.

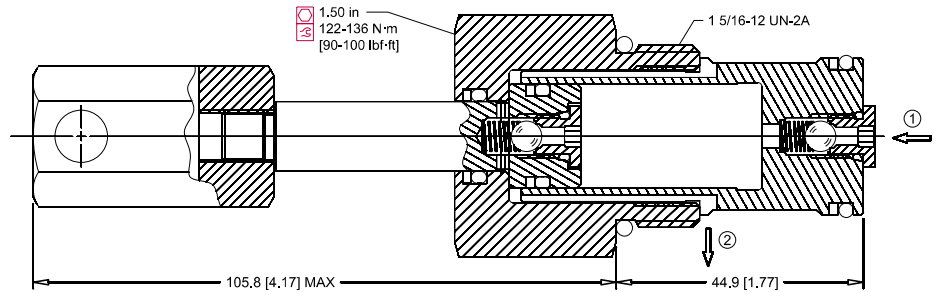
For smooth operation, inlet lines should not be excessively long, and the vertical distance between pump and tank level no more than 300 mm (12 inch).

SCHEMATIC



DIMENSIONS

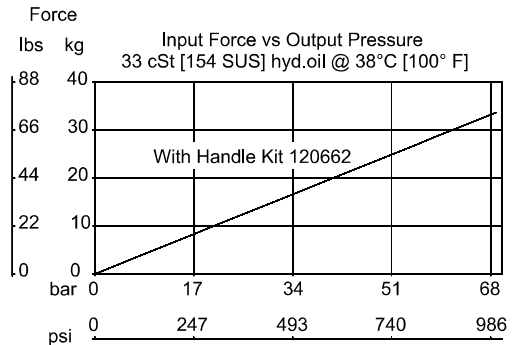
mm [in]



PERFORMANCE DATA

Rated pressure	210 bar [3000 psi]
Displacement	9.2 ml/stroke
Leakage	6 drops/ minute @ Rated pressure
Weight	0.24 kg [0.52 lbs]
Handle Kit	120662
Cavity	SDC16-2

PERFORMANCE CURVES



MODEL CODE

CP602 - 5 - B - 12S - H

Seal Option

Code	Seal Kit
B-Buna-N	120019
V-Viton	120020

Handle Option

0 - No Handle
H - Handle kit included (p/n 120662)

Housing

Code	Ports & Material	Housing Model Code
0	No Housing	
8S	#8 SAE	11083691

* Aluminum bodies are to be used for pressures less than 210 bar [3000 psi]
* Additional housings available

Accessories

120662

CP602-5 Handle Kit



■ DIMENSIONS

mm [in]

Installation Drawing

