

Pressure Reducing Valves

PRMP 064

Pressure Reducing, Relieving, Pilot Operated

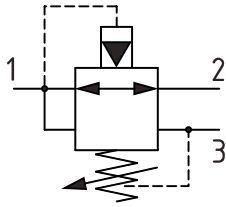
315 bar [4600 psi] • 40 l/min [11 US gpm]



DESCRIPTION AND OPERATION

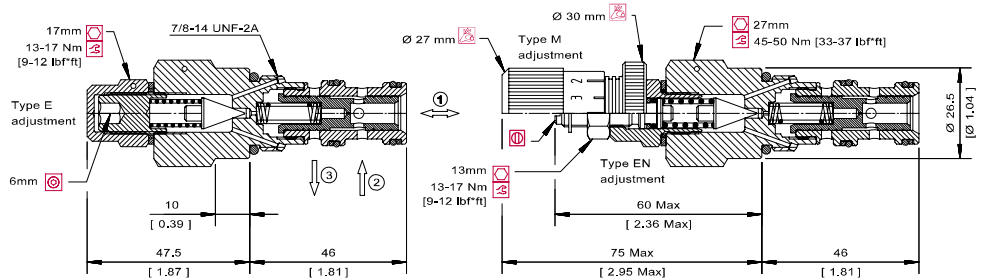
This is a normally open, pilot operated pressure reducing valve. Port 2 is open to port 1 until the setting is reached, at which time the valve throttles the outlet flow limiting the pressure. If the outlet pressure rises due to an external force, then the valve will open port 1 to port 3 acting as a relief valve. This valve is ideal for stable and precise control of a secondary pressure within a circuit.

SCHEMATIC



DIMENSIONS

mm [in]

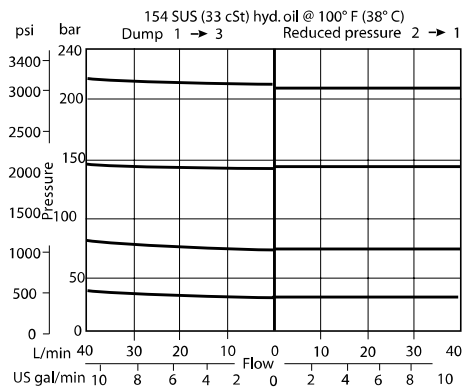


PERFORMANCE DATA

Rated pressure	315 bar [4600 psi]
Rated flow	40 l/min [11 US gpm]
Weight	0.21 kg [0.46 lb]
Cavity	SDC10-3

PERFORMANCE CURVES

Pressure Override



MODEL CODE

PRMP 064 - EN - 1 - 6S - V - 60

Adjustment Option

E - Internal
EN - External
M - Calibrated Knob
F - Tamper Resistant

Pressure Range

Code	Bar	Psi
1	10-70	[145-1015]
Standard Setting		Not set
2	30-140	[435-2030]
Standard Setting		Not set
3	70-210	[1015-3000]
Standard Setting		Not set

Pressure Setting

Code - Pressure setting in bar (5 bar increments within specified Pressure Setting)
XXX - Standard setting (see Pressure Setting for value)
Example:

Code	Bar	Psi
60	60	[870]

Seal Option

Code	Seal Kit
V - Viton	354001019
Omit - Buna -N	354000919

Housing

Code	Ports	Housing Model Code
00	No Housing	No Housing
6S	#6 SAE. AL	CP10-3-6S
8S	#8 SAE. AL	CP10-3-8S
SE3B	3/8 BSP. AL	SDC10-3-SE-3B
SE4B	1/2 BSP. AL	SDC10-3-SE-4B

* Aluminum bodies are to be used for pressures less than 210 bar [3000 psi].

* Additional housings available