

Data Sheet

Transit Mixer Pump 070/089 cm³ TMP EDC



For more than 40 years, Danfoss has been developing state-of-the-art components and systems for mobile machinery used in off-highway operations around the world. We have become a preferred supplier by offering the best of what really matters: The hardware inside your vehicle application. TMP EDC – our new generation of servo-controlled hydrostatic pumps – has been specially designed for Transit Mixer applications.

The TMP EDC is built around an advanced electrical control and is available in 70 cm³ and 89 cm³ pump displacements. Offering high quality and reliability, the new pump provides expanded functionality, greater total efficiency, and easy installation on the Transit Mixer.

The TMP EDC control and sensors options are PLUS+1[®] Compliant. PLUS+1 allows you to rapidly develop and customize electronic machine control. It opens up the future by combining machine controls and diagnostics in an integrated operating network.

Features

- Designed for quality and reliability
 - Designed specifically for Transit Mixer applications
 - Robust rotating group concept
 - Based on the latest technological developments
- Installation and packaging benefits
 - All connections are located on one side
 - Include Manual Overrides
 - Length optimized pump
 - Through drive pump
 - Coupling flange or spline shaft availability
 - High corner power
 - Standard connector interface
 - Metric connections
 - Expanded functionality through PLUS+1[®]
- Optimized for electrical control
 - Electrohydraulic control including Electrical Displacement Control (EDC)
- Expanded functionality
 - PLUS+1 Compliant control and sensor options
 - Speed and temperature sensors
- Greater total efficiency
 - Minimized control losses
 - Proven rotating group from Series 20
 - Low control pressure and control losses

Technical Specifications

Physical properties

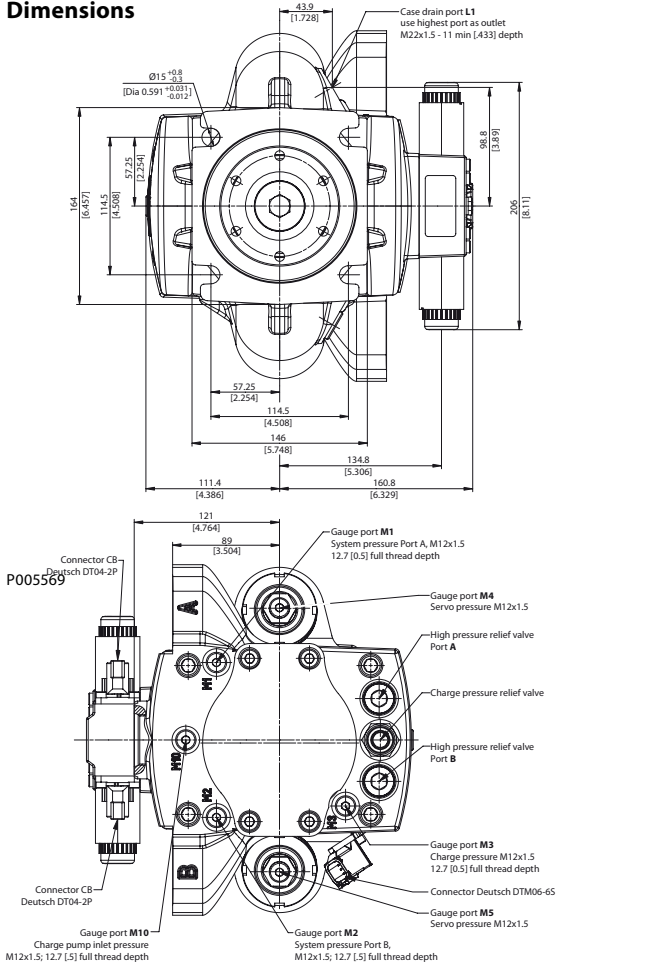
Features	Unit	Size	
		070	089
Displacement	cm ³ [in ³]	68.3 [4.17]	89.0 [5.43]
Weight dry (standard)	kg [lb]	61 [135]	

Operating parameters

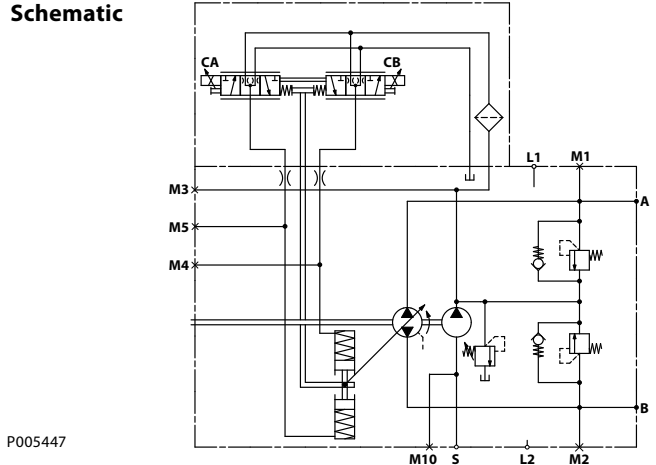
Features		Unit	Size
			070 / 089
Input speed	Minimum	min ⁻¹ (rpm)	500
	Rated		2500
	Maximum		2900
System pressure	Max. working pressure*	bar [psi]	420 [6090]
	Maximum pressure		450 [6525]
	Minimum pressure		10 [145]
Case pressure	Rated pressure	bar [psi]	3.0 [44]
	Maximum pressure		5.0 [73]

* Applied pressures above maximum working pressure requires Danfoss application approval.

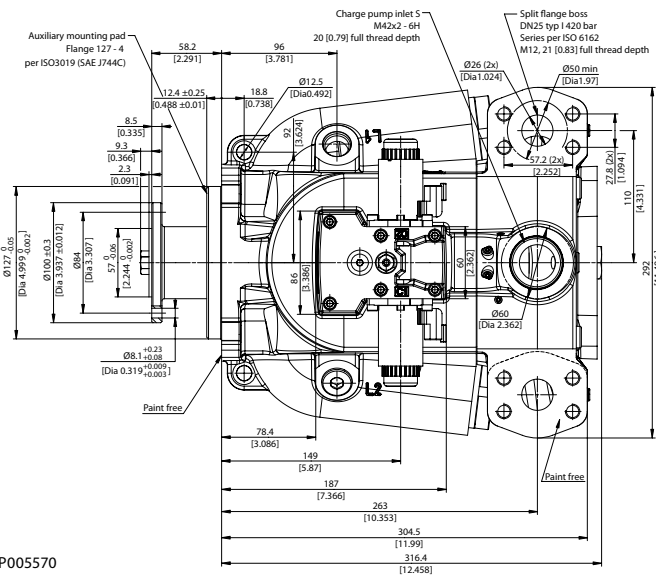
Dimensions



Schematic

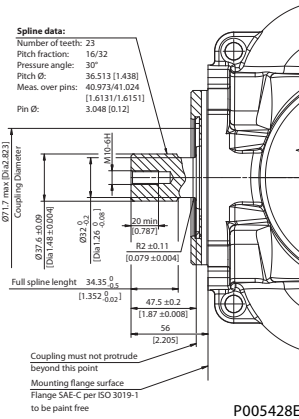


P005447



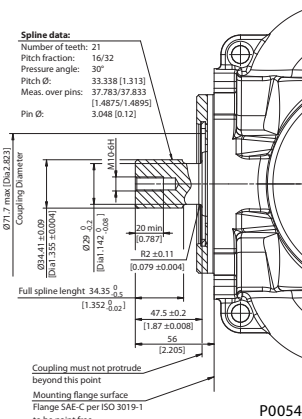
P005570

ISO 3019-1 (SAE C, 23-teeth)



P005428E

ISO 3019-1 (SAE C, 21-teeth)



P005429E

Danfoss Power Solutions (US) Company
 2800 East 13th Street
 Ames, IA 50010, USA
 Phone: +1 515 239 6000

Danfoss Power Solutions GmbH & Co. OHG
 Krokamp 35
 D-24539 Neumünster, Germany
 Phone: +49 4321 871 0

Danfoss Power Solutions ApS
 Nordborgvej 81
 DK-6430 Nordborg, Denmark
 Phone: +45 7488 2222

Danfoss Power Solutions (Shanghai) Co. Ltd.
 Building #22, No. 1000 Jin Hai Rd
 Jin Qiao, Pudong New District
 Shanghai, China 201206
 Phone: +86 21 3418 5200

Danfoss can accept no responsibility for possible errors in catalogues, brochures and other printed material. Danfoss reserves the right to alter its products without notice. This also applies to products already on order provided that such alterations can be made without subsequent changes being necessary in specifications already agreed. All trademarks in this material are property of the respective companies. Danfoss and the Danfoss logotype are trademarks of Danfoss A/S. All rights reserved.