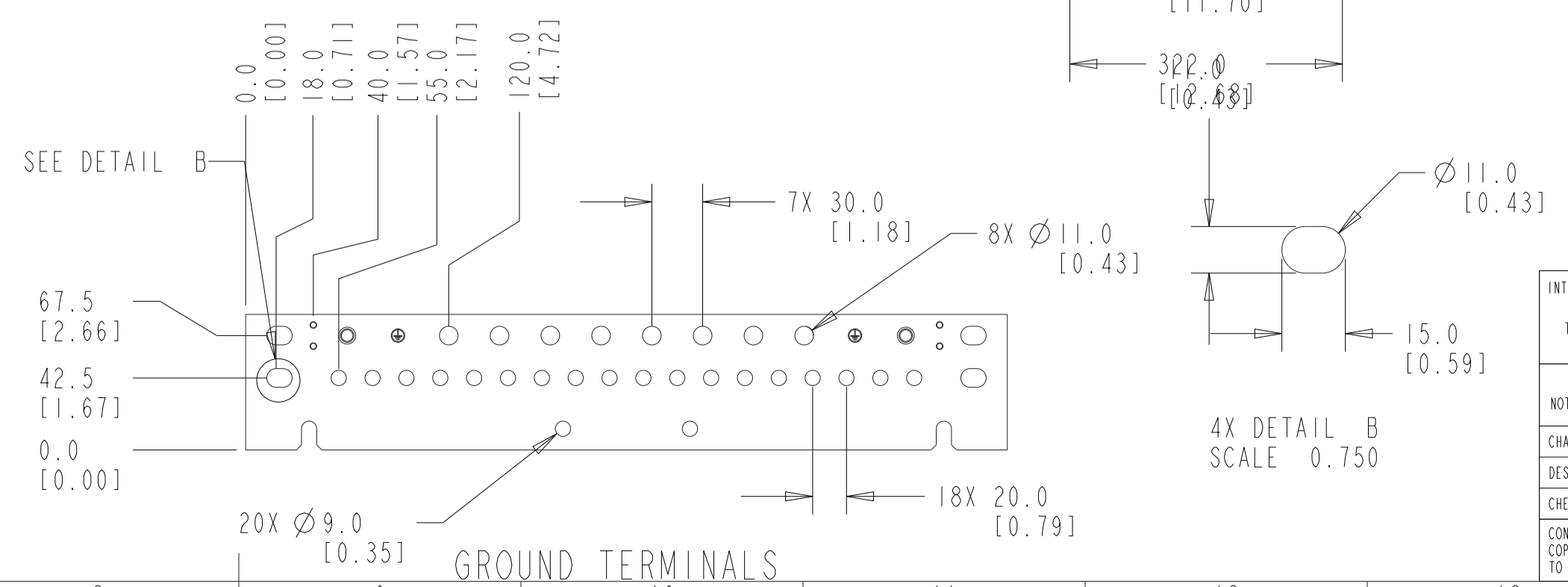
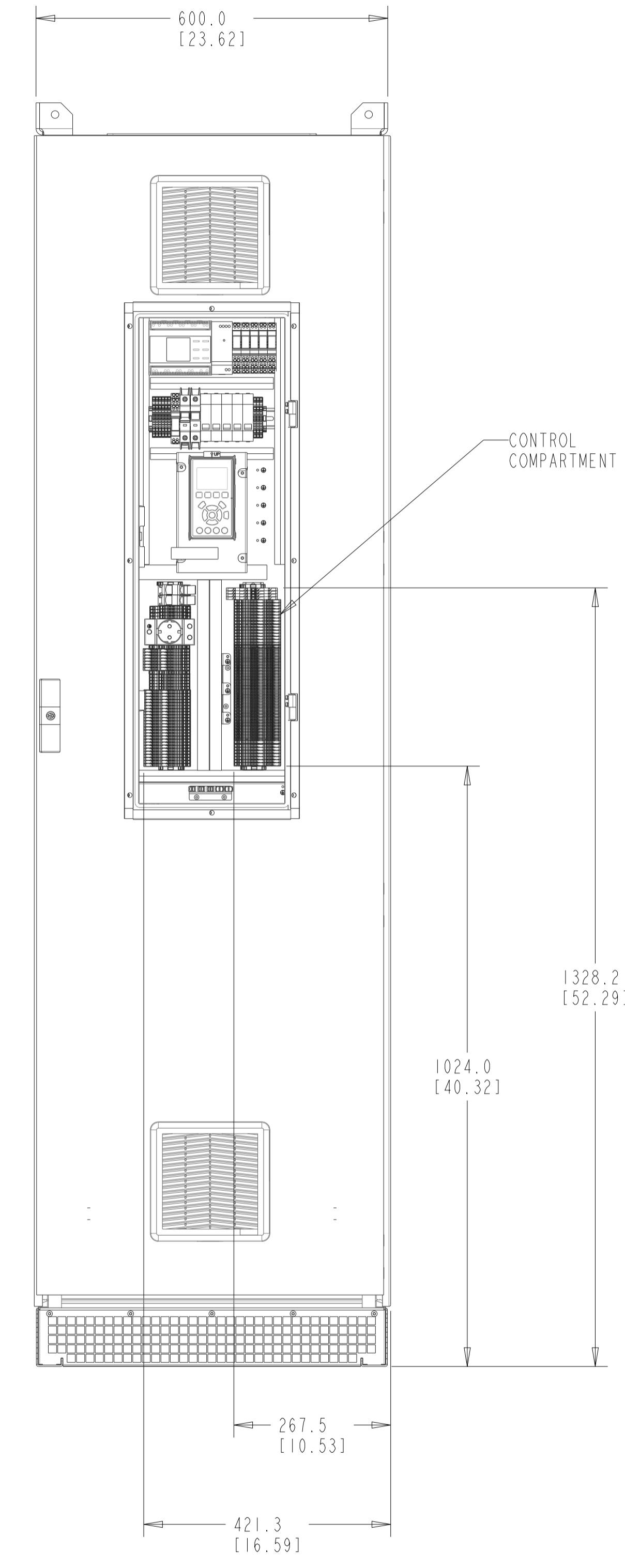
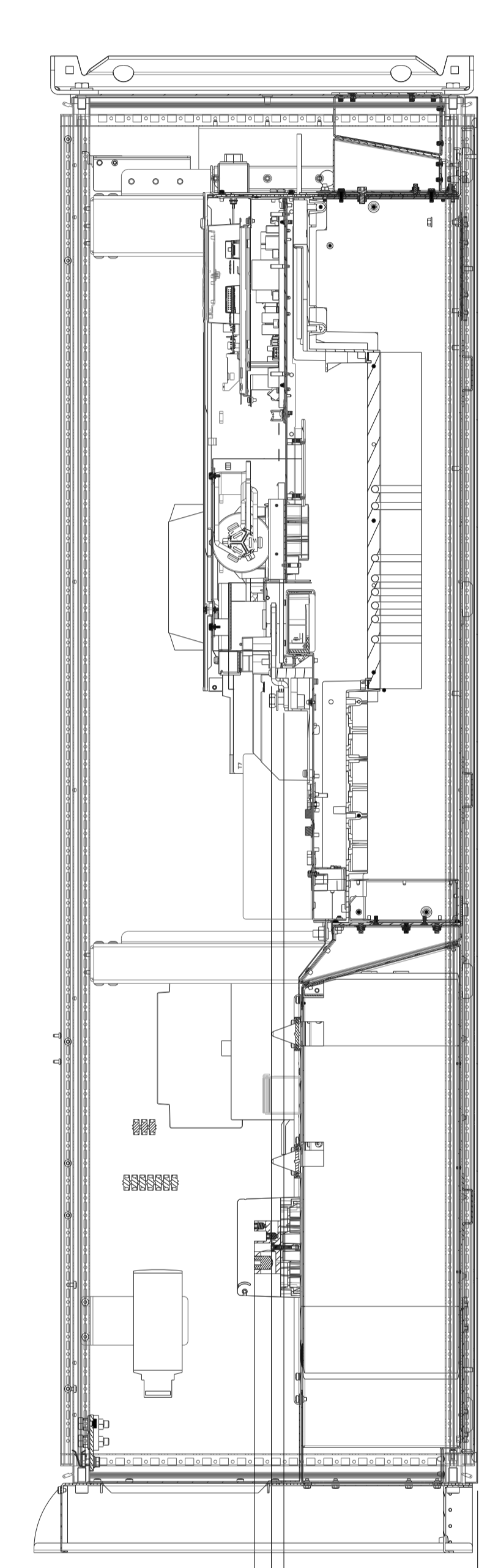
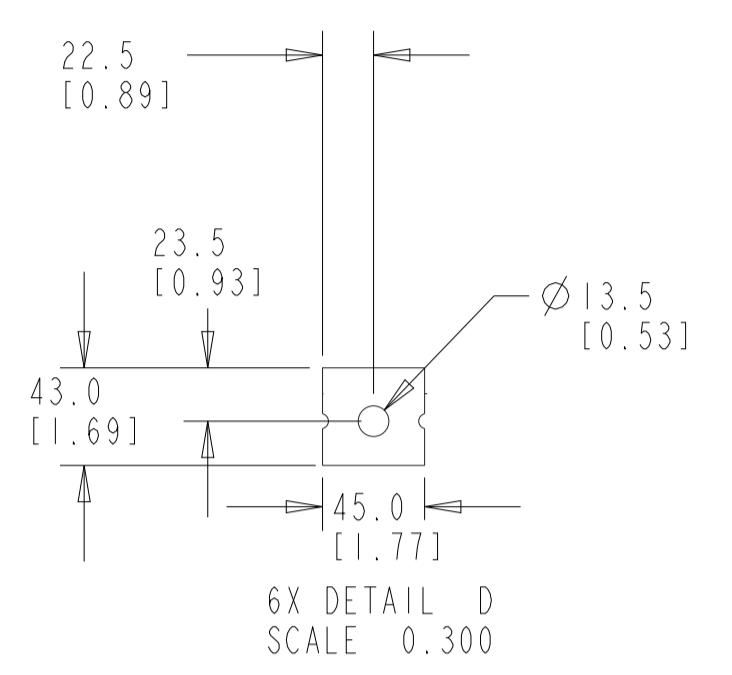
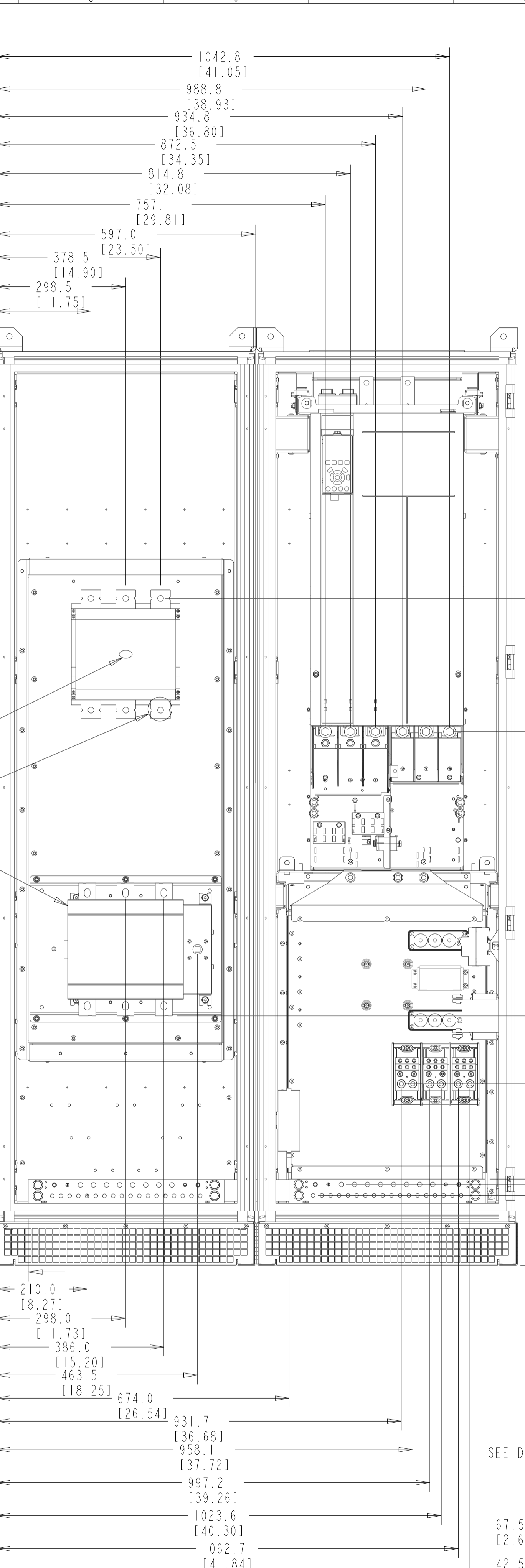
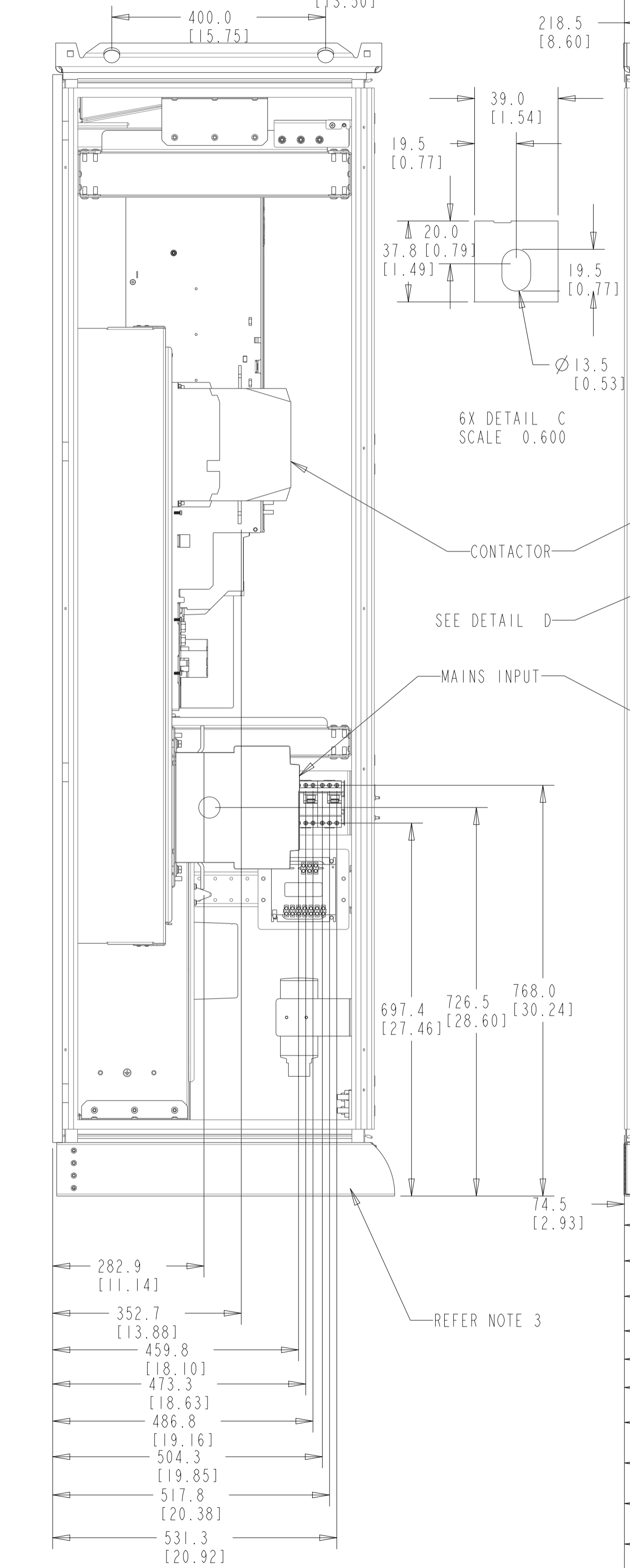


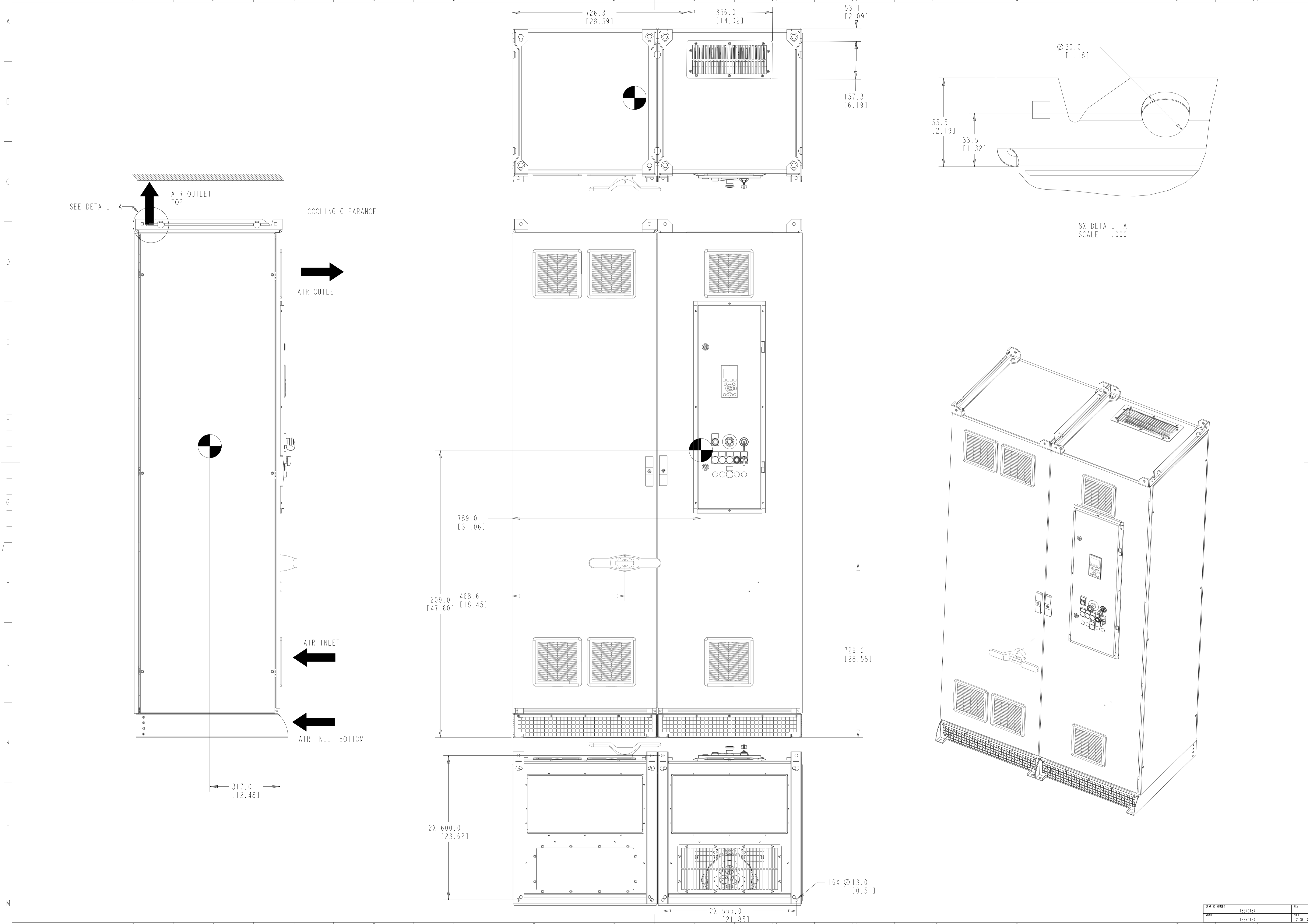
CONTROL COMPARTMENT DOOR IS NOT SHOWN IN THE DRAWING FOR SHOWING INTERNAL COMPONENTS IN CONTROL COMPARTMENT

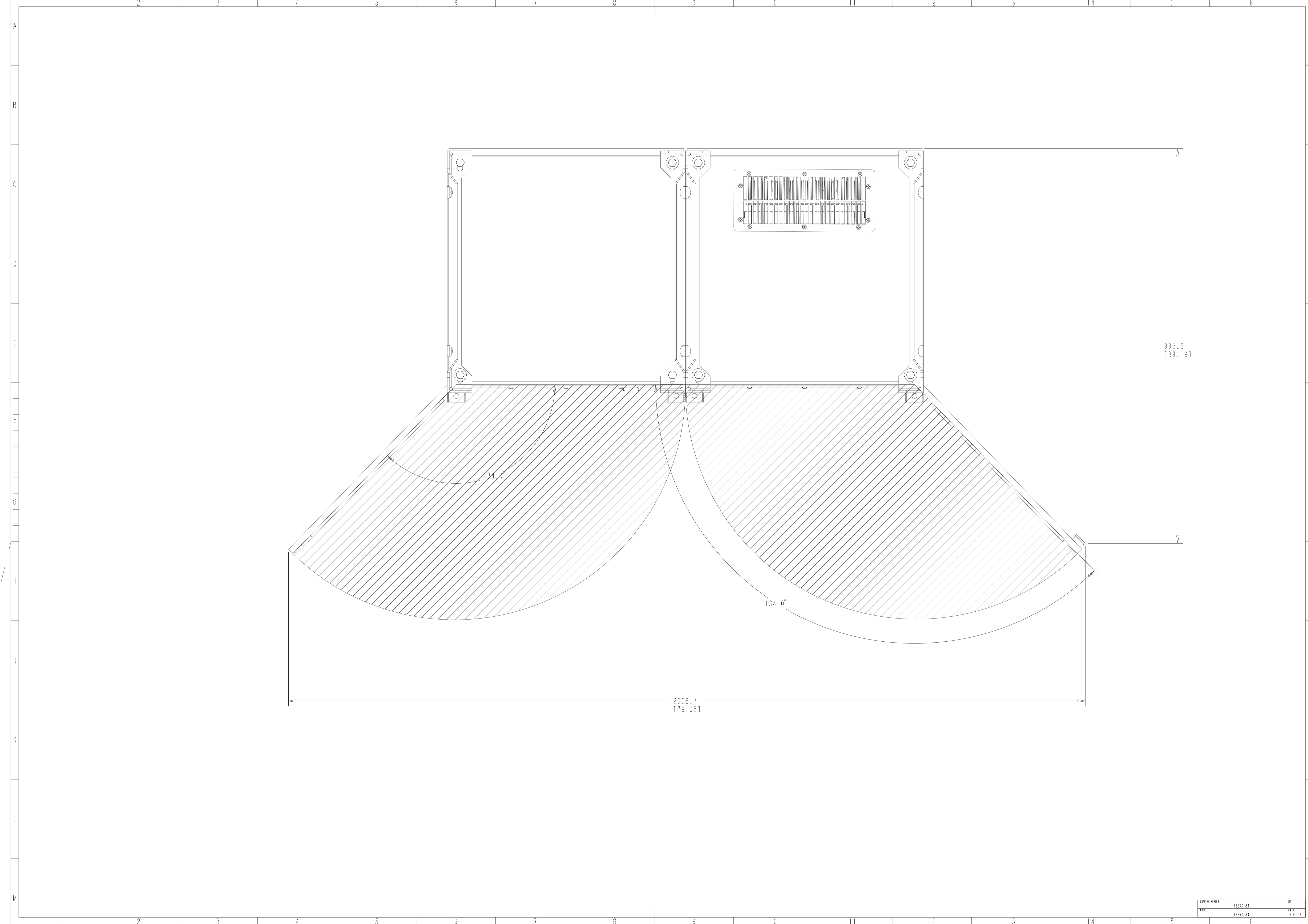


NOTE:
1. BACK CHANNEL COOLING: BOTTOM IN TOP OUT 1089.1 [42.88]
2. CABLE FEED: BOTTOM ENTRY & BOTTOM OUT
3. PLINTH HEIGHT CAN BE OF 100, 200, & 400mm HEIGHT.

▽ CRITICAL CHARACTERISTICS
▽ KEY CHARACTERISTICS
○ INSPECTION
MUST COMPLY TO ROHS DIRECTIVE 2011/65/EU

INTERPRET DIM. & TOL. PER ASME Y14.5M-1994		THIRD ANGLE PROJECTION	SCALE	SIZE	MATERIAL
ALL DIMENSIONS ARE IN MILLIMETERS			0.150	A1	
TOLERANCES UNLESS OTHERWISE SPECIFIED					FINISH
±0.10 ±0.50 ±1.0					DESCRIPTION
NOT VALID WITHOUT FROZEN DATE IN 10 STAMP					
CHANGED	SABARISH	MAY-21-2019			
DESIGNED	LAURI	MAY-07-2019			
CHECKED					
CONFIDENTIAL - PROPERTY OF DANFOSS A/S HORNBORG, DENMARK. NOT TO BE HANDED OVER TO BE COPIED OR BE USED BY A THIRD PARTY. TWO OR THREE DIMENSIONAL REPRODUCTION OF CONTENTS TO BE AUTHORIZED BY DANFOSS A/S.					
FORM NUMBER	132R0184	REV	002	MCAD-PLV-D10H-IP54 FUSDIS-CON-DUPT-CM	
DATE	132R0184	SHEET	1 OF 3		





DATE	NO.	REV.
132R0184		
132R0184		3 OF 3