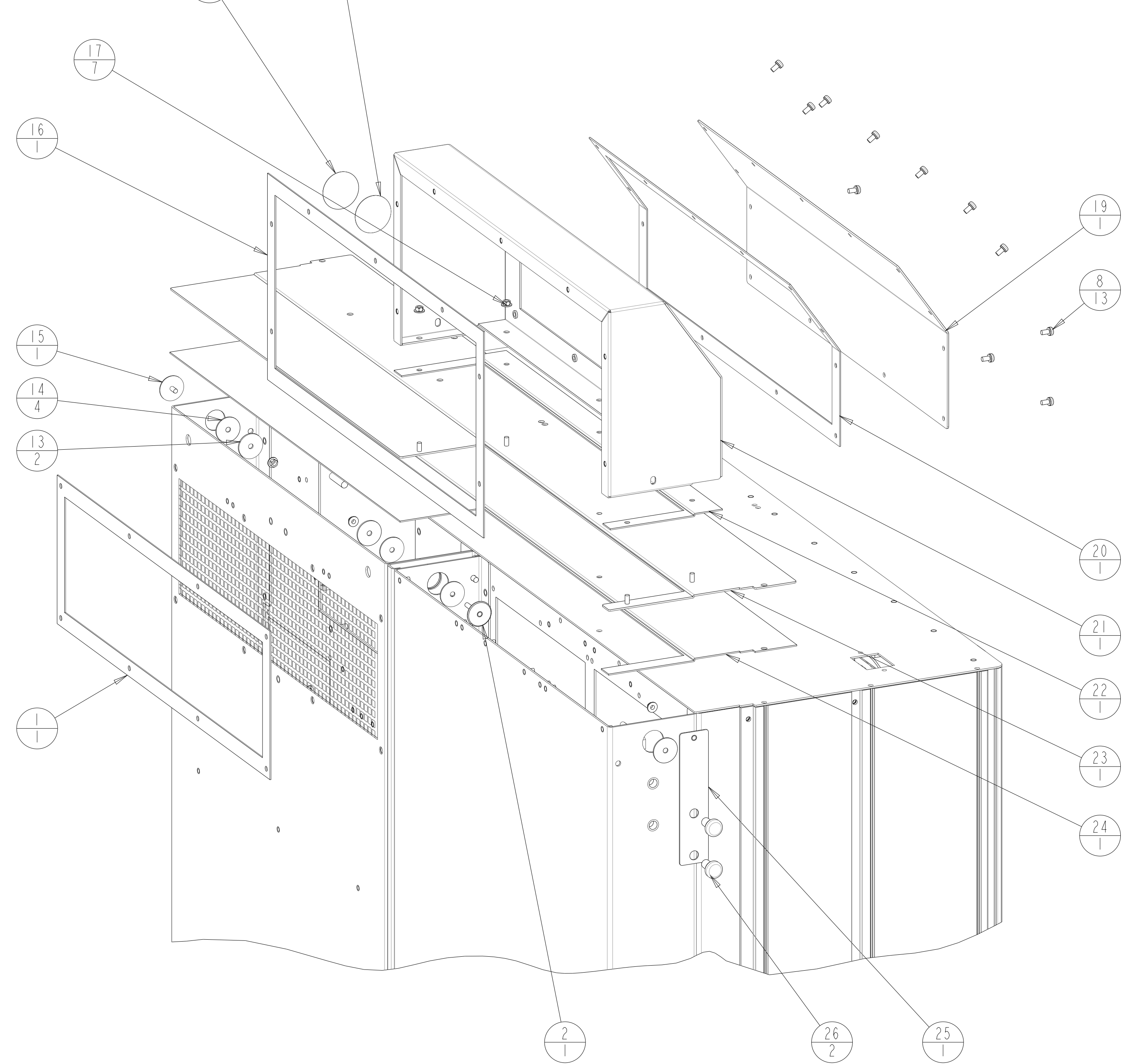
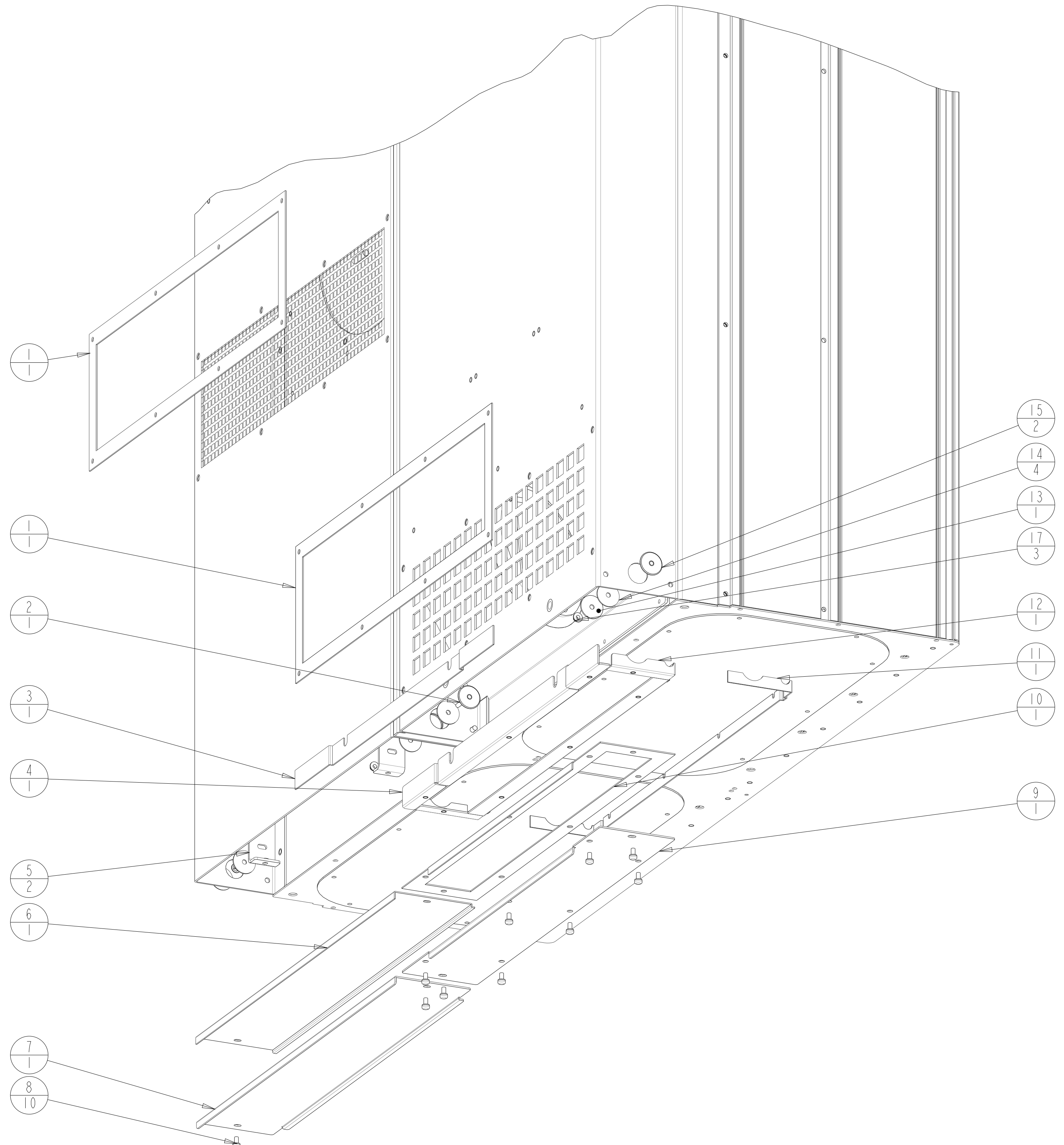


- NOTICE -
 THIS DOCUMENT CONTAINS PROPRIETARY INFORMATION OF DANFOSS DRIVES. IT IS LOANED BY DANFOSS DRIVES SUBJECT TO THE CONDITIONS THAT IT AND THE INFORMATION EMBODIED THEREIN SHALL BE USED ONLY FOR RECORD AND REFERENCE PURPOSES. SHALL NOT BE USED OR CAUSED TO BE USED IN ANY WAY PREJUDICIAL TO THE INTERESTS OF DANFOSS DRIVES. SHALL NOT BE REPRODUCED OR COPIED IN WHOLE OR IN PART OR DISCLOSED TO ANYONE WITHOUT THE DIRECT WRITTEN PERMISSION OF DANFOSS DRIVES, AND SHALL BE RETURNED UPON REQUEST.

REVISION HISTORY			
REV	ECN NUMBER	ENTRY BY	DATE
001	INITIAL RELEASE	KK	11/12/12

BOTTOM-BACK

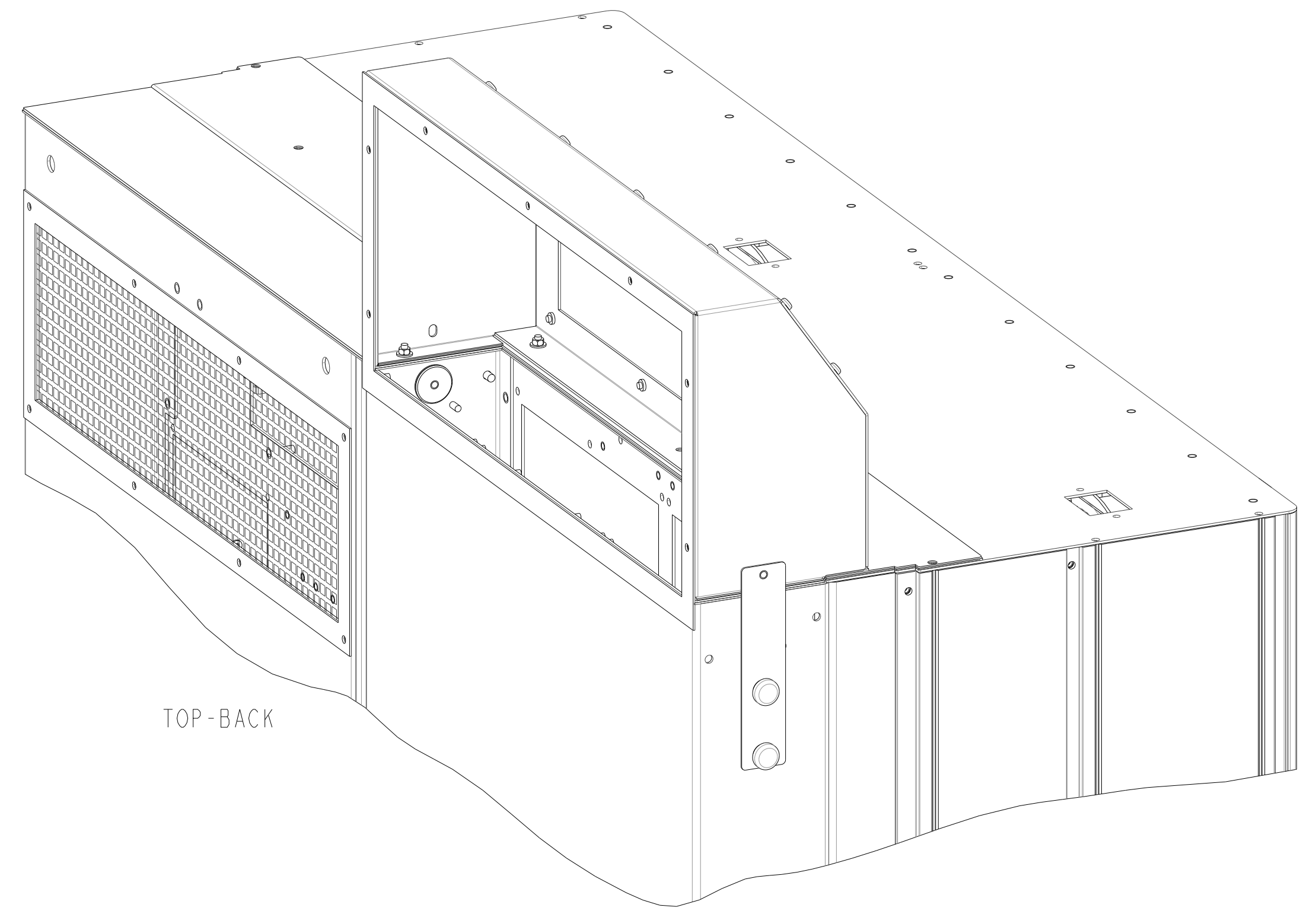
TOP-BACK



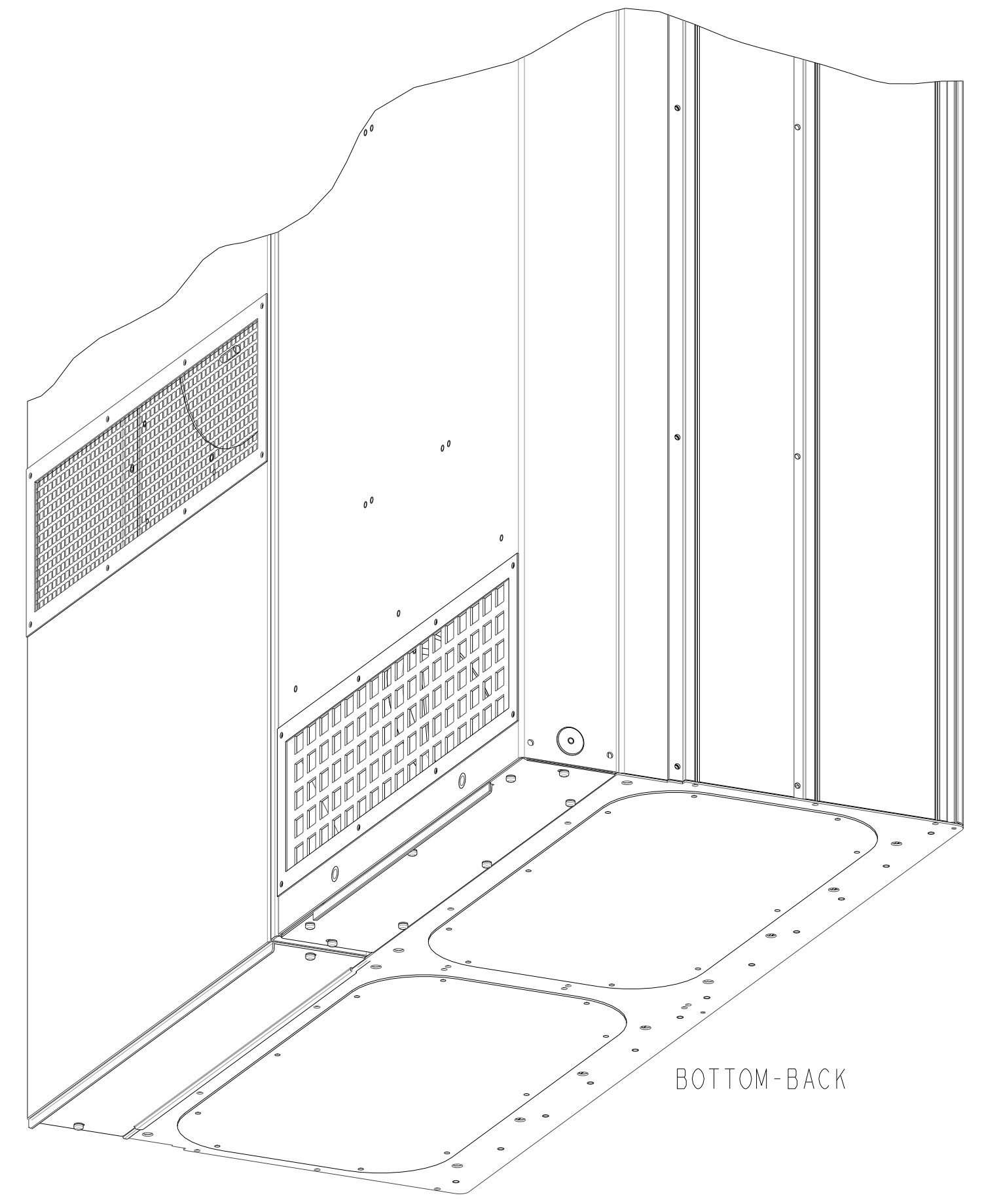
NOTES:
 1. FOR FASTENER TORQUES, REFER TO 175R5600 CLASS A. UNLESS OTHERWISE SPECIFIED.
 2. PEDESTAL NOT SHOWN FOR CLARITY

UNLESS OTHERWISE SPECIFIED INTERPRET DIM. AND TOL. PER ASME Y14.5M-1994		PROPERTIES		TITLE	
MATERIAL	N/A	MATERIAL	N/A	 4401 N. BELL SCHOOL RD. LOVES PARK, ILLINOIS 61114 USA (815) 639-8000 FAX (815) 639-8000	
FINISH	N/A	FINISH	N/A		
THICKNESS	N/A	THICKNESS	N/A		
EST. WEIGHT	N/A	EST. WEIGHT	N/A		
THIRD ANGLE PROJECTION		APPROVALS	INITIALS	DATE	KIT, E9, LHD, IP54, BACKWALL COOLING MODEL P424-E-BACKWALL-COOLING DRAWING NO. 176F3538
		DRAWN	KK	11/12/12	SIZE D SCALE 0.300
		CHANGED	CCN	09/03/14	REV 002 SHEET 1 OF 3
		ENGR			

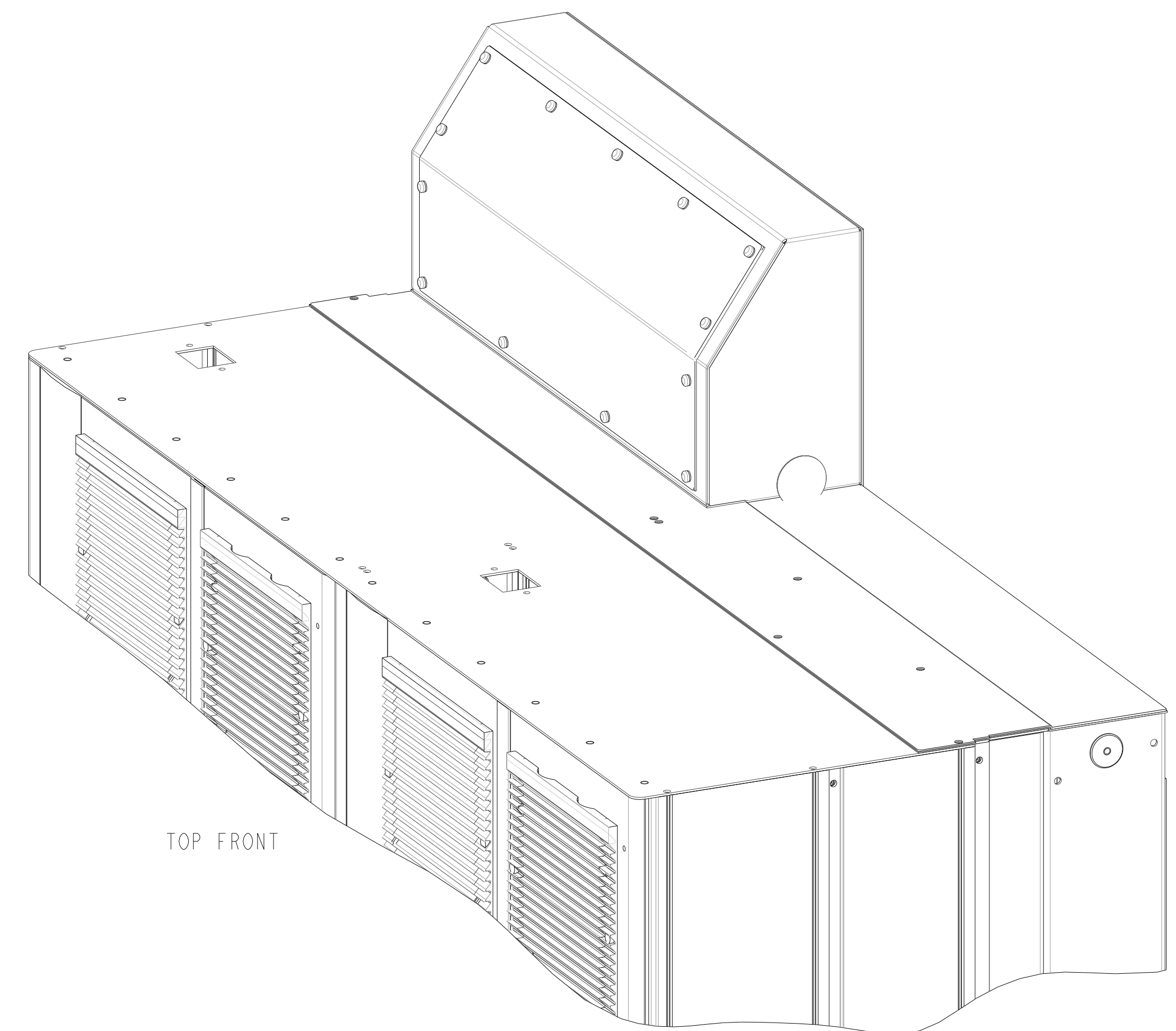
ITEM	PART #	QTY	NOTE
1	177G5330	3	GASKET
2	177G5325	2	
3	177G5326	1	GASKET
4	177G5311	1	
5	177G5331	2	
6	177G5333	1	GASKET
7	177G5332	1	
8	26412	25	SCREW
9	177G5317	1	
10	177G5322	1	GASKET
11	177G5324	1	GASKET
12	177G5316	1	
13	177G5319	3	
14	177G5323	8	GASKET
15	177G5318	3	
16	177G5329	1	GASKET
17	26513	10	NUT
18			
19	177G5312	1	
20	177G5313	1	GASKET
21	177G5321	1	
22	177G5328	1	GASKET
23	177G5314	1	
24	177G5315	1	GASKET
25	177G5320	1	
26	177G0721	2	SCREW
27	177A0025	1	
28	177A0040	1	
29	177R0513	1	INSTRUCTIONS
30	177G6244	1	PACKAGING



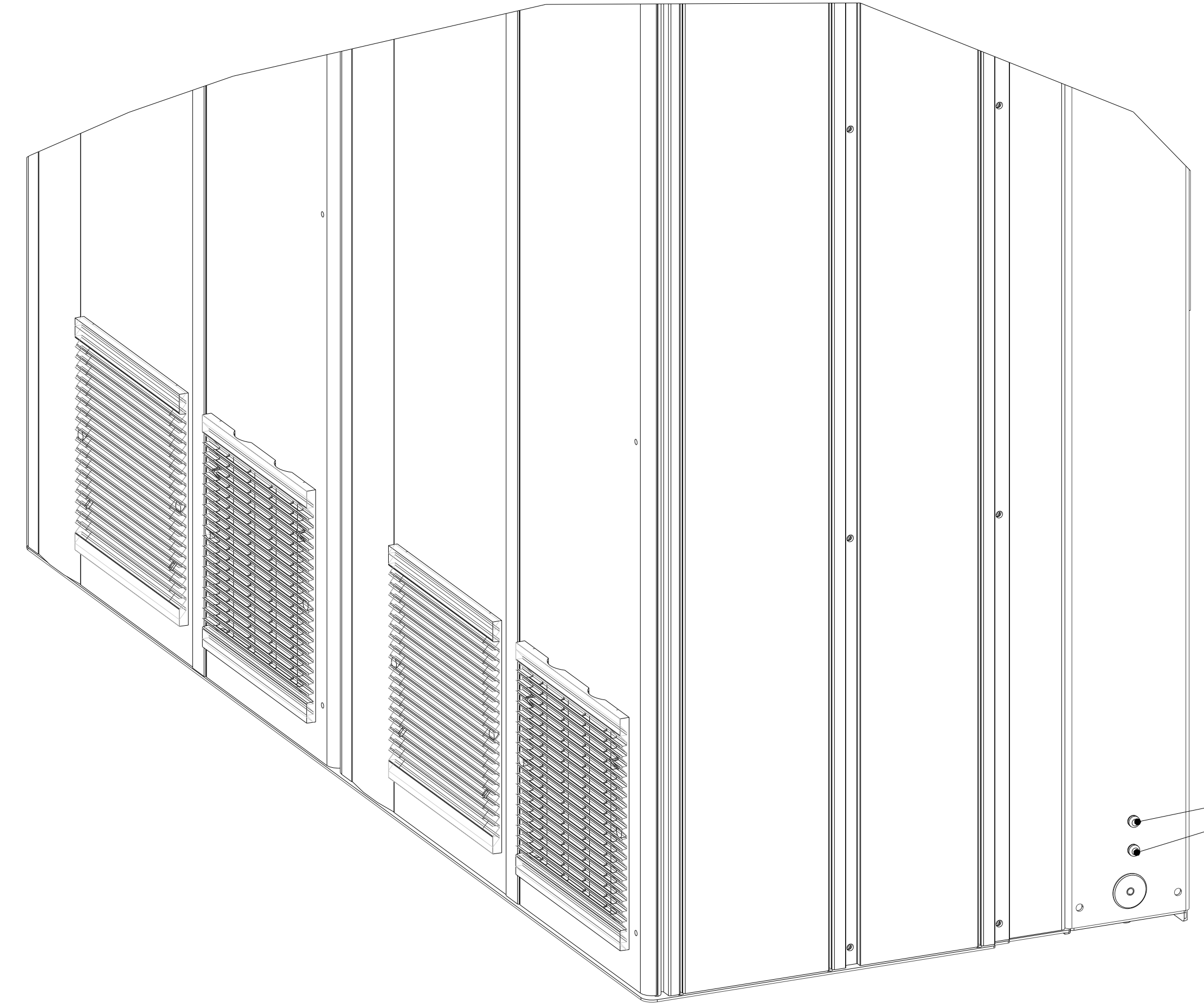
TOP-BACK



BOTTOM-BACK



TOP FRONT



8
2

TITLE			
KIT, E9, LHD, IP54, BACKWALL COOLING			
SIZE	MODEL	REV	
D	P424-E-BACKWALL-COOLING	002	
SCALE	DRAWING NO.	SHEET	
0.300	176F3538	2 OF 3	

8

7

6

5

4

3

2

1

D

D

C

C

B

B

A

A

2X DRIVE MOUNTING HOLES

1972.8
[78]

1927.8
[76]

1917.8
[76]

1777.8
[70]

1767.8
[70]

884.8
[35]

874.8
[34]

734.8
[29]

724.8
[29]

.0
[01]

553.5
[22]

2X 533.5
[21]

484.0
[19]

184.5
[7]

☉

600.3
[24]

☉
DRIVE

560.0
[22]

542.0
[21]

360.0
[14]

☉

☉
AAF

2217.7
[87]

2207.7
[87]

2169.7
[85]

2039.7
[80]

1997.7
[79]

002

553.5
[22]

533.5
[21]

184.5
[7]

31X M5 MOUNTING HOLES

407.8
[16]

397.8
[16]

257.8
[10]

247.8
[10]

TITLE		
KIT, E9, LHD, IP54, BACKWALL COOLING		
SIZE	MODEL	REV
D	P424-E-BACKWALL-COOLING	002
SCALE	DRAWING NO.	SHEET
0.300	176F3538	3 OF 3

8

7

6

5

4

3

2

1