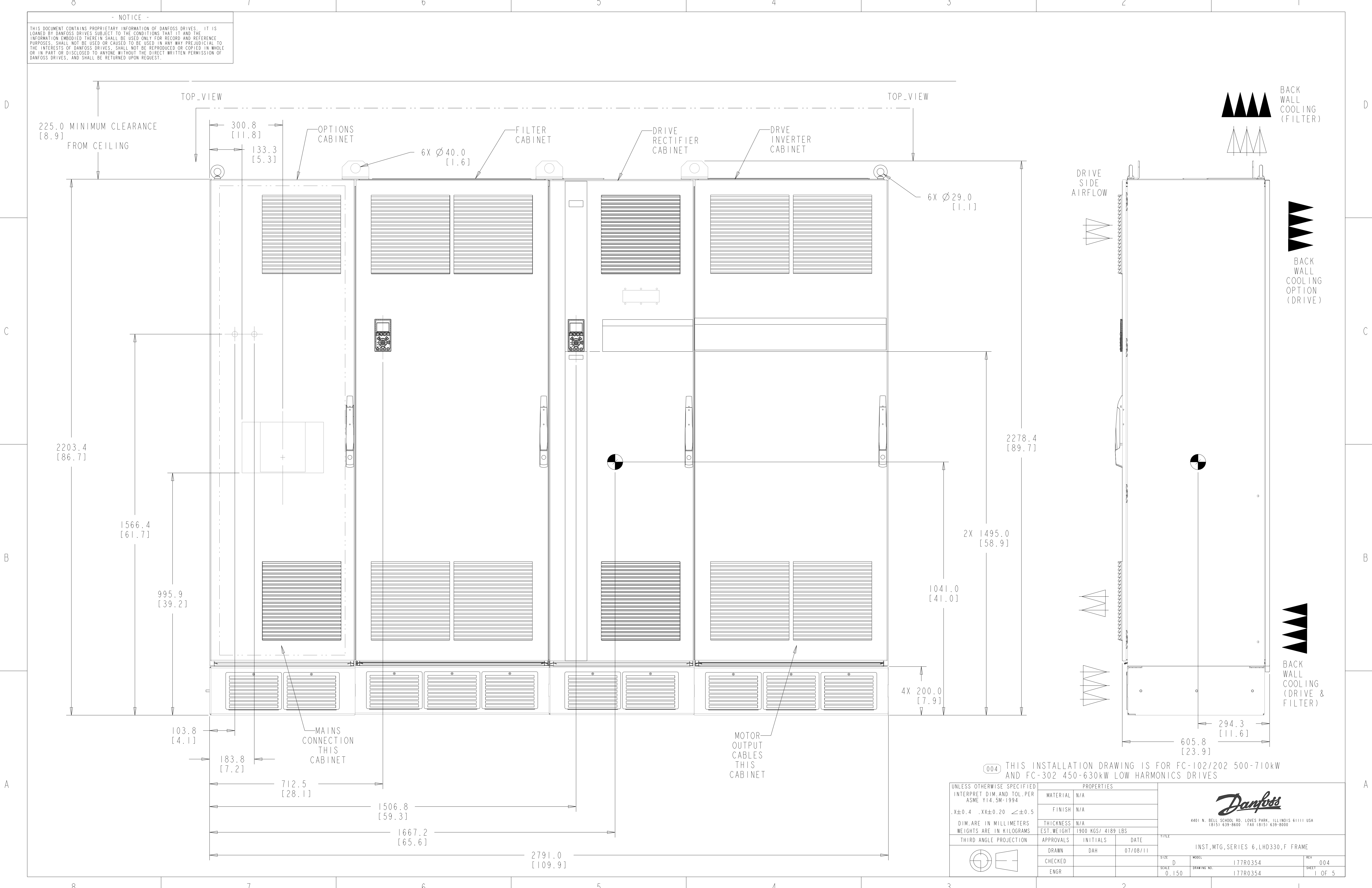


- NOTICE -
 THIS DOCUMENT CONTAINS PROPRIETARY INFORMATION OF DANFOSS DRIVES. IT IS LOANED BY DANFOSS DRIVES SUBJECT TO THE CONDITIONS THAT IT AND THE INFORMATION EMBODIED THEREIN SHALL BE USED ONLY FOR RECORD AND REFERENCE PURPOSES. SHALL NOT BE USED OR CAUSED TO BE USED IN ANY WAY PREJUDICIAL TO THE INTERESTS OF DANFOSS DRIVES. SHALL NOT BE REPRODUCED OR COPIED IN WHOLE OR IN PART OR DISCLOSED TO ANYONE WITHOUT THE DIRECT WRITTEN PERMISSION OF DANFOSS DRIVES, AND SHALL BE RETURNED UPON REQUEST.



225.0 MINIMUM CLEARANCE
 [8.9]
 FROM CEILING

TOP_VIEW

TOP_VIEW

300.8 [11.8]
 133.3 [5.3]

OPTIONS CABINET

FILTER CABINET

DRIVE RECTIFIER CABINET

DRIVE INVERTER CABINET

6X Ø40.0 [1.6]

6X Ø29.0 [1.1]

BACK WALL COOLING (FILTER)

BACK WALL COOLING OPTION (DRIVE)

BACK WALL COOLING (DRIVE & FILTER)

DRIVE SIDE AIRFLOW

2203.4 [86.7]

2278.4 [89.7]

1566.4 [61.7]

2X 1495.0 [58.9]

995.9 [39.2]

1041.0 [41.0]

4X 200.0 [7.9]

103.8 [4.1]

MAINS CONNECTION THIS CABINET

MOTOR OUTPUT CABLES THIS CABINET

183.8 [7.2]

712.5 [28.1]

1506.8 [59.3]

1667.2 [65.6]

2791.0 [109.9]

294.3 [11.6]

605.8 [23.9]

004 THIS INSTALLATION DRAWING IS FOR FC-102/202 500-710kW AND FC-302 450-630kW LOW HARMONICS DRIVES

UNLESS OTHERWISE SPECIFIED INTERPRET DIM. AND TOL. PER ASME Y14.5M-1994		PROPERTIES		TITLE	
MATERIAL	N/A	MATERIAL	N/A	 4401 N. BELL SCHOOL RD. LOVES PARK, ILLINOIS 61111 USA (815) 639-9000 FAX (815) 639-9000	
FINISH	N/A	THICKNESS	N/A		
DIM. ARE IN MILLIMETERS		EST. WEIGHT	1900 KGS/ 4189 LBS		
WEIGHTS ARE IN KILOGRAMS		APPROVALS	INITIALS DATE		
THIRD ANGLE PROJECTION		DRAWN	DAH	07/08/11	INST, MTG, SERIES 6, LHD330, F FRAME
		CHECKED			SIZE D
		ENGR			SCALE 0.150
					MODEL 177R0354
					DRAWING NO. 177R0354
					REV 004
					SHEET 1 OF 5

8

7

6

5

4

3

2

1

D

D

C

C

B

B

A

A

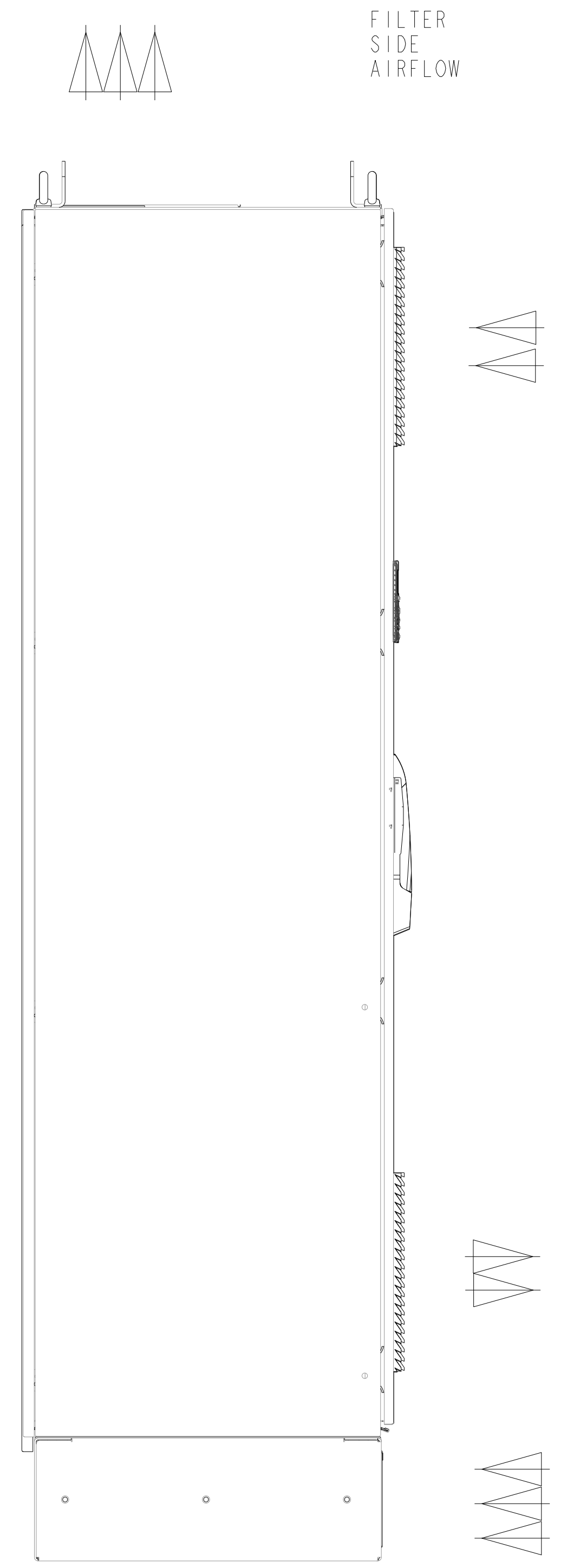
NOTES:
 COOLING:
 1) THE VLT FREQUENCY CONVERTER MUST BE INSTALLED VERTICALLY WITH THE MINIMUM INDICATED FREE SPACE ABOVE THE ENCLOSURE.
 2) ALL IP21/UL TYPE NEMA 1 AND IP54/UL TYPE NEMA 12 UNITS MAY BE MOUNTED SIDE BY SIDE WITH NO MINIMUM CLEARANCE.
 3) FAILURE TO REINSTALL THE CABINET FLOOR GLAND PLATES WILL HAVE A NEGATIVE INFLUENCE ON THE INTERNAL COOLING CAPACITY OF THE UNIT AND MAY CAUSE TRIP FAULTS.
 4) STANDARD COOLING CONFIGURATION IS WITH THE INTAKE THROUGH THE BASE CABLE PLINTH AND EXHAUST OUT THE TOP OF THE ENCLOSURE. THE DOORS ARE ALSO EQUIPPED WITH FANS TO PROVIDE COOLING FOR THE CABINET.

BACK WALL COOLING:
 OPTIONAL COOLING CONFIGURATION IS WITH THE INTAKE THROUGH THE LOWER REAR OF THE CABINET. THE EXHAUST IS OUT THE TOP OF THE ENCLOSURE FOR THE FILTER. (CONSULT THE FACTORY WHEN PLACING UNITS NEXT TO EACH OTHER IN THIS CONFIGURATION).

WALL MOUNTING:
 THE FILTER IS NOT INTENDED TO BE WALL MOUNTED.

LIFTING:
 THE FILTER IS INTENDED TO BE LIFTED USING THE BRACKETS ON THE TOP OF THE ENCLOSURE.

RATING:
 IP21/IP54 AND NEMA 1/ NEMA 12



TITLE		
INST,MTG,SERIES 6,LHD330,F FRAME		
SIZE	MODEL	REV
D	177R0354	004
SCALE	DRAWING NO.	SHEET
0.150	177R0354	2 OF 5

8

7

6

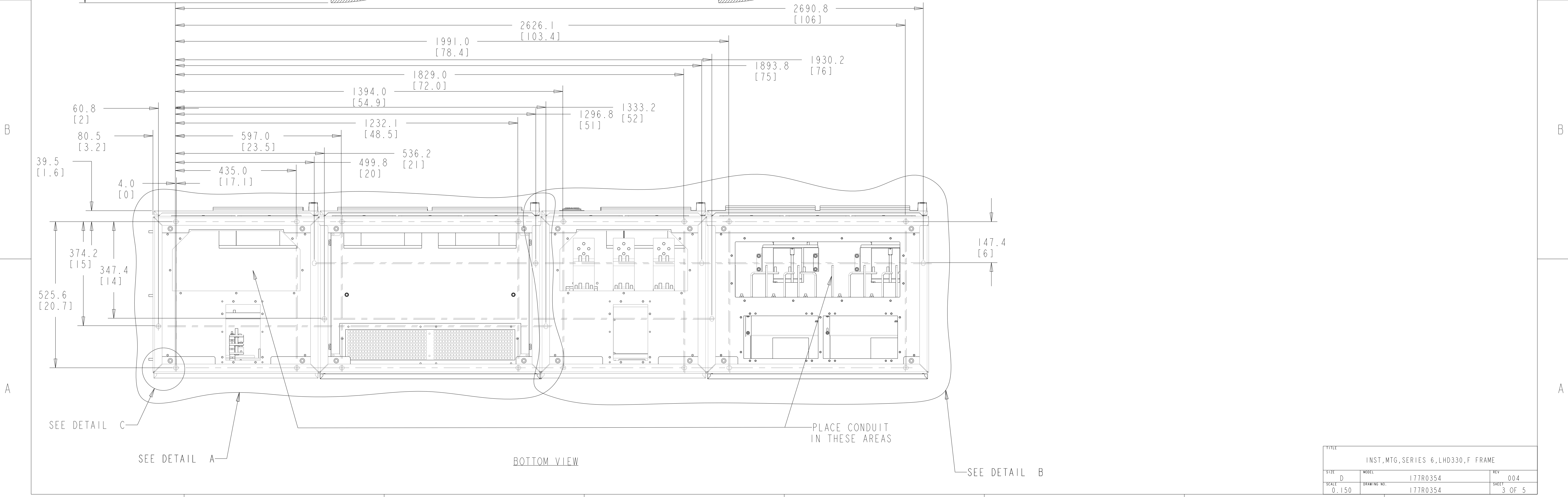
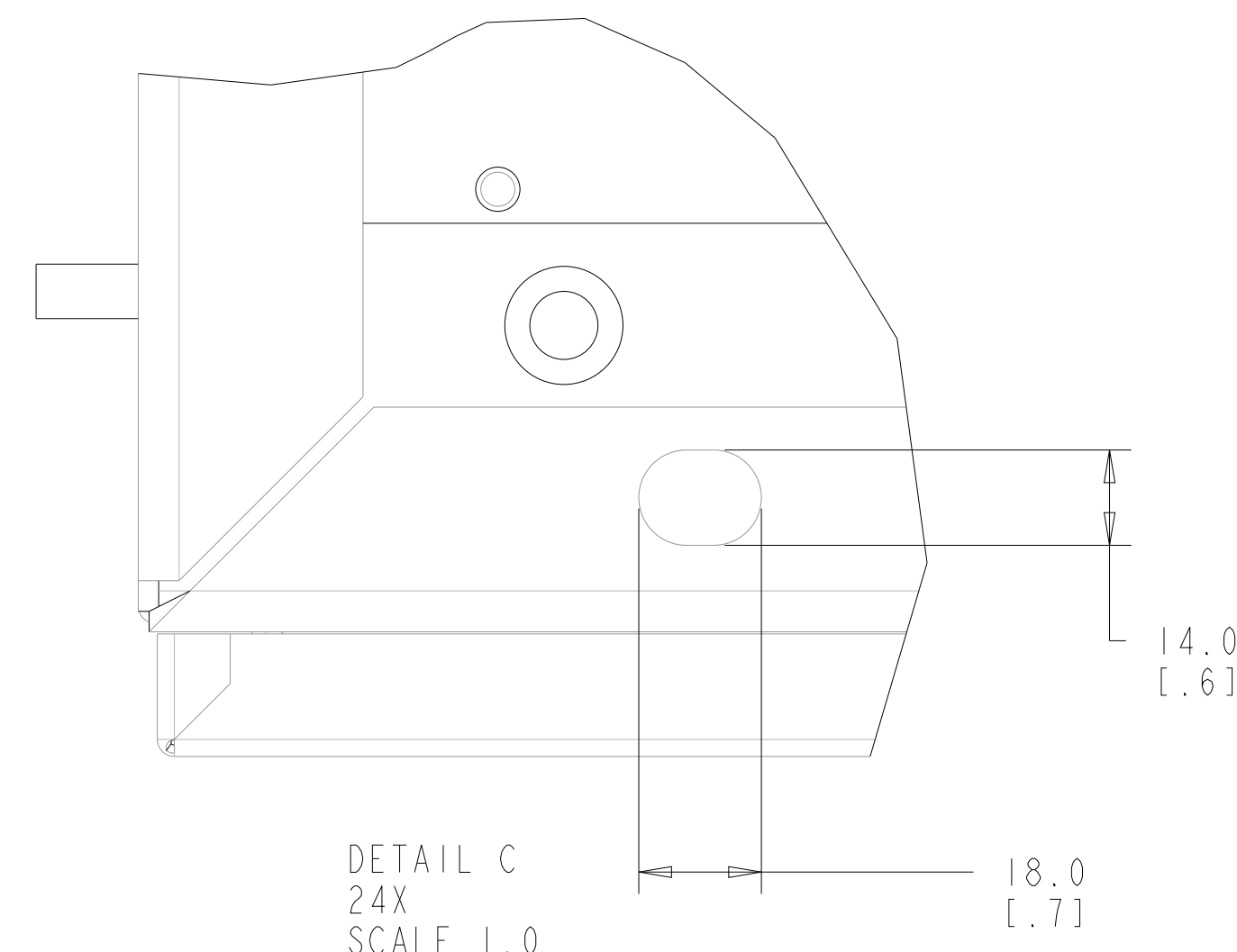
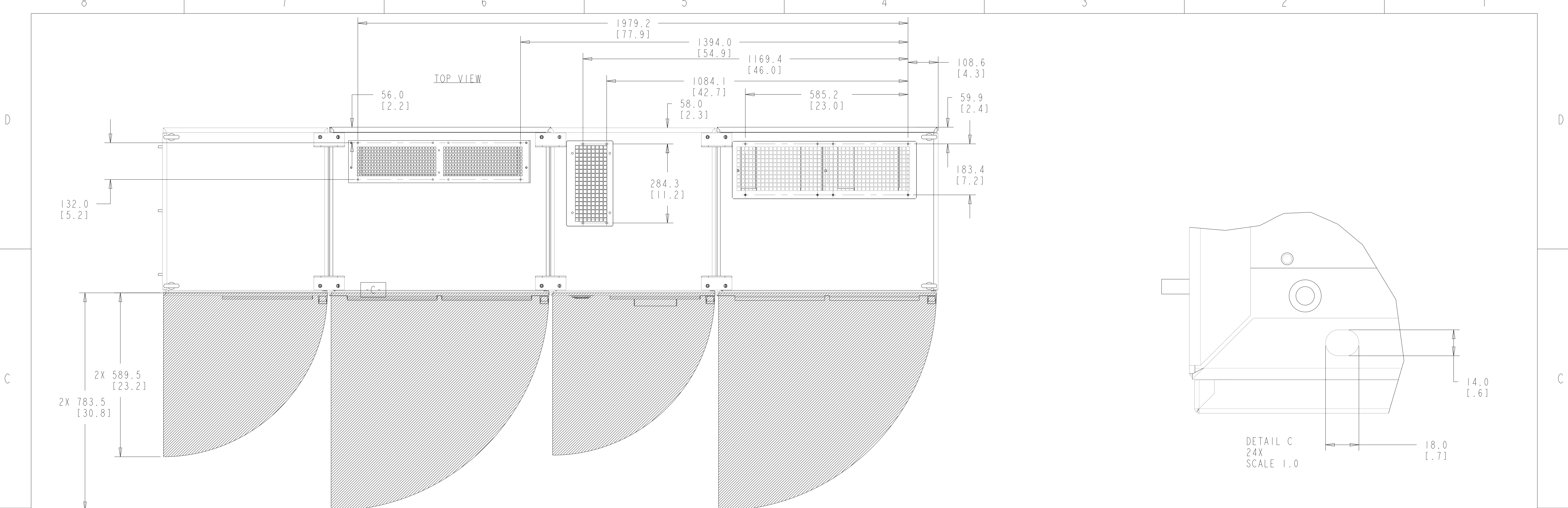
5

4

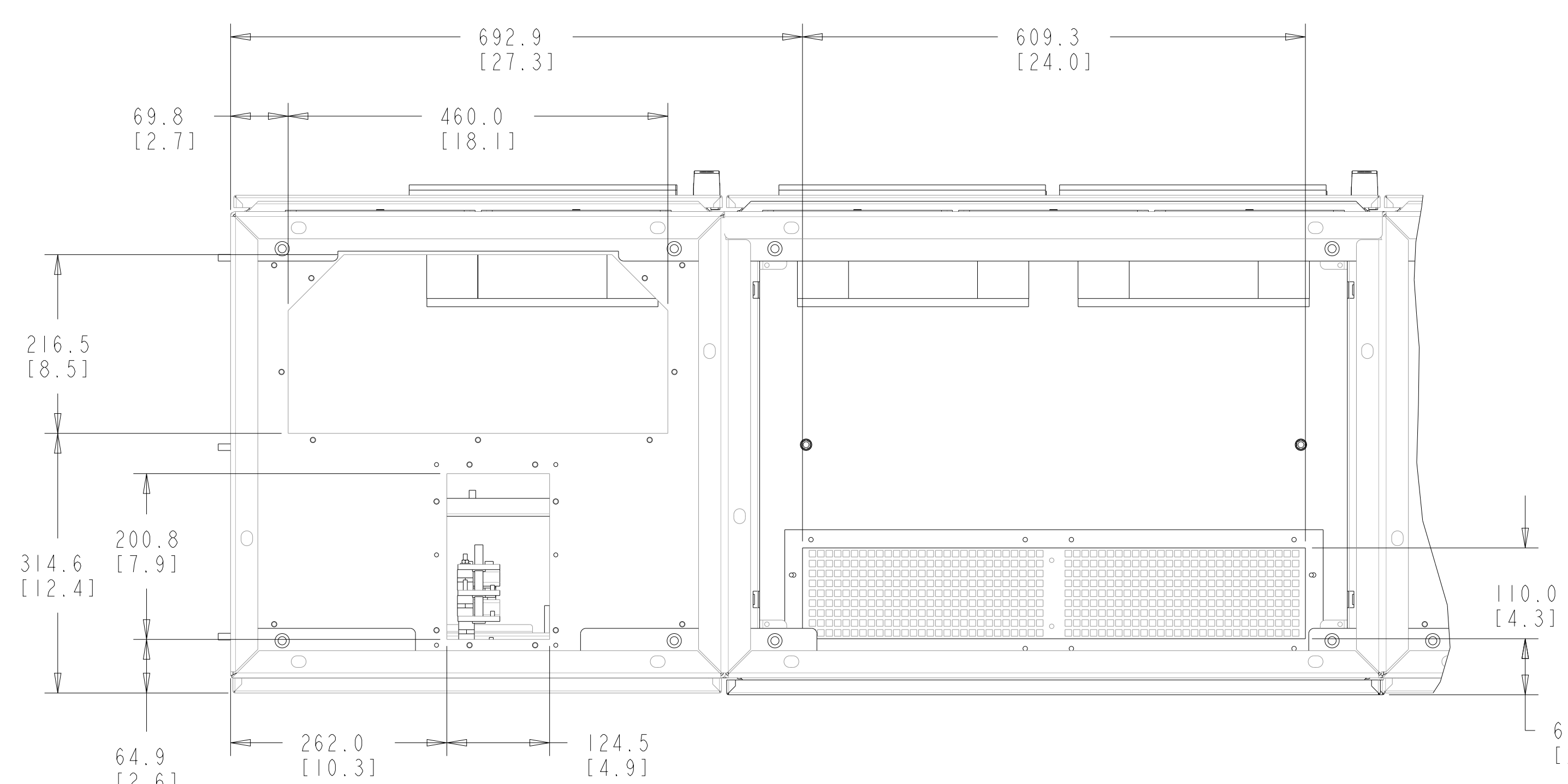
3

2

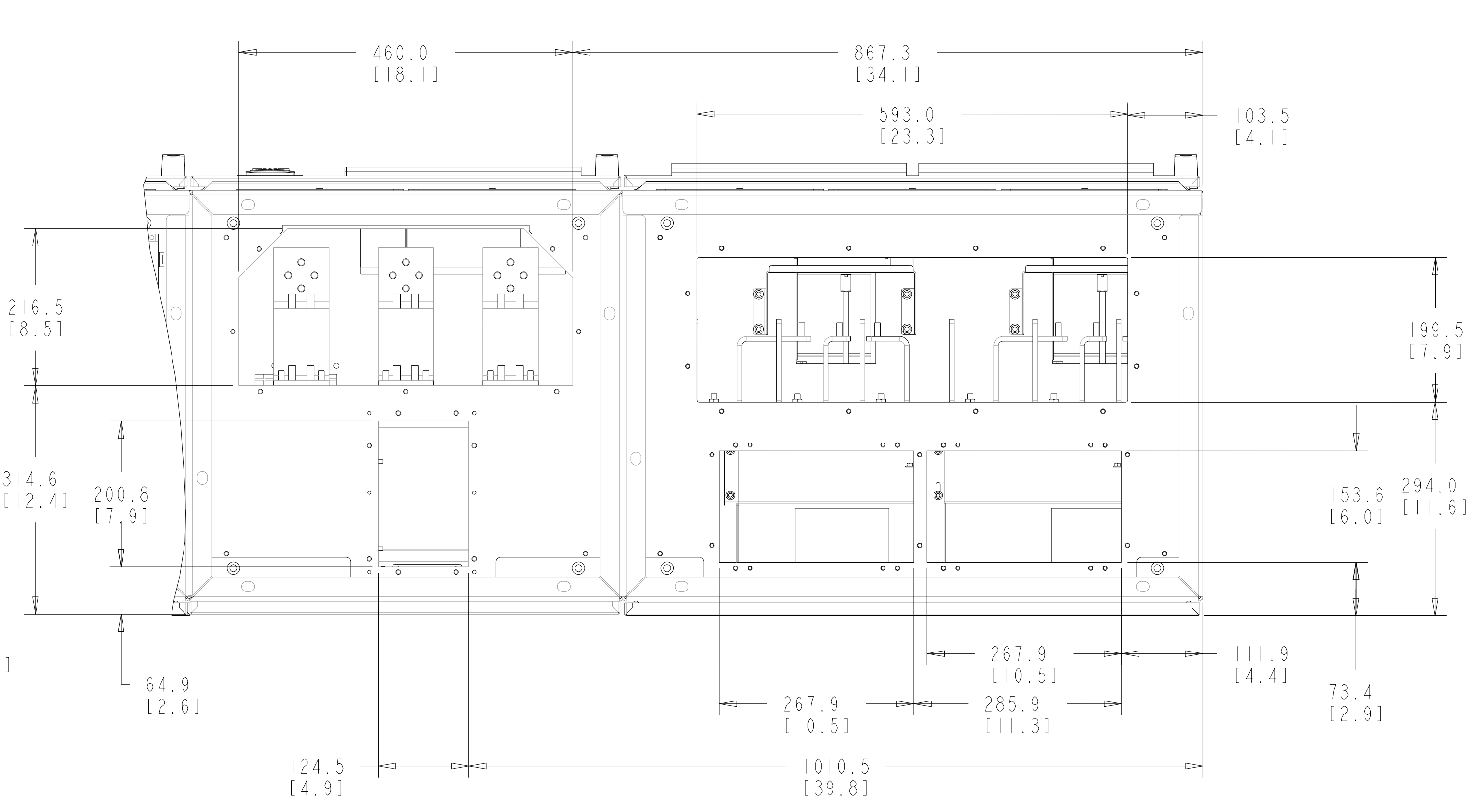
1



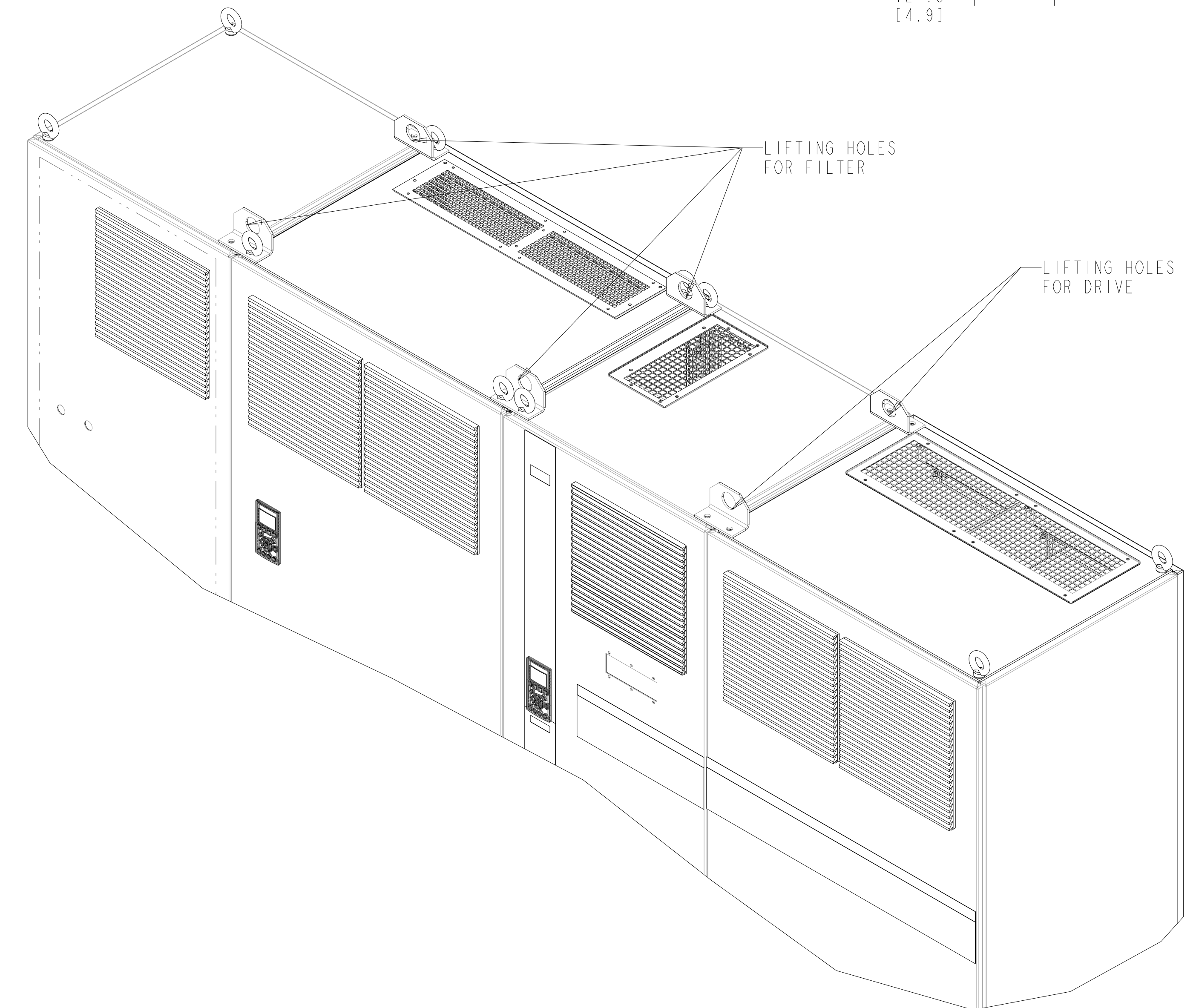
TITLE		
INST, MTG, SERIES 6, LHD330, F FRAME		
SIZE D	MODEL 177R0354	REV 004
SCALE 0.150	DRAWING NO. 177R0354	SHEET 3 OF 5



DETAIL A
SCALE 0.200



DETAIL B
SCALE 0.200



TITLE		
INST, MTG, SERIES 6, LHD330, F FRAME		
SIZE	MODEL	REV
D	177R0354	004
SCALE	DRAWING NO.	SHEET
0.150	177R0354	4 OF 5

8

7

6

5

4

3

2

1

FILTER CABINET DETAIL

D

D

C

C

B

B

A

A

OPTIONS CABINET
BUSBAR CONNECTIONS

RECTIFIER CABINET
BUSBAR CONNECTIONS

SEE NOTE 1

SEE NOTE 2

NOTES:

- 1. REFER TO 177R0036 FOR TERMINAL LOCATIONS
- 2. REFER TO 177R0035 FOR TERMINAL LOCATIONS

8

7

6

5

4

3

2

1

TITLE			
INST, MTG, SERIES 6, LHD330, F FRAME			
SIZE	MODEL	REV	
D	177R0354	004	
SCALE	DRAWING NO.	SHEET	
0.150	177R0354	5 OF 5	