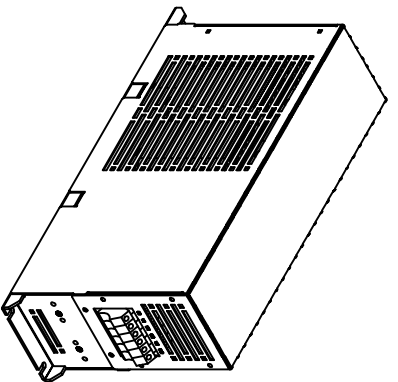
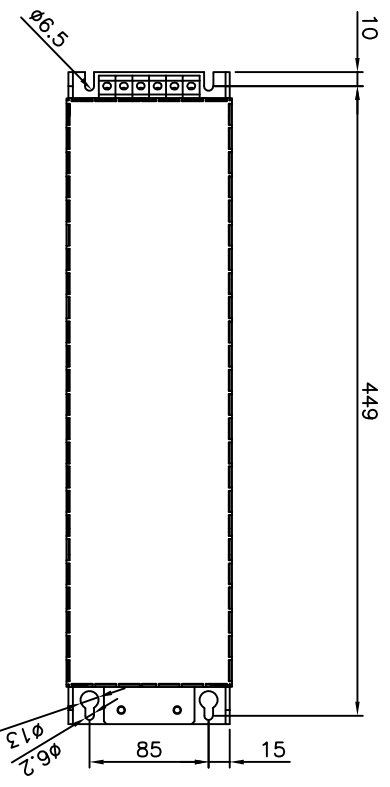
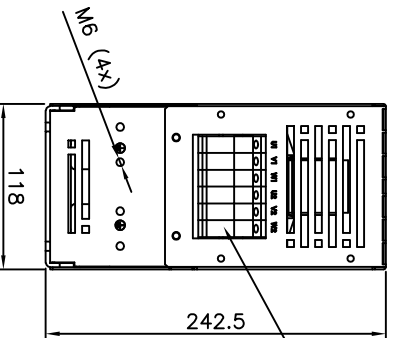
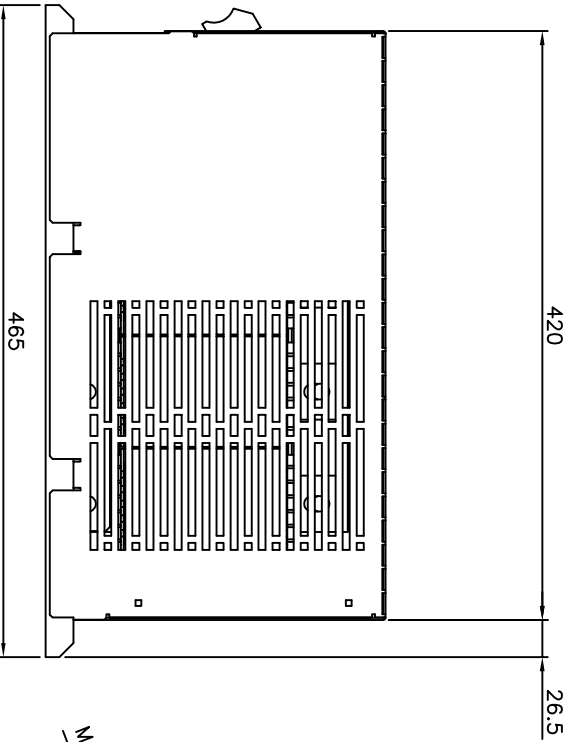


additional informations:  
 filter colour : RAL7001  
 filter weight : 21,3kg  
 cable clamp : 2x 195N3206



**VLT** MCC 101 sine wave FILTER  
 Danfoss A/S, 8430 Nordborg, Denmark  
 www.danfoss.com

TTC: MCC101A13K7E20B S/N: 00168-198  
 P/N: 130B3196  
 3x 325-680V - 50/60Hz (max 100Hz)  
 3x 13A @ 220V 12A @ 240V 10A @ 100Hz  
 Class: IP20 Temp: 45°C/1h  
 \*130B319600168-186\*

Use only with a Type 1 or Type 2 SPD overvoltage control device  
 E: 219622  
 hid:ContEa: HD1  
 UL: Unsurv00V

B 1002049-1 FA-Nr.: 0000000  
 See manual for UL-requirements

EM 61598 **CE**

MADE IN GERMANY  
 Lsg 719F  
 CPE-411F  
 P/N: 115W/  
 Weight: 21.3kg  
 Tightening torque terminal: 2.0-4.0Nm only CU

d|04.05.16 Schr./Fle. type|label updated, Danfoss Postaddress included

c|10.11.14 Schr./Fle. type|label updated

b|14.01.13 Schr./Kor. type|label updated

a|01.10.10 KOR/Lauer approval added

date	name	amendment
------	------	-----------

Dimensions toleranced according to ISO 2768-m						
Tolerance class	0.5 to 3	from 3 to 6	from 6 to 30	from 30 to 120	from 120 to 400	from 400 to 1000
m (middle)	±0.1	±0.1	±0.2	±0.3	±0.5	±0.8

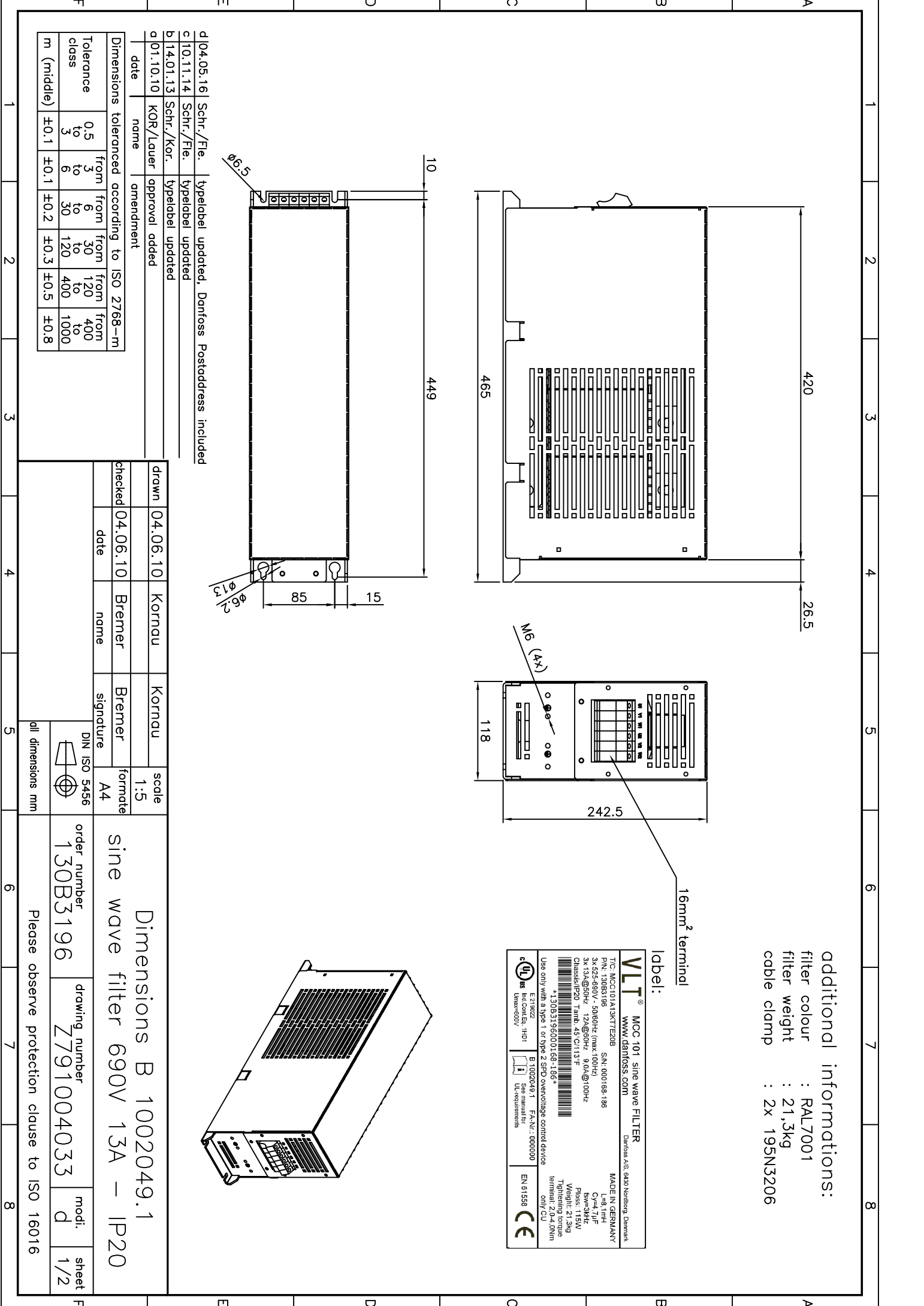
drawn	04.06.10	Kornrau	Kornrau	scale	1:5
checked	04.06.10	Bremer	Bremer	format	A4
	date	name	signature		

Dimensions B 1002049.1

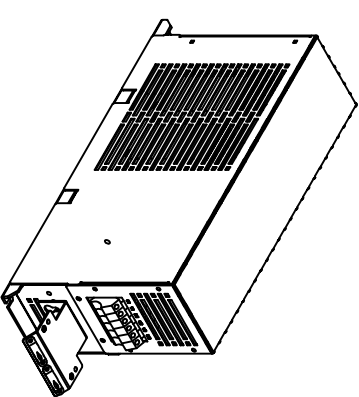
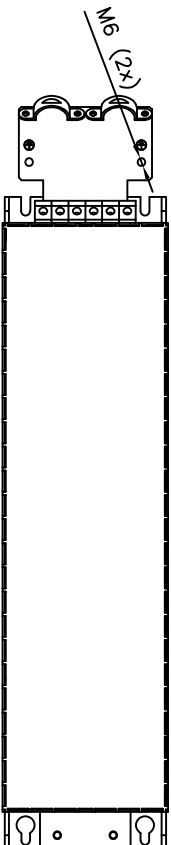
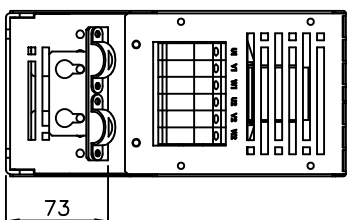
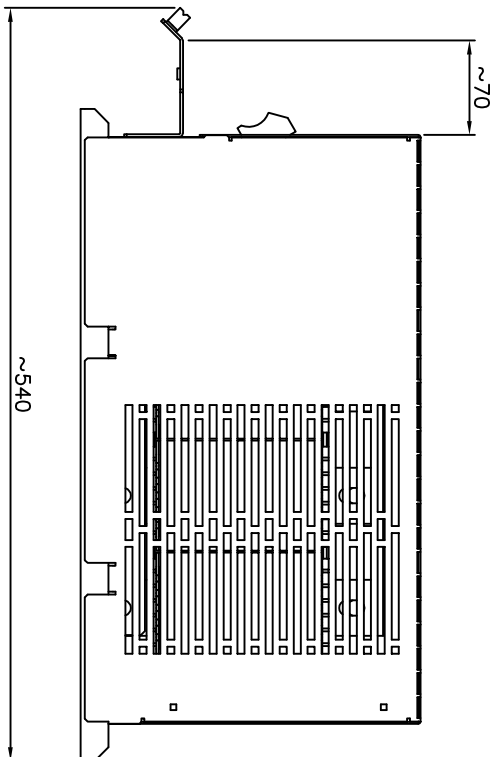
sine wave filter 690V 13A - IP20

order number 130B3196 drawing number Z791004033 mod. d sheet 1/2

Please observe protection clause to ISO 16016



included accessories  
(screen connection plate)




d|04.05.16| Schr./File. | typelabel updated, Darfoss Postaddress included  
 c|10.11.14| Schr./File. | typelabel updated  
 b|14.01.13| Schr./Kor. | typelabel updated  
 a|01.10.10| KOR/Lauer | approval added  
 date name amendment

Dimensions toleranced according to ISO 2768-m						
Tolerance class	0.5 to 3	3 to 6	6 to 30	30 to 120	120 to 400	400 to 1000
	±0.1	±0.1	±0.2	±0.3	±0.5	±0.8
m (middle)						

drawn	04.06.10	Kornrau	Kornrau	scale	1:5
checked	04.06.10	Bremer	Bremer	formate	A4
	date	name	signature		

Dimensions B 1002049.1  
sine wave filter 690V 13A – IP20

order number 130B3196 drawing number Z791004033 mod.: d sheet 2/2

DIN ISO 5456  
  
 all dimensions mm

Please observe protection clause to ISO 16016