

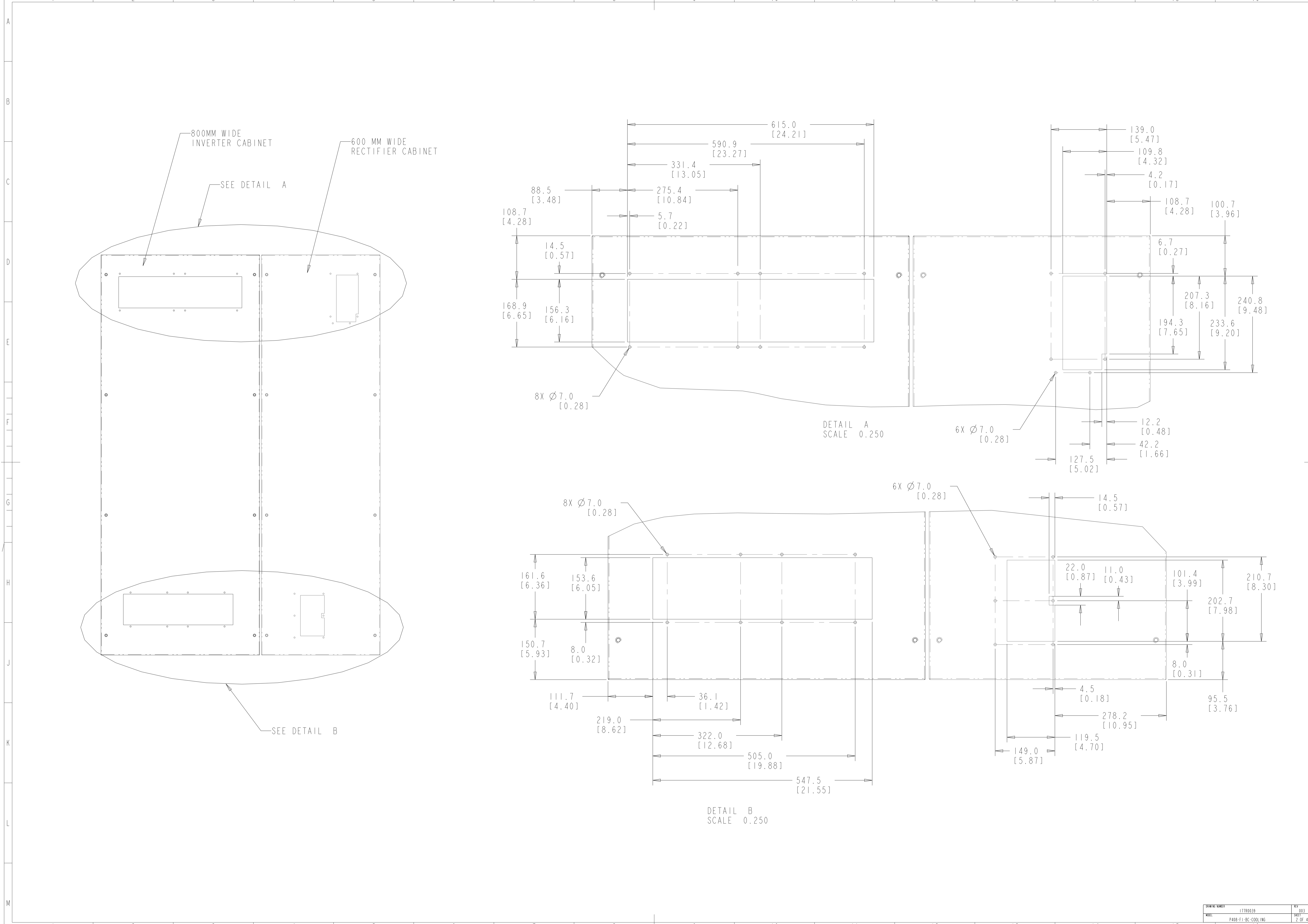
STEPS:

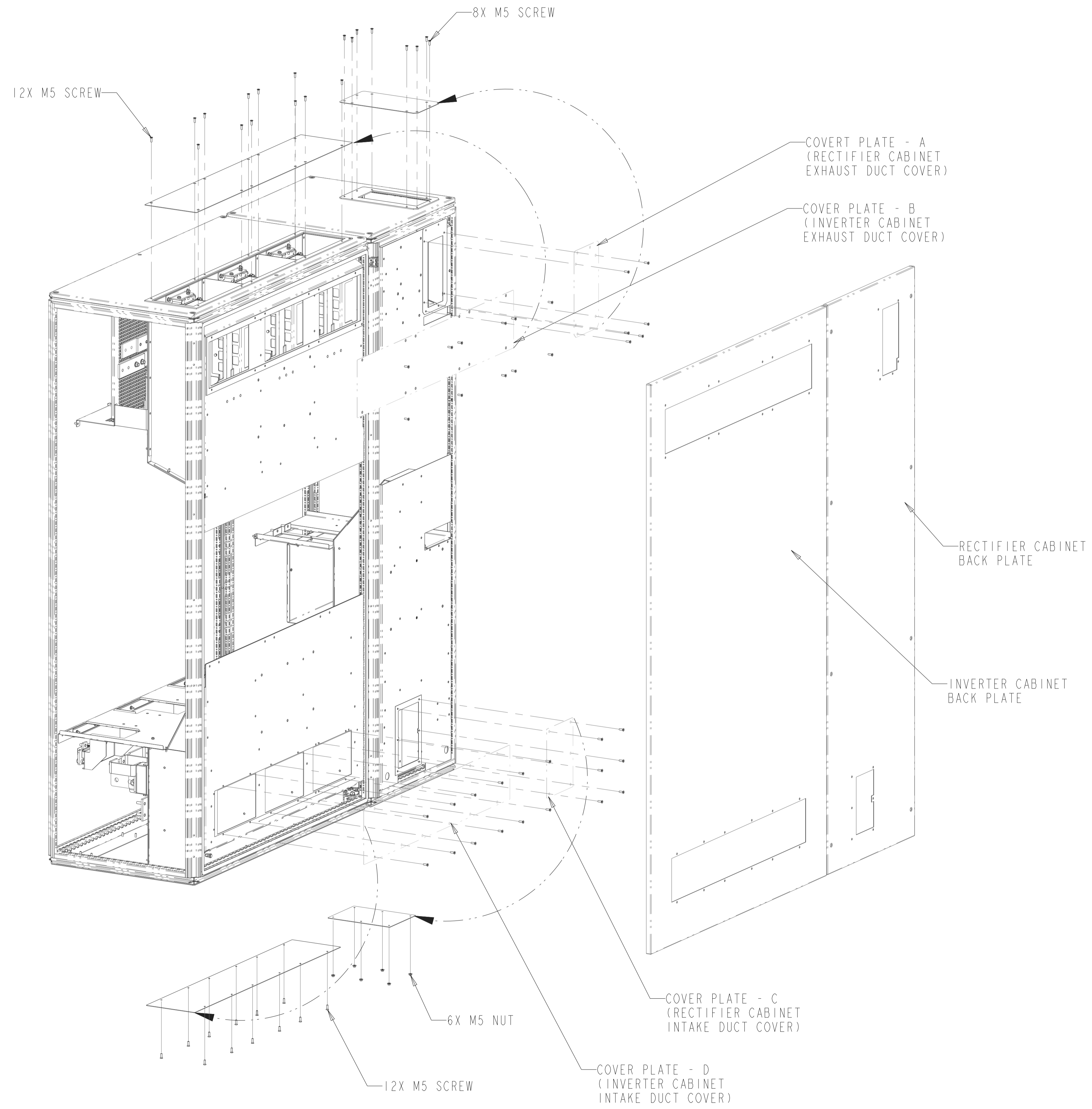
1. REMOVE BOTH CABINET BACK PLATE
2. REMOVE COVER PLATE A, B, C & D
3. INSTALLED COVER PLATE REMOVED IN STEP 2 TO BLOCK TOP AND BOTTOM OPENING USING THE SCREW REMOVED DURING STEP 2. GASKET REQUIRED ARE ALREADY PROVIDED ON BOTH TOP AND BOTTOM. (NOTE: TO MOUNT RECTIFIER BOTTOM PLATE 6X M5 NUT WOULD BE NEEDED)
4. MAKE CUTOUT ON CABINET BACKPLATE AS SHOWN ON SHEET 2.
5. RE-INSTALL BOTH BACK PLATE AND ATTACH DUCTS THROUGH HOLES CUT INTO BACKPLATE USING LONGER M5 SCREWS.

NOTES:  
 1. FOR FASTENER TORQUES, REFER TO 175R5600 CLASS A. UNLESS OTHERWISE SPECIFIED.

□ CRITICAL CHARACTERISTICS  
 ▽ KEY CHARACTERISTICS  
 ○ INSPECTION  
 MUST COMPLY TO ROHS DIRECTIVE 2011/65/EU

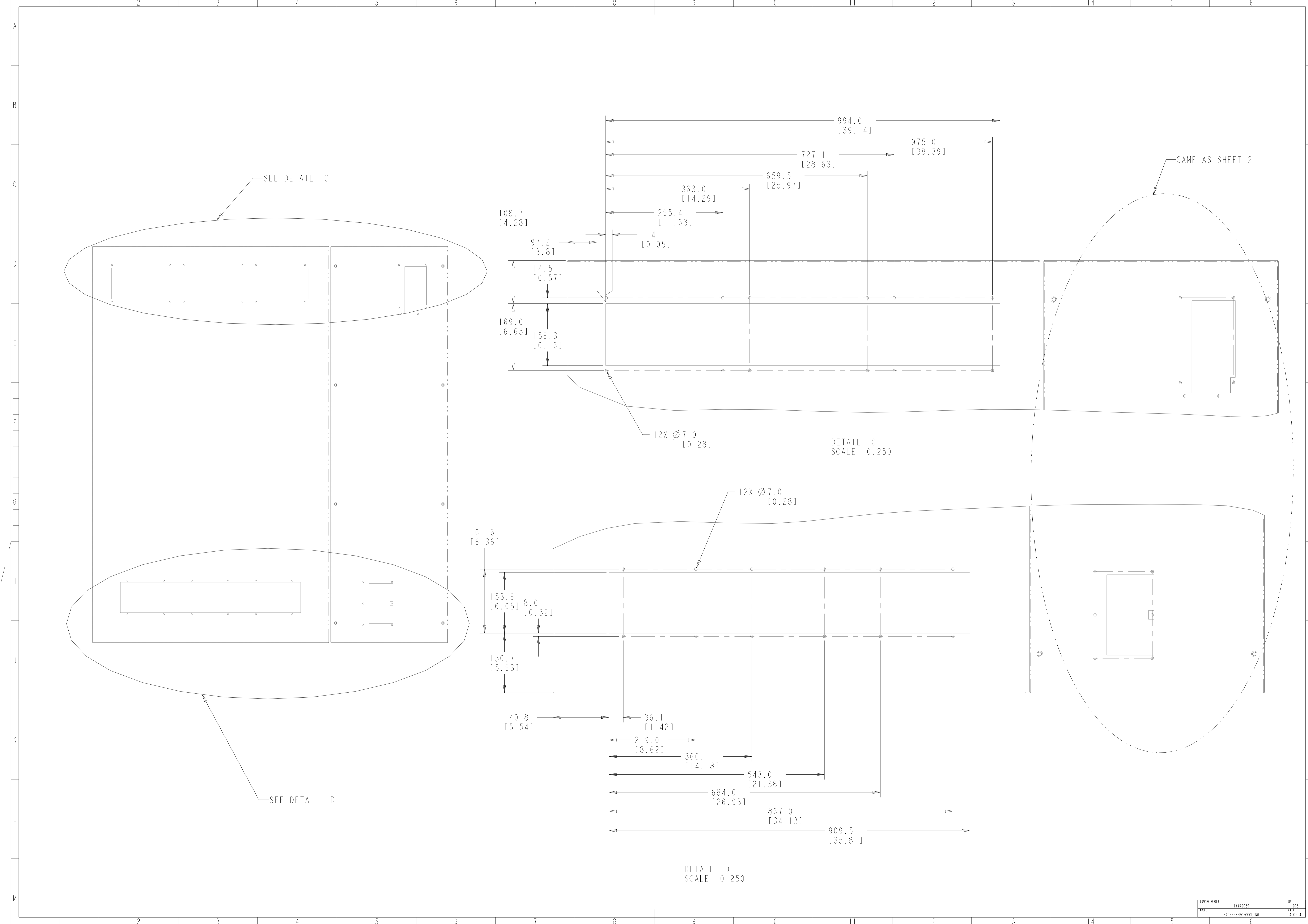
UNLESS OTHERWISE SPECIFIED INTERPRET DIM. & TOL. PER ASME Y14.5M-1994 ALL DIMENSIONS ARE IN MILLIMETERS ±0.1, 0.2, 0.5, 1.0			THIRD ANGLE PROJECTION	SCALE 0.125	SIZE A1	MATERIAL	
— PDM CONTROLLED DRAWING — NOT VALID WITHOUT FROZEN DATE IN ID STAMP				DESCRIPTION DW_REF_BACK_CHNL_COOLING_F1-F2			
CHANGED	DH	07/14/15					
DESIGNED	BK	08/09/07					
CHECKED							
CONFIDENTIAL: PROPERTY OF DANFOSS A/S NORDBORG, DENMARK. NOT TO BE HANDED OVER TO BE COPIED OR BE USED BY A THIRD PARTY. TWO OR THREE DIMENSIONAL REPRODUCTION OF CONTENTS TO BE AUTHORIZED BY DANFOSS A/S.						DRAWING NUMBER 177R0039	REV 003
						SHEET P408-F1-BC-COOLING	1 OF 4





STEPS:

1. REMOVE BOTH CABINET BACK PLATE
2. REMOVE COVER PLATE A,B,C & D
3. INSTALLED COVER PLATE REMOVED IN STEP 2 TO BLOCK TOP AND BOTTOM OPENING USING THE SCREW REMOVED DURING STEP 2. GASKET REQUIRED ARE ALREADY PROVIDED ON BOTH TOP AND BOTTOM. (NOTE: TO MOUNT RECTIFIER BOTTOM PLATE 6X M5 NUT WOULD BE NEEDED)
4. MAKE CUTOUT ON CABINET BACKPLATE AS SHOWN ON SHEET 4.
5. RE-INSTALL BOTH BACK PLATE AND ATTACH DUCTS THROUGH HOLES CUT INTO BACKPLATE USING LONGER M5 SCREWS.



SEE DETAIL C

SAME AS SHEET 2

SEE DETAIL D

