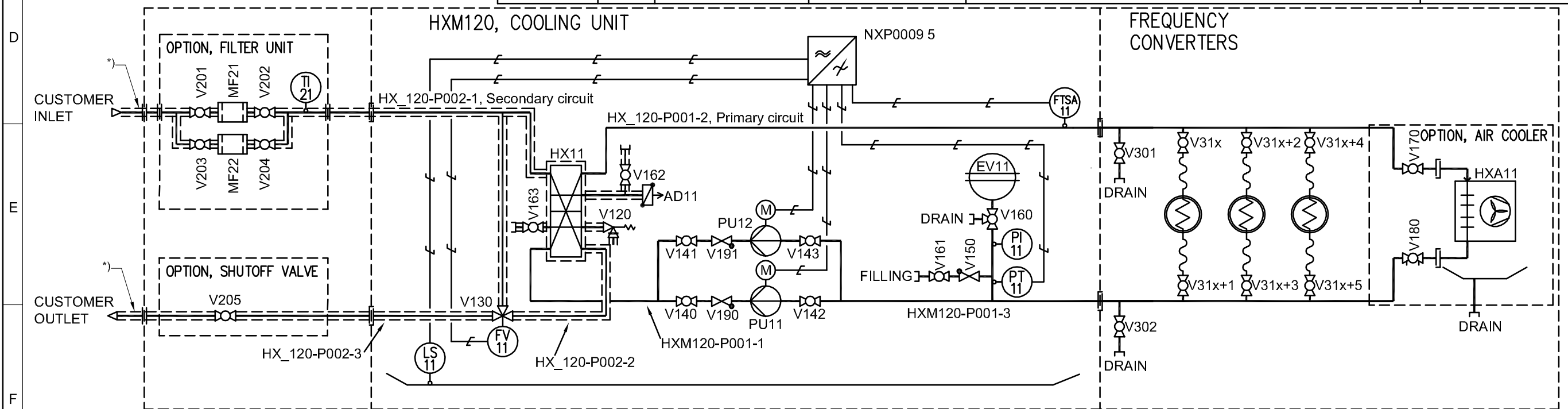


Code	Pcs.	Material	Note.	Name	Nominal pressure
PU11..12 **)	2	AISI304 / 316	Vacon delivery	Pump Ebara EB 3M 40-160/3, 3x400V /50 Hz, 3kW	PN10
HX11	1	AISI316 / Cu-brazed	Vacon delivery	Plate heatexchanger 2" / 1 1/2"	PN25
HXA11	1	Cu / Al	Vacon delivery (option)	Water/Air heatexchanger 3/4"	-
EV11	1	AISI304 / Butyl	Vacon delivery	Pressure vessel 3/4", pre-pressured to 100kPa, cap.8 litre Connection stainless steel, inside vessel epoxy coating, butyl diaphragm	PN10
MF21..22	2	-	Vacon delivery (option)	Y-Strainer	-
AD11	1	AISI304 / 316	Vacon delivery	Automatic de-airing unit 3/8"	PN16
FTSA11	1	AISI304 / 316	Vacon delivery	Flowswitch 1/2", with analog temperature outlet	PN60
PI11	1	AISI304 / 316	Vacon delivery	Pressure indicator 1/4", 0-10 bar	PN20
PT11	1	AISI304 / 316	Vacon delivery	Pressure transmitter 1/4", 0-10 bar	PN20
TI21	1	-	Vacon delivery (option)	Temperature indicator 1/2", 0-60°C	-
LS11	1	-	Vacon delivery	Leakage switch 24V AC/DC, 70mA	-
V120	1	AISI304 / 316	Vacon delivery	Safety valve 1/2", reliefpressure 6bar Body bronze, nozzle and disc stainless steel	PN25
V130	1	EN-JS1030, CW602N	Vacon delivery	Regulating valve DN32 + actuator (FV11)	PN16
V140..41	2	PVC-C	Vacon delivery	Ballvalve DN40	PN16
V142..43	2	PVC-C	Vacon delivery	Ballvalve DN50	PN16
V150	1	AISI304 / 316	Vacon delivery	Non-return valve 1/2"	PN40
V160	1	AISI304 / 316	Vacon delivery	Ballvalve 3-way 3/4", threaded	PN64
V161..63	3	AISI304 / 316	Vacon delivery	Ballvalve 1/2"	PN64
V170	1	AISI304 / 316	Vacon delivery (option)	Ballvalve 1/2"	-
V180	1	Brass	Vacon delivery (option)	Balancing valve 1/2"	-
V190..91	2	AISI304 / 316	Vacon delivery	Non-return valve DN40	PN16
V201..05	5	-	Vacon delivery (option)	Ballvalve	-
V301..02	2	AISI304 / 316	Projectspecific delivery	Ballvalve 1/2", threaded	-
V31x..	-	AISI304 / 316	Projectspecific delivery	Ballvalve 1/2", threaded	-
NXP0009 5	1	-	Vacon delivery	Frequency converter, NXP 0009 5A5H1 SSS A1A2B5B5C5	-

*) To be cold insulated, e.g. with polyethylene, if the temperature of the liquid in the secondary circuit is lower than the ambient temperature and the relative humidity is high.

**) Alternative pump:
Pump KL, 6.4A, 3x400V, 50Hz,
JP151, 3kW, PN10, motor turned
180°, Kolmeks, KL401602300



REV.	DATE	MADE	APPR	DESCRIPTION	REV.	DATE	MADE	APPR	DESCRIPTION
f	02.12.2008	A-M. Haka	U. Kähtävä	Pumps changed	c	09.09.2005	A-M. Haka	Y. Koivisto	Insulate added in secondary circuit
e	25.06.2007	A-M. Haka	J-P. Sampola	Nominal pressures added, P&ID only for PVC	b	25.05.2005	A-M. Haka	Y. Koivisto	Filter unit and shutoff valve added
d	11.10.2006	U. Kähtävä		FC and control signals added	a	12.05.2005	A-M. Haka	Y. Koivisto	Filter unit and shutoff valve deleted, HXA11 moved



Project **STD HX-unit**
Customer -
Doc. no.
Cust. ref.

Title
HXM120
PVC-C Piping
P&ID

Prepared **M.Forsén 25.10.2004**
Checked **K.Hofman 25.10.2004**
Approved **J-P.Sampola 25.10.2004**
Vacon Oyj

DCC &
Based on **VL39-5033-01**
Proj. no. - Doc. no. **VL39-5030-01**
Revision **f**

Object =
Loc. +
Sheet **1/1**
Cont.